

Weber BIM Downloads

Thank you for downloading from the Weber BIM Library. We hope that our models and products enhance your building projects.

You can choose to download one of our system models for our External Wall Insulation Systems;

- **webertherm XP** - Xpress System
- **webertherm XM** - Multi Layer System
- **webertherm XB** - Brick Slip System
- **webertherm FT** - Frame Tec System

As well as our render systems;

- **weberend MT** - Render System
- **weberpral M** - Moncouche Render
- **weberpral D** - Monocouche Render

You can also choose to download one of our materials libraries:

- Renders & Decorative Finishes
- Flooring Systems
- Tile Fixing

These libraries contain our expanding catalogue of Weber BIM materials, included with information specific to each product.

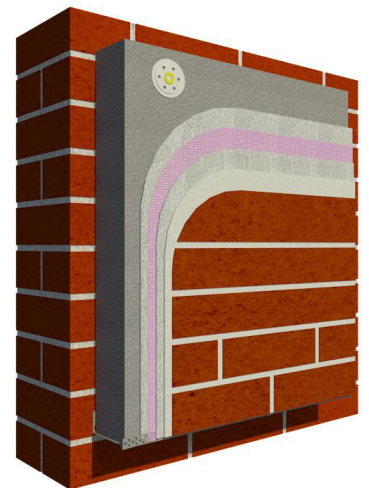
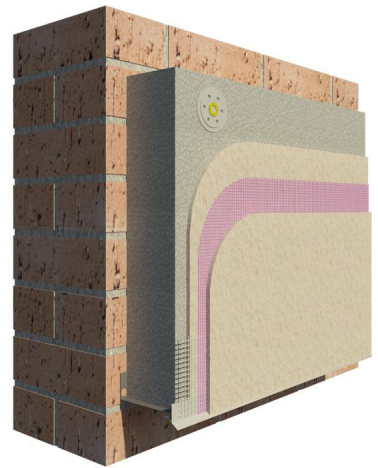
The Renders & Decorative Finishes download also includes a library of images for creating rendered views of the Weber products in your model.

Each model and material includes important information related to each product including recommended thicknesses, density, packaging, coverage etc.

Weber also offers a service to import our BIM objects into your Revit model. Please contact specifications@netweber.co.uk for further information.

Please tell us about your experience downloading from the Weber BIM library and if you have any suggestions for improvement. Please email us at specifications@netweber.co.uk

Many Thanks
The Specifications Team at Weber



Transfer BIM Objects

(1)

When you open your downloaded Weber BIM file it will look similar to image (1).

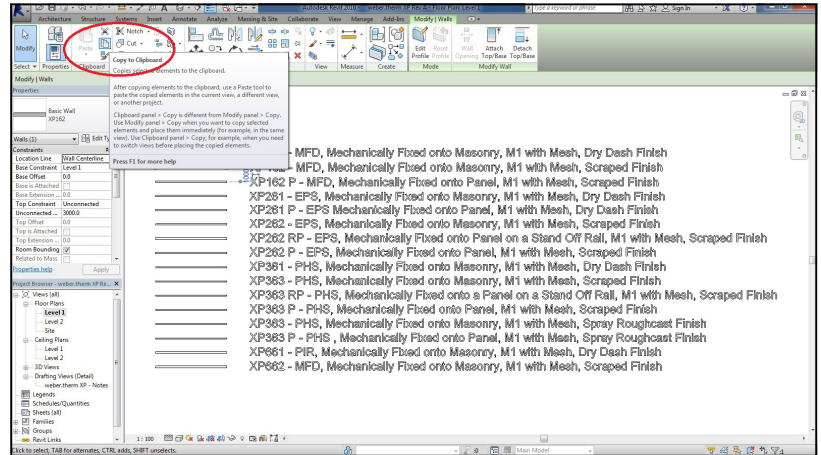
Each file has the most popular build-ups of your chosen system. If what you require is not available, please get in touch.

To transfer one of our models into your project file, firstly select your required product(s).

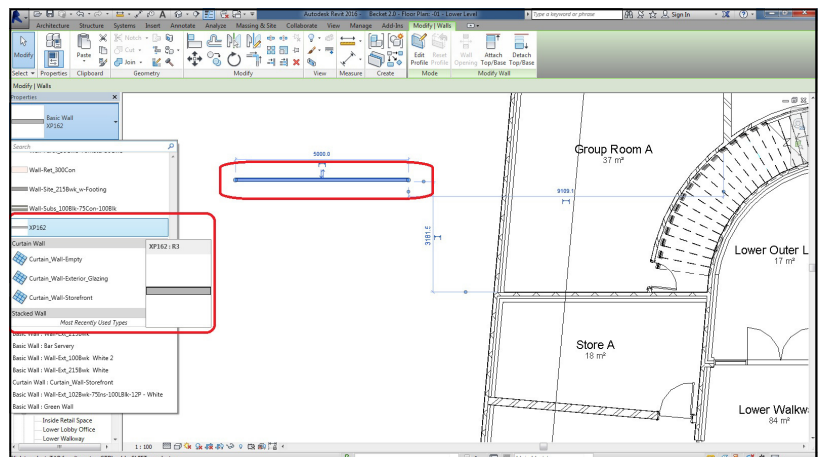
While the system is highlighted, under the **Clipboard** tab select **Copy to Clipboard**.

Next, open your project file, under the **Clipboard** tab, select **Paste**.

The Weber model will now be incorporated into your project as a system family, and available to use at any time in the project.



(2)



Install Image Files

All Weber Renders and Decorative Finishes include accurate images of each product, to create high quality rendered images of your project.

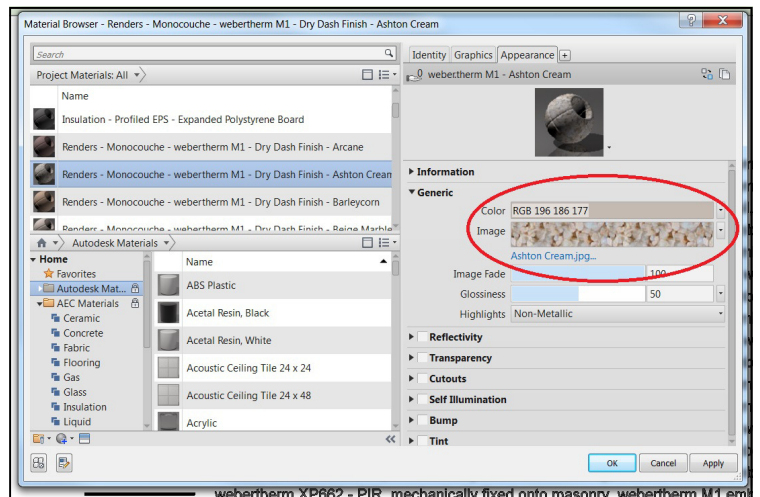
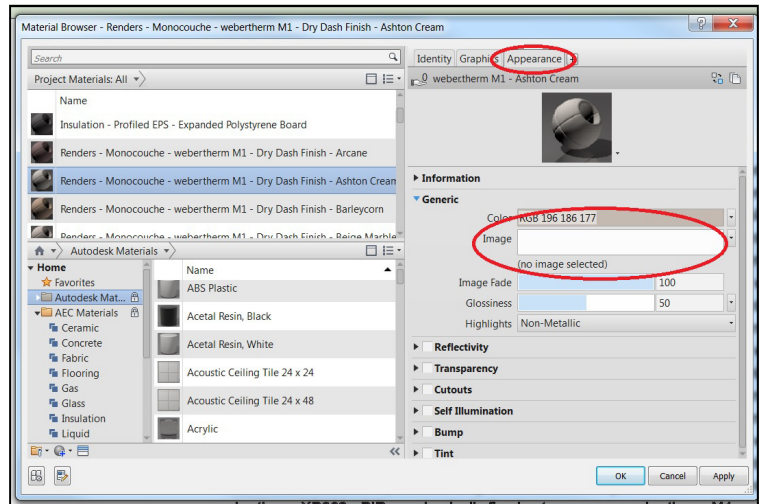
However you may need to link the images to the material when you first download it.

Firstly ensure you have downloaded the **Renders & Decorative Finishes** file from the **Technical Drawings** Page on our website. Save it somewhere you'll be able to find easily.

Select your desired material, under the **Appearance** Tab, look under the **Generic** Dropdown and there should be either a blank box or a red box next to **Image**.

Simply **select the text** below the Image box and look for the corresponding image which can be found in the **Materials and Colours** folder within your **Renders & Decorative Finishes Download**.

Once you have installed one image, all other materials will link together. If you move the Materials and Colours file, you will have to repeat this process.



Install Fill Patterns

Most Weber BIM materials include personalised fill patterns to provide an increased level of detail and realism to your model.

However you may need to link the patterns to the material when you first download it.

To insert fill patterns for finishes, from the **Manage** tab in, select **Additional Settings** and **Fill Patterns**.

Then select the **Pattern Type** (Drafting or Model) and choose **New**. Please see the table below to know which finishes require Drafting or Model.

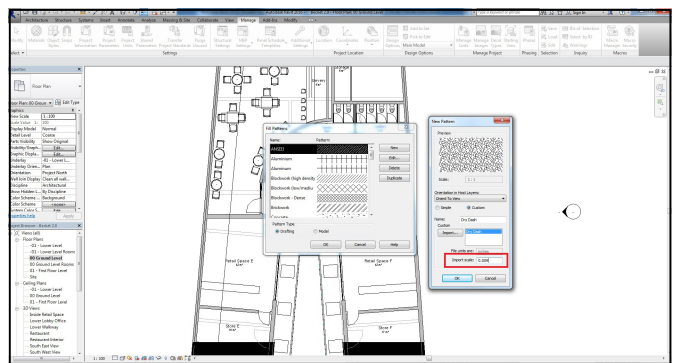
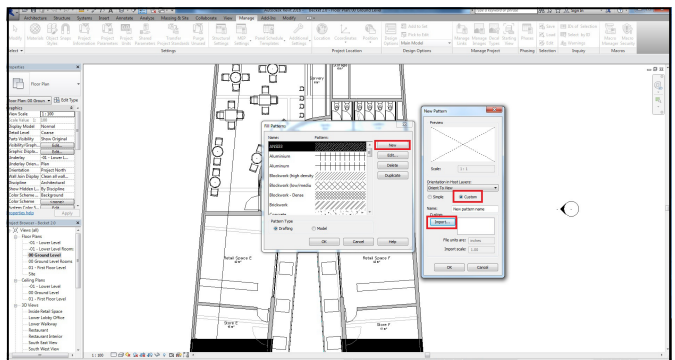
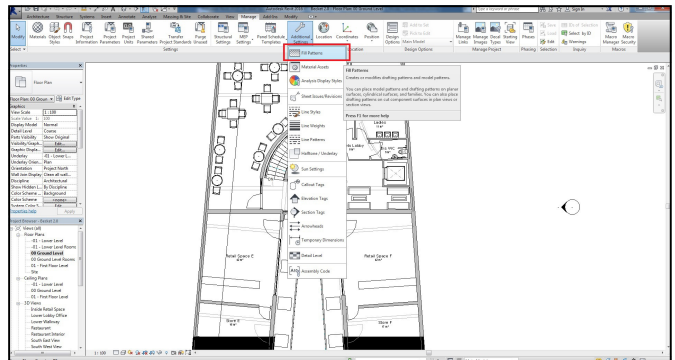
Select **Custom**, then **Import**.

Next select the required fill pattern from the **Colours and Finishes** folder found within your download, use the corresponding **Scale** stated in the table below.

Select **OK**

Please ensure you input the correct scale for each pattern.

You can assign the pattern to a material in the Material Editor and selecting the appropriate surface pattern.



Fill Pattern	Drafting or Model	Scale (inches)
Synthetic Finish	Drafting	0.5
Spray Roughcast	Drafting	0.03
Scraped	Drafting	0.09
Dry Dash	Drafting	0.009
Render Brick	Model	0.04
Brick Slip	Model	0.04

Note

All models have been created to accurately portray Weber products, any unauthorised changes made to the models, without speaking to a Weber representative will no longer accurately represent Weber Products therefore will not be recognised as a Weber product. Please contact a Weber representative for any advice on any of our products.

All information input to the materials was accurate at the time of creation, however for more accurate U-value calculations and a Condensation Risk Analysis please contact a Weber representative.

Please be aware that all colours and materials have been created to be as closely representative of the actual colour as possible, however there may be variations. It is advised that any colour choices are made against a physical sample, requested from Saint-Gobain Weber.