



weberpral Monocouche Render

Materials in this guide:
weberpral
weberend aid
weber CL150
weber standard mesh cloth
weber accélérateur monocouche
weberend bead adhesive

Client:

Applicator:

Project:

This Application Guide should be read entirely, as it contains important information on the installation and application, of the Concrete Repair products listed. It includes information on the desirable weather conditions for application, storage, protection and curing advice for the system.

Please note it is the responsibility of the installing contractor to form the project specific Method Statement that defines the appropriate Schedule of Works to reflect the project criteria.

If any operations do not seem applicable, or if a required operation is not included, clarification should be sort from the Design Engineers or Weber.



weberpral Monocouche Render Application Guide

| | |
|---|---------------------|
| 1.0 GENERAL | Page 4 |
| 1.1 Material handling for weberpral pre-bagged cementitious products | |
| 1.2 Storage | |
| 1.3 Water regulation | |
| 1.4 Weather constraints | |
| 2.0 SUBSTRATES | Page 5 |
| 2.1 Ultra lightweight masonry concrete block | |
| 2.2 Medium masonry concrete block | |
| 2.3 Low density Aircrete | |
| 2.4 Normal density Aircrete | |
| 3.0 CRACK CONTROL FOR CONSTRUCTION | Page 6 |
| 3.1 General | |
| 3.2 Movement joints | |
| 3.3 Bed joint reinforcement | |
| 4.0 CONSTRUCTION ISSUES | Page 7 |
| 4.1 Alignment of background | |
| 4.2 Curing of construction | |
| 4.3 Cleanliness of substrate | |
| 4.4 Moisture content of substrate | |
| 4.5 Protection of construction | |
| 4.6 Building fittings | |
| 4.7 Scaffolding | |
| 5.0 ARCHITECTURAL DETAILING | Page 8 - 10 |
| 5.1 General | |
| 5.2 Thickness of render | |
| 5.3 Forming features and stops | |
| 5.4 Horizontal stops and drips | |
| 5.5 Arrises | |
| 5.6 Movement joints | |
| 5.7 Vertical stops | |
| 5.8 Fixing profile beads | |
| 5.9 Panel sizes | |
| 6.0 PREPARATION | Page 11 - 12 |
| 6.1 Suction control | |
| 6.2 Key coat | |
| 6.3 Mesh cloth reinforcement to weberpral | |
| 7.0 SITE ORGANISATION & APPLICATION OF weberpral | Page 13 - 15 |
| 7.1 Setting up the prepared substrate | |
| 7.2 Mixing weberpral materials | |
| 7.3 Application of wet materials | |
| 7.4 Ruling off / levelling renders | |
| 7.5 Scraped finish | |
| 7.6 Sprayed roughcast texture | |
| 7.7 Ashlar details (scraped finished) | |
| TYPICAL DETAILS | Page 16 - 37 |
| AFTERCARE & MAINTENANCE | Page 38 - 39 |



Application Guide

| | | |
|-----|--|--------------|
| 1.0 | GENERAL | Page 4 |
| 2.0 | SUBSTRATES | Page 5 |
| 3.0 | CRACK CONTROL FOR CONSTRUCTION | Page 6 |
| 4.0 | CONSTRUCTION ISSUES | Page 7 |
| 5.0 | ARCHITECTURAL DETAILING | Page 8 - 10 |
| 6.0 | PREPARATION | Page 11 - 12 |
| 7.0 | SITE ORGANISATION & APPLICATION OF weberpral | Page 13 - 15 |

1.0 GENERAL

1.1 MATERIAL HANDLING FOR **weberpral** PRE-BAGGED CEMENTITIOUS PRODUCTS

weberpral cementitious products are made to Weber formulations using ingredients of their approval. Consideration shall be given to the health and safety guidance with regard to cementitious materials. Material safety datasheet are available on request from Weber Additives must not be added without specific approval as it will invalidate any guarantee with regard to the **weberpral** material. **weberpral** cementitious products are available as factory batched, dry bagged mortar mixes, ready for use simply by adding water.

1.2 STORAGE

Dry bagged factory batched products must be stored off the ground and protected from the weather. All contain cement and are therefore made useless if affected by dampness. Manufacturers use stretch wrap on pallets of material to provide stability during transportation. It should not be relied upon to protect materials against wet weather.

The material required for complete and adjoining panels should all be from the same batch number or be thoroughly dry mixed together before use.

Stored under proper conditions, dry-bagged **weberpral** products have a shelf life of 12 months.

1.3 WATER REGULATION

Any water used for mixing of renders should be clean and free from contaminants. (i.e. potable). The water supply must be freely accessible throughout the project. Note that when applying by pump some machines require connection to a dedicated, uninterrupted supply. Failure in that supply will stop application.

1.4 WEATHER CONSTRAINTS

COLD

- Don't work with frosted materials or on frosted substrates.
- Don't use cementitious materials unless temperature is 5° Centigrade and rising.
- In cold weather, if frost is forecast, stop work in time to allow the material to set sufficiently to prevent frost damage. The drying conditions will vary according to wind, temperature and humidity and may take several hours.
- In frosty weather where minimum temperature conditions cannot be met work can only proceed when suitable protection is provided and the temperature raised.

HOT

- In extremes of hot weather avoid working on elevations subject to direct sunlight or walls, which will become sunny during the application. Apply material preferably after direct sunlight has passed elevation/panel.
- Too rapid dehydration will cause a cementitious material to fail. When rendering use water spray to damp-down walls thoroughly prior to application to control suction, and shade from direct sunlight.

WET

- Don't work during rainfall or if rainfall is anticipated during initial set unless full protection is provided.
- Don't allow rain to strike newly applied material, particularly if strong colours have been chosen for rendering.
- Don't render on saturated backgrounds as this can impair bond strength and cause unsightly lime bloom to occur.
- The sorptivity (suction property) of the background is critical and if there is doubt as to the amount of water in the substrate, sample panels should be carried out on trial areas to determine the effect on the render.
- Backgrounds containing an excessive amount of water are more likely to give problems where work has been stopped for a period due to inclement weather.

2.0 SUBSTRATES

All substrates should be clean, suitably dry, sound and free from anything that may interfere with the adhesion, such as oil, grease, organic matters and soluble salts.

The substrate, including joints, must be of equal strength or stronger than the render and should be able to adequately support and restrain it.

Good adhesion of a render is dependent on good porosity of the substrate. If the suction is too high the render will not hydrate sufficiently. If it is too little there will not be a good bond.



Blocks that are fair faced or paint grade should always cause concern due to their smooth face. To ensure a good bond the substrate should have an open texture or utilize a key coat **weberend aid**

Blocks are the equivalent in surface area to six bricks, raking the joints is not an option to provide key for render.

Note: We are aware that some blockwork is progressively being formulated with varying quantities of recycled materials. These recycled materials can dramatically affect the water absorbency of the block with extreme examples absorbing twice the water volume over a short period. For this reason it is imperative that due care is taken to protect blockwork from the weather in both storage and construction. These blocks often appear similar in appearance to standard masonry. It is therefore essential, prior to rendering, that a suction assessment should be undertaken to ascertain the level of absorbency within the blockwork. Should the level of absorbency be deemed as high, action will be required. In normal circumstances careful controlled dampening with water may suffice, however in more extreme cases an application of **weberend aid** would be needed. If in doubt please contact Weber Technical Services on 08703 330070

2.1 ULTRA LIGHTWEIGHT MASONRY CONCRETE BLOCK

Up to 950kg/m³ with a compressive strength of 3.6 - 7.3N/mm² greater emphasis is on the design and management of movement. However from an application perspective suction control will be required by lightly spraying with a fine mist of clean water evenly before the render is applied. Saturation should be avoided as this will cause excessive shrinkage.

2.2 MEDIUM MASONRY CONCRETE BLOCK

1350 to 1450kg/m³ with a compressive strength of 3.6 - 7.3N/mm² Suitable to receive a direct application of render.



2.3 LOW DENSITY AIRCRETE

480kg/m³ with a compressive strength 2.9 - 3.6N/mm² not suitable for **weberpral** rendering

2.4 NORMAL DENSITY AIRCRETE

530 - 810kg/m³ with a compressive strength of 3.6 - 9.0N/mm² suction control will be required by lightly spraying with a fine mist of clean water evenly before the render is applied. Saturation should be avoided as this will cause excessive shrinkage and will prohibit bond in this instance.

3.0 CRACK CONTROL FOR CONSTRUCTION

3.1 GENERAL

weberpral materials are manufactured from carefully selected and graded aggregates to minimise drying shrinkage of the applied render. Providing that good practice, appropriate design and suitable preparation is undertaken, the rendering will be fully bonded to the substrate and restrained from movement by that surface and will not crack. It is therefore most important that stress/crack control be considered prior to construction in order to reduce the likelihood of cracking.

When the construction is correctly divided into appropriate panels separated by suitable movement joints, the stresses caused by drying shrinkage and normal building movement will dissipate to the detailed relief joints. Movement joints are not a requirement in the render alone as this is fully bonded to the substrate. They should however, reflect and follow through from the relief joints detailed in the construction.

3.2 MOVEMENT JOINTS

The use and placement of movement joints is essential to avoid cracking. Guidance on the placement of movement joints should be obtained from the specified block manufacturer. This advice should be used in conjunction with BS EN 1996(EC6) Code of practice for design of masonry, BS 6093:2006 + A1:2013. Code of practice for design of joints and jointing in building construction and the Concrete Block Association's guide to movement control. The main areas to include movement joints are as follows, however this will vary depending on the type of block and construction type:

- Changes in the wall height or thickness
- Changes of loading
- Abutments of walls and junctions with dissimilar materials
- Zones that are 1 to 3 metres from corners
- Up to every 6 metres for unreinforced blockwork
- To break up masonry panel so they do not exceed a length: height ratio of 3:1

The adequate use of movement joints will help reduce stress build up in the substrate and thus reduce the risk of cracking. Movement joints must also be followed through the render.

3.2 BED JOINT REINFORCEMENT

Mortar bed reinforcement can be used to reduce the frequency of movement joints as well as improving the lateral stability of the wall. However, mortar bed reinforcement is not a substitute for using movement joints. The examples below show how movement joint frequency can be reduced when using mortar bed reinforcement:

- If a movement joint is planned for every 9 metres, mortar bed reinforcement will be needed every other bed joint i.e. 450mm for the entire 9 metre length.
- If a movement joint is planned for every 12 metres, mortar bed reinforcement will be needed every bed joint i.e. 225mm for the entire 12 metre length. Where there are slender panels or panels with large openings, extra mortar bed reinforcement should be considered.
- Include mortar bed reinforcement in the two courses above and below openings such as windows to dissipate the extra stresses created around these typical weak zones.



4.0 CONSTRUCTION ISSUES

4.1 ALIGNMENT OF BACKGROUND

The background construction should be sufficiently true, in line and plumb to accommodate the product specified and its constraints. The render alone should not be used to correct gross irregularities. As a guide, the maximum that can be achieved is a correction of a deviation of 5mm underneath a 2m straight edge placed anywhere on the surface of the substrate.

4.2 CURING OF CONSTRUCTION

It is important that a freshly constructed substrate be allowed to cure properly before the application of any render materials. If the substrate is not fully cured, creep and shrinkage of the background can occur. This could result in the formation of cracks in the substrate, which will more than likely be reflected through into the render material. It is recommended that the substrate be allowed to cure for a minimum of 28 days before the application of render.

4.3 CLEANLINESS OF SUBSTRATE

Substrates to receive render must be clean, sound and dry. The construction must be free from oil contamination, dust, fungal growth, crystallised salts and any other factors that may impair the adhesion of the applied system or form a weak intermediate layer. Fungal or algae growth can be removed using a wash of **weber CL150**.

4.4 MOISTURE CONTENT OF SUBSTRATE

Temporary protection should be in place to prevent saturation of the building components during storage and construction, heightened levels of moisture will intern increase drying shrinkage of the construction. Temporary down pipes should direct water away from the wall throughout the project. Saturation of the substrate can mobilise any salts that it contains and allow them to pass to the face of the background. It will also encourage algae/fungal growth. Both of the above will have an adverse effect on the bond between the substrate and the render. In addition, saturation of the substrate will prolong the drying and curing of the applied render increasing the likelihood of limebloom (efflorescence) on the finished elevation and allow adverse environmental effects such as freeze/thaw to take place.

4.5 PROTECTION OF CONSTRUCTION

A building fabric exposed to rain and allowed to become saturated will be subject to a greater amount of movement due to drying shrinkage than one that is protected from the elements. This will put additional strain on the building envelope increasing the risk of cracking within the substrate, which will inevitably be reflected in the applied render.

Protecting elevations during the construction programme has the additional benefit of helping to enable application to continue during inclement or cold weather.

4.6 BUILDING FITTINGS

Before rendering is started on an elevation, all the major building components must be fitted. This includes copings, cappings and flashings, windows and doors, soffits and fascias etc. The fittings must be detailed to protect the finished render from staining due to localised water run off. Flue pipes, air bricks and weep holes should also be in final position prior to the application of render to remove the need to breakout and repair finished render after their installation. Repairs in finished render often result in differences of appearance compared to main wall areas and are often visible on completion.

4.7 SCAFFOLDING

Scaffolding should be tied independently to avoid the necessity for render repairs after completion where the scaffold has been tied to the wall. It should be erected with the physical process of render application in mind. Full access should be available between scaffold and the wall to enable a continuous wet edge of material to be maintained across the complete bay/elevation. Both standards and ledgers should be spaced sufficiently away from the wall to allow applicators to handle straight edges or pumping equipment without obstruction.

Specifically In the case of Roughcasting texturing process it is imperative that sufficient distance is allowed to form the finish. The distance between the boards and walling typically needs to be 220mm.

Note: With the above in mind, current HSE guidance regarding scaffold safety should always be followed. Scaffold should only be erected or modified by certified scaffolding personnel.

5.0 ARCHITECTURAL DETAILING

5.1 GENERAL

With regard to detailing, there are two main considerations. The vulnerable part of any render is the vertical bond to the wall. Isolated run-offs of water from sills, weep hole details and the like are likely to lead to staining over a period of time especially in areas where the atmospheric conditions are polluted. All detailing therefore has to protect the vertical bond interface and throw water away from the wall.

Careful design is required at the base of walls to prevent the rendering bridging the damp proof course (DPC). A bell cast feature will assist in the shedding of water and providing a drip. The DPC should never be bridged, as doing so will allow water to track up behind the render face. In addition to the DPC detail, consideration should be given to the use of a French drain at the base of the wall to prevent splash back staining the completed render and promoting fungal/algae growth. A minimum of 150mm should be allowed between the base of the render and ground level.

5.2 THICKNESS OF RENDER

Exposure of buildings are calculated with the following method defined in cycles of wet and drying conditions called spells and measured in litres/m²/spell. As part of the process, consideration should be given to location, orientation and surrounding environment, such as exposure to the force of wind and rain combined with protection from overhangs or surrounding buildings. Categories of exposure are defined into...

1. Sheltered
2. Moderate
3. Severe
4. Very Severe

For sheltered to moderate exposure it is recommended that the minimum finished render thickness is 15mm, for severe elevations then a 20mm thickness is in order. Acceptable tolerances are plus or minus 2mm, so this should be reflected in the nominal applied thickness. The minimum thickness should be achieved at the lowest point to provide the correct level of weather protection. This should be accounted for in any design relative to Ashlar Cutting. The maximum finished thickness for **weberpral** materials should not exceed 25mm unless forming feature bands, keystones or quoins.

5.3 FORMING FEATURES & STOPS

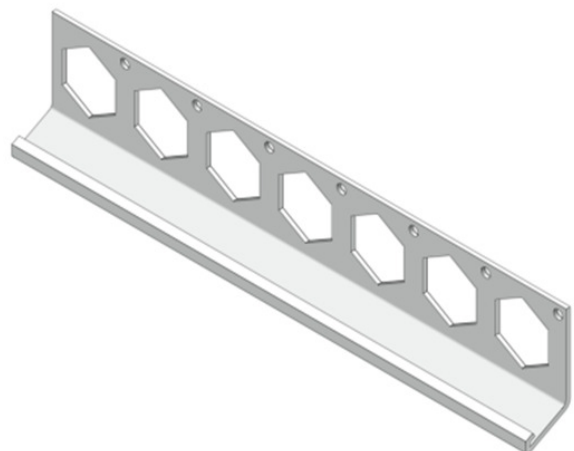
It is a necessity to form render features with the minimum required finished thickness of render specified relevant to the exposure of the façade. The temporary rule or bead is used to set the intended render thickness and thus work as a guide and former to the operatives.

5.4 HORIZONTAL STOPS & DRIPS

It has become progressively more common to maintain render alignment in a single plain and thus so not to form features where the render bells or sweeps away at points where the render terminates such as above openings or at the damp proof course height.

From a Weber perspective we would not foresee this to be an issue particularly if the building is located in a sheltered to moderate exposure. Thus so not in category of wind driven rain classified as severe or very severe this issue has less significance. It is also worth noting that although it is technically feasible to create a bell / sweep with scraped finished renders in reality it is practically difficult to maintain a consistency of the detail across a run of an elevation, particularly relevant on a continuous run across an elevation such as DPC line.

For horizontal stops it is imperative that a profile bead forms a drip (not a stop at a 90 degree angle).

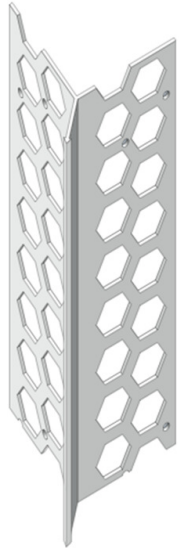


cont..../

5.0 ARCHITECTURAL DETAILING

cont...

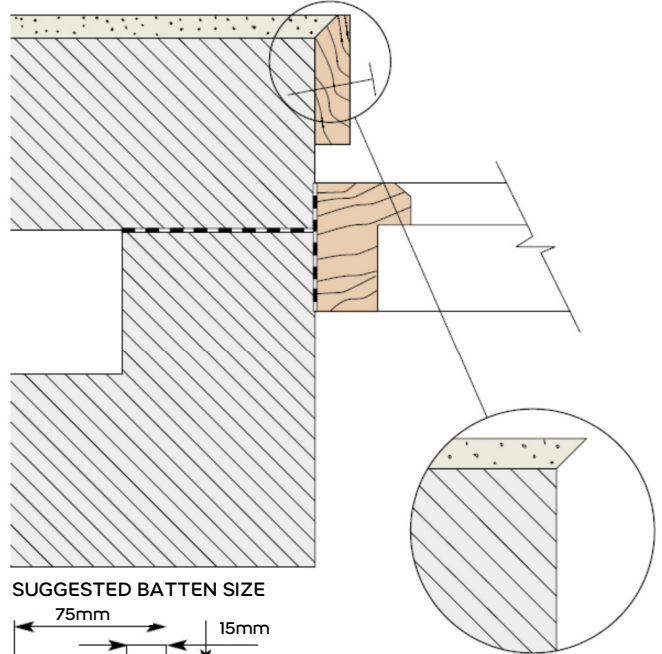
5.5 ARRISES



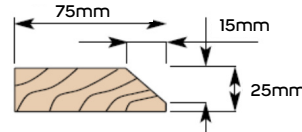
Angles in Ashlar and roughcast finishes can be formed by splayed timber rules that are temporarily fixed during application. This method is a necessity for Ashlar work as profiled beads will interfere with the continuity of the Ashlar joint.

For Scraped Finishes the design of UPVC Y section profiles ensures the render thickness is maintained all the way around the arris as opposed to the traditional metal design which diminishes the render thickness down to 3mm at the point of the nosing. This often leads to unsightly spalling .

USING BATTENS FOR ARRISES

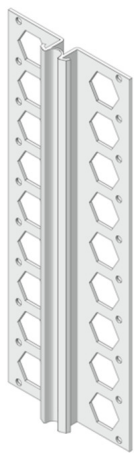


SUGGESTED BATTEN SIZE



BATTEN REMOVED FOR APPLICATION OF REVEAL WHEN MATERIAL SUFFICIENTLY HARD

5.6 MOVEMENT JOINTS



The traditional method of expressing a movement joint is with the use of 'greased' temporary battens to create the joint in the fresh rendering. The formed joint is then filled with a suitable elastomeric sealant after rendering. This method is recommended for Ashlar work where the cut detail may pass through the movement joint position. In all other finishes, the use of proprietary sealed movement beads is acceptable.

5.7 VERTICAL STOPS



Temporary timber battens can be used to form stops and bellcast details, particularly when Ashlar work is specified. For all other finishes use of proprietary profile beads.

cont.../

5.0 ARCHITECTURAL DETAILING cont...

5.8 FIXING PROFILE BEADS

Fix the beads with **weberend bead adhesive**, This method provides the applicator the ability to align the beads to the desired level and thickness. Please note it is not good practice to fix the beads by just troweling render over the wing of the bead. Do not use Gypsum based products for this purpose, this will result in a breakdown of the render bond.

For adhesion purposes dabs of bead adhesive should be applied directly to the virgin substrate at a minimum of 300mm centres apart. A dab constitutes of a bed of material to width of the bead wing (40mm), it should be approximately 100mm in length and to a minimum thickness of 15mm. Continuous dabs can be used when additional support is needed when attempting to correct minor misalignment of the construction. Press the bead firmly into the freshly applied dabs with a trowel; ensuring the bead wing is fully embedded. Trowel the excess material away as you fix the bead (please note the bead adhesive needs to be set back from the nose of the profile to ensure render coverage of at least 10 to 12mm).

The bead should be set sufficiently in a maximum of 2 hours at 20°C. However please note the substrate type will have an impact on the setting time of the product, particularly relating to its suction. In addition the ambient conditions may also have an impact. Once mixed use within 30mins, do not attempt to extend the pot life by adding additional water. Please note **weberpral** monocouche render can be used as an alternative bead fixing material.

5.9 PANEL SIZES

In theory, panels of any size can be successfully completed providing there are enough applicators available. It is important to have a suitable number of operatives in proportion to the panel size that will enable a flowing wet edge to be maintained in applied material across the entire panel. The use of a render pump will increase speed of application and productivity in comparison to traditional methods of application. The machine will also give a more consistent output over that of a manual application. However, with renders that require manual finishing techniques, e.g. scraped textures and Ashlar, it is important to consider how the area can be finished within the open time of the product.

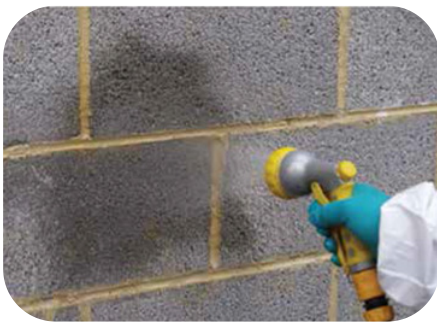


Application areas should therefore be limited in relation to the resources available to finish them. Consideration should be given to the rendered work so that any panel and those adjacent to it can be completed in a progressive sequence. This will help to avoid long delays between finishing dates, which in itself may contribute to differences in appearance between the panels. Any changes in application procedure, due to differences in climatic conditions for example, can result in shade variation between rendered bays. Whenever possible the panels should be finished on an external angle.

6.0 PREPARATION

6.1 SUCTION CONTROL

The suction of a substrate has implications on the finish, performance and the workability of the product applied. It is therefore important that an assessment of the suction is made prior to the application of material. The substrate should be tested to identify its initial suction. This can only be done by the visual inspection of water applied to the surface. Ideally the substrate should slowly draw the water into the surface leaving a wet residue.



If the test reveals the suction to be high (i.e. water disappears at a rapid rate leaving an apparently dry surface) then the substrate should be dampened evenly with a light spray of clean

water, re-tested and the process repeated until the correct suction is achieved. During this process, over wetting must be avoided to prevent impairing the bond of the render and possible increases in drying shrinkage in the construction due to saturation.

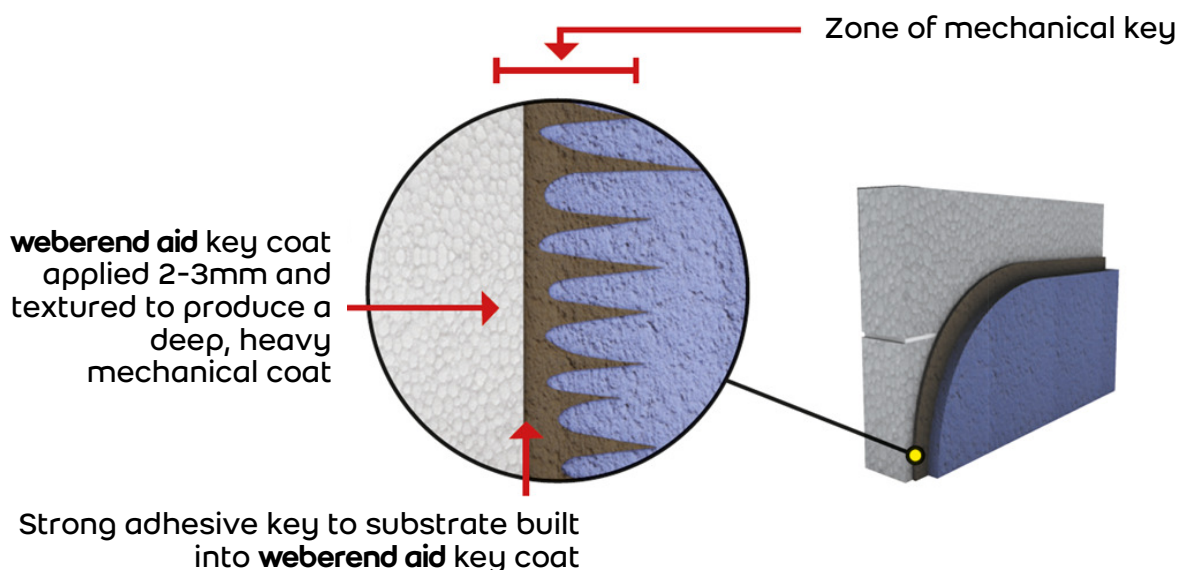
If there is a combination of issues, such as varying suction then an application of **weberend aid** is in order.

6.2 KEY COAT

weberend aid propriety mix designed to be used as an adhesive stipple pre-treatment.

By volume mix three parts of **weberend aid** with one part clean water using a suitable drill and whisk attachment. With a hawk and trowel, apply a tight layer 2–3mm thick to the substrate. Texture the surface using a well loaded roller. Apply no more than 2–3m² before texturing.

It is important that the final texture achieved should be a deep, heavy stipple finish with a textured depth of 5–10mm. Leave to cure for 48hrs. Insufficient key will inhibit the render bond; this is particularly relevant on low suction substrates where capillary absorption is minimal.



cont.../

6.0 PREPARATION

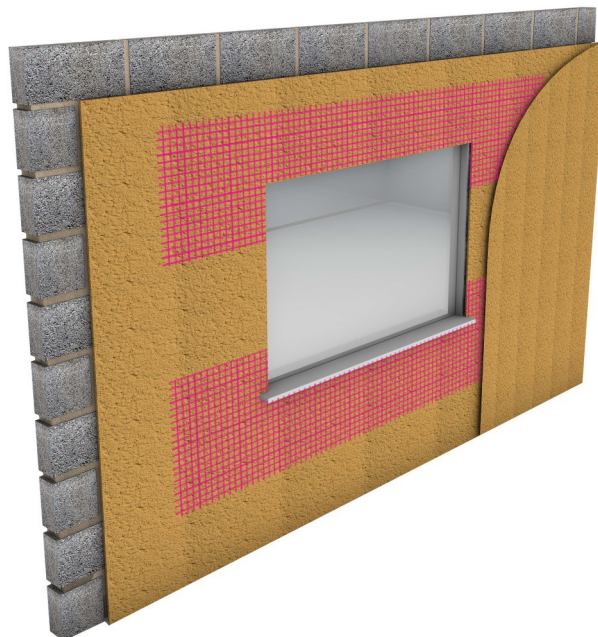
cont...

6.3 MESH REINFORCEMENT TO **weberpral**

The ability of the render to resist cracking and spread any stresses transmitted from the substrate can be increased by the inclusion of pink **weber standard mesh cloth**, alkali resistant fibre mesh, in the render in areas of typical stress points in the construction, i.e. above and below all openings such as windows and doors and at horizontal junctions of dissimilar substrates e.g. ring beams.

Mesh should be cut into strips that will extend 500mm x 250mm = H X L past the point of perceived weakness. Note the positioning of the mesh is critical within the render thickness; no contact should occur with the substrate; likewise to avoid mesh being exposed in the scraping process it needs to be located mid thickness in a zone of the first 5 to 10mm of the total render coat.

The mesh should be pressed evenly into a freshly applied pass of **weberpral** using a trowel or spatula. The mesh must be encapsulated in a wet on wet process to achieve the monolithic bond of the subsequent pass of render. Mechanically fixing the mesh is not in order and will impair the bond of the render to the wall. It is not a carrier lathing. Press evenly into the freshly applied render with a trowel or spatula.



7.0 SITE ORGANISATION & APPLICATION OF weberpral

7.1 SETTING UP THE PREPARED SUBSTRATE

Masking products should be used to give protection to adjacent work and to give clean straight edges. It should be removed immediately after finishing. During this process consideration should be given to the protection of glass and aluminium surfaces. Splashes of cement products can lead to surface etching and synthetic materials are not easily removed.

7.2 MIXING weberpral MATERIALS

Materials delivered to site should be stored off the ground and protected against the weather.

Manufacturers use stretch wrap on pallets of material to provide stability during transportation. It should not be relied upon to protect materials against wet weather. The material required for complete and adjoining panels should all be from the same batch number or be thoroughly dry mixed together before use.

The key methods of mixing for weberpral products are as follows:

- Render pump
- Drill and whisk/paddle

weber accelerateur monocouche is a liquid component that is used to replace a proportion of the gauging water in the mix. This product is not an anti-freeze however will speed up the initial set time to replicate the same setting as would be typical during summer months. If the correct dose is added it is anticipated that a 20°C scrape time will be achieved when working at 5°C. This will leave the products less susceptible to Lime Bloom.

When mixing the following should be considered:

- Use only materials directed in correct quantity.
- Discard suspect materials, which are damp or contaminated.
- Measure and maintain by volume proportion of gauging water.
- Don't over mix. Only mix sufficiently to combine materials - then use immediately.
- Once material has been mixed do not attempt to re-temper it to a workable consistency by adding more water.

7.3 APPLICATION OF WET MATERIALS

weberpral renders are full thickness renders applied in either one or two passes designed to hydrate together as one monolithic coat. The thickness of the passes is determined by the method of finishing and upon the chosen means of application. As an example; for a 15mm finished thickness, a single 18mm pass can be applied with a machine in one application. By hand, this same thickness would be achieved by the application of two 9mm passes (on average). The initial pass in this instance would normally be allowed to gel prior to the second pass. In areas of high stress (i.e. around a door or window opening) the reinforcement mesh can be added into the fresh initial pass. It is important to note that to ensure a finished monolithic render, application the second pass is generally applied within an hour of the initial pass depending on conditions.

With scraped finishes the final pass must not be less than 8mm as otherwise it is likely you will expose the cement rich interface between the passes produces a 'halo' ring effect'.

cont.../



7.0 SITE ORGANISATION & APPLICATION OF weberpral

7.4 RULING OFF/LEVELLING OF RENDERS

To achieve a flat level finish, passes of material should be applied in even thickness and levelled with a straight edge of suitable length. Regardless of the method of application (machine or hand) it is recommended that levelling tools be used as part of the process. Specialist serrated edges for leveling **weberpral** materials tend to be easier to handle and help to remove air pockets trapped in the wet render during application, particularly from hand application.



The applied material should be ruled level and flattened with a spatula to allow for finishing. This should be done during application whilst the material is still

workable. It is important to avoid over troweling of cement renders, as this will bring an excessive amount of cement laitance to the surface. This can create a harder surface to scrape when working with **weberpral** renders.

7.5 SCRAPED FINISH

Between 5 and 16 hours after application, depending on weather conditions, renders will be ready to scrape finish.

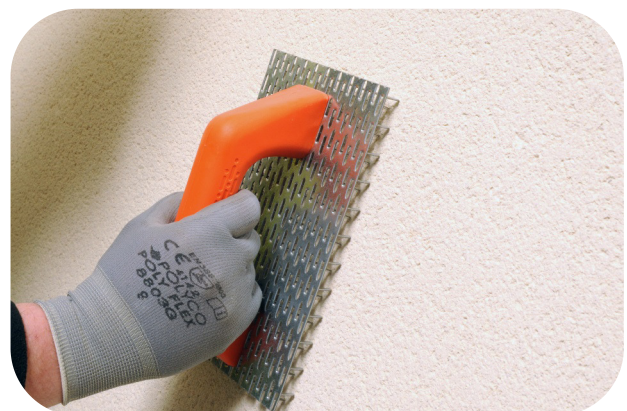
In Weber's experience the render is ready to be scraped when 2-3mm of material can be easily removed without clogging the scraping tool. Scraping the product early within the set will create a deeper texture and give the appearance of a darker colour shade. Scraping too late in the set will give the appearance of a much lighter colour shade.

Within the 5 – 16 hours after application there is on average a 2 – 3 hour period within the set where the product is ideal for scraping. This point of material set should be kept consistent throughout the works, and especially adjacent panels, to avoid colour variation. The surface should be scraped with a circular action keeping the scraper flat and under even pressure to avoid scoring the finished surface. Excessive pressure during scraping should not be required.

Ensure the surface is thoroughly scraped, as any missed areas will dry to a much lighter shade and become evident in the finished work. This effect is referred to as 'misses'. During the finishing of scrape renders, undulations (high points) created during application can be removed with an I-section scraping tool. This is particularly relevant for ashlar finishes, as the feature lines may highlight any undulations in the surface.



cont.../



7.0 SITE ORGANISATION & APPLICATION OF weberpral cont...

7.6 SPRAYED ROUGHCAST TEXTURE

Note from experience it is essential that a batch mixing pump is employed for successful texturing. The initial basecoat should be applied by machine at a thickness relevant to satisfy the exposure rating. The base coat should be ruled level and flat and then allowed to pick up for a period of between 1 and 2 hours before application of the second pass.

The second pass, gives the textured finish to the desired affect. Various degrees of textures can be achieved from a Tyrolean fine finish through to a heavy roughcast effect. Regardless of texture chosen it is imperative that the combined final thickness of the render at its lowest point relates to the exposure rating. Due to extensive choice of different textures it is advisable to prepare an on-site sample for client approval prior to commencement of works.

The process of achieving these textures is by lowering the pressure of the render pump for heavier textures and speeding up for finer finishes. Additionally the nozzle size of the spray gun can be varied to assist in these textures. A consistent texture is normally produced by moving the spray gun with a circular action, maintaining a regular distance and orientation between the nozzle end and the render panel. During the application of this pass a flowing edge must be maintained and thought should be given regarding potential obstructions when applying texture (design of scaffolding). The less number of interruptions to this operation will allow for the best finish. Regardless of texture chosen it is imperative that the combined final thickness of the render at its lowest point relates to the exposure rating. Due to extensive choice of different textures, it is advisable to prepare an onsite sample for client approval prior to commencement of works.



7.7 ASHLAR DETAILING (SCRAPED FINISHES)

Directly after scraping and before brushing the elevation ashlar can be formed with reference to the guidance below:

- The required ashlar profile should be chosen to reflect the depth in relation to the thickness of render
- The ashlar lines should be set out from a datum line. It is important not to use string courses or plinths as reference points
- Avoid ashlar lines to the corners of windows or in line with window details.

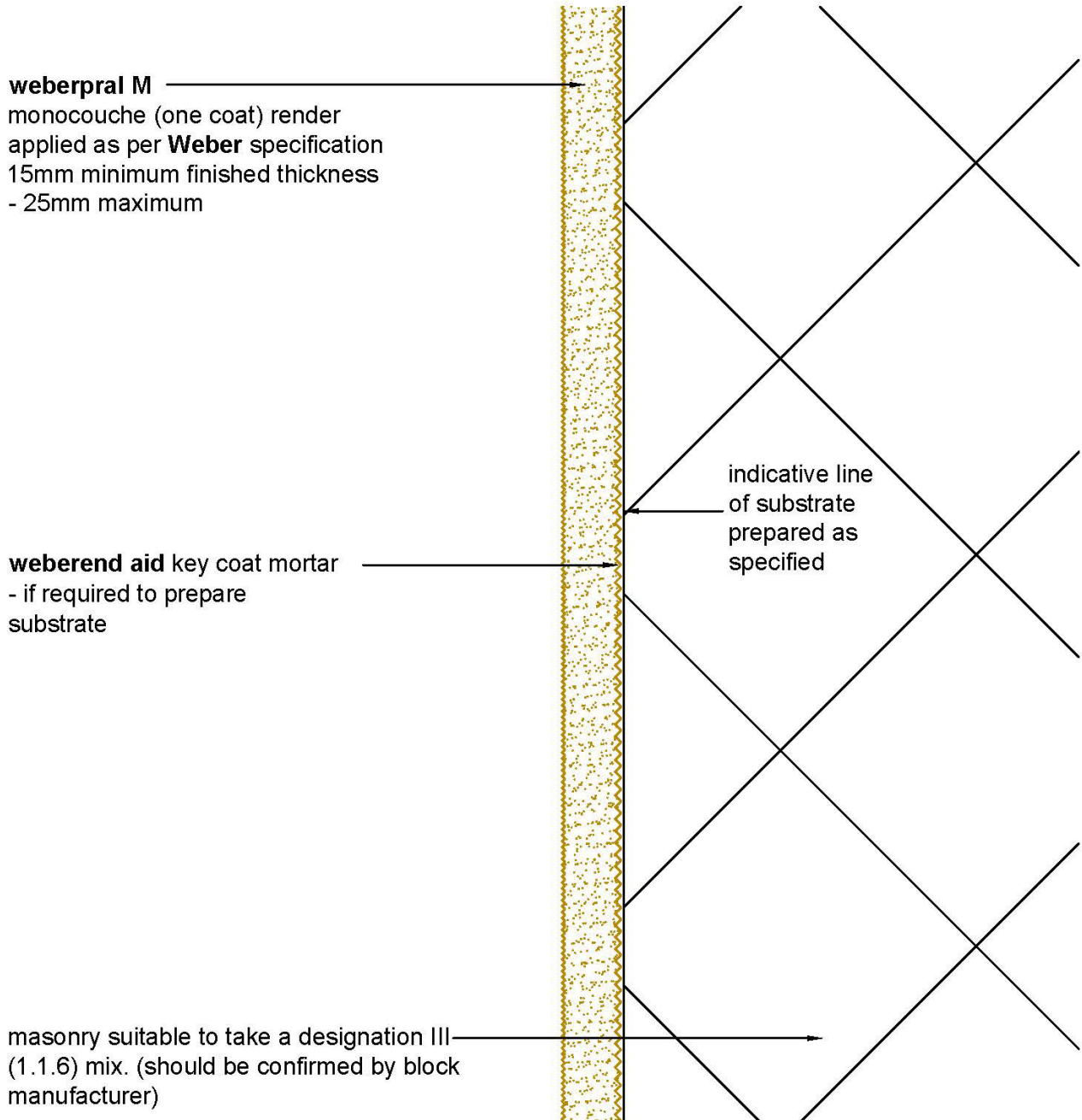




Typical Details

| | |
|---|----------------|
| DETAIL SECTION - MAIN WALL | Page 17 |
| DETAIL SECTION - BASE | Page 18 |
| DETAIL PLAN - CORNER | Page 19 |
| DETAIL SECTION - WINDOW HEAD | Page 20 |
| DETAIL SECTION - WINDOW SILL | Page 21 |
| DETAIL SECTION - WINDOW JAMB | Page 22 |
| DETAIL PLAN - VERTICAL EXPANSION JOINT | Page 23 |
| DETAIL PLAN - ALTERNATIVE VERTICAL EXPANSION JOINT | Page 24 |
| DETAIL SECTION - SOFFIT (STEEL LINTOL) | Page 25 |
| DETAIL PLAN - weberpral / webertherm EWI INTERFACE | Page 26 |
| DETAIL SECTION - COPING / PARAPET | Page 27 |
| DETAIL SECTION - BRICK / STONE PLINTH | Page 28 |
| DETAIL PLAN - BRICK ABUTMENT | Page 29 |
| DETAIL PLAN - RENDER STOP | Page 30 |
| DETAIL SECTION - SYSTEM PROTRUSION | Page 31 |
| DETAIL SECTION - RAKING ABUTMENT | Page 32 |
| DETAIL SECTION - RWP FIXING | Page 33 |
| DESIGN SHEET - ASHLAR DETAILS | Page 34 |
| DESIGN SHEET - USING BATTENS FOR ARRISES | Page 35 |
| DESIGN SHEET - QUIONS IN RENDER | Page 36 |
| DESIGN SHEET - RENDER STRING COURSES | Page 37 |

weberpral Monocouche Render Typical Details

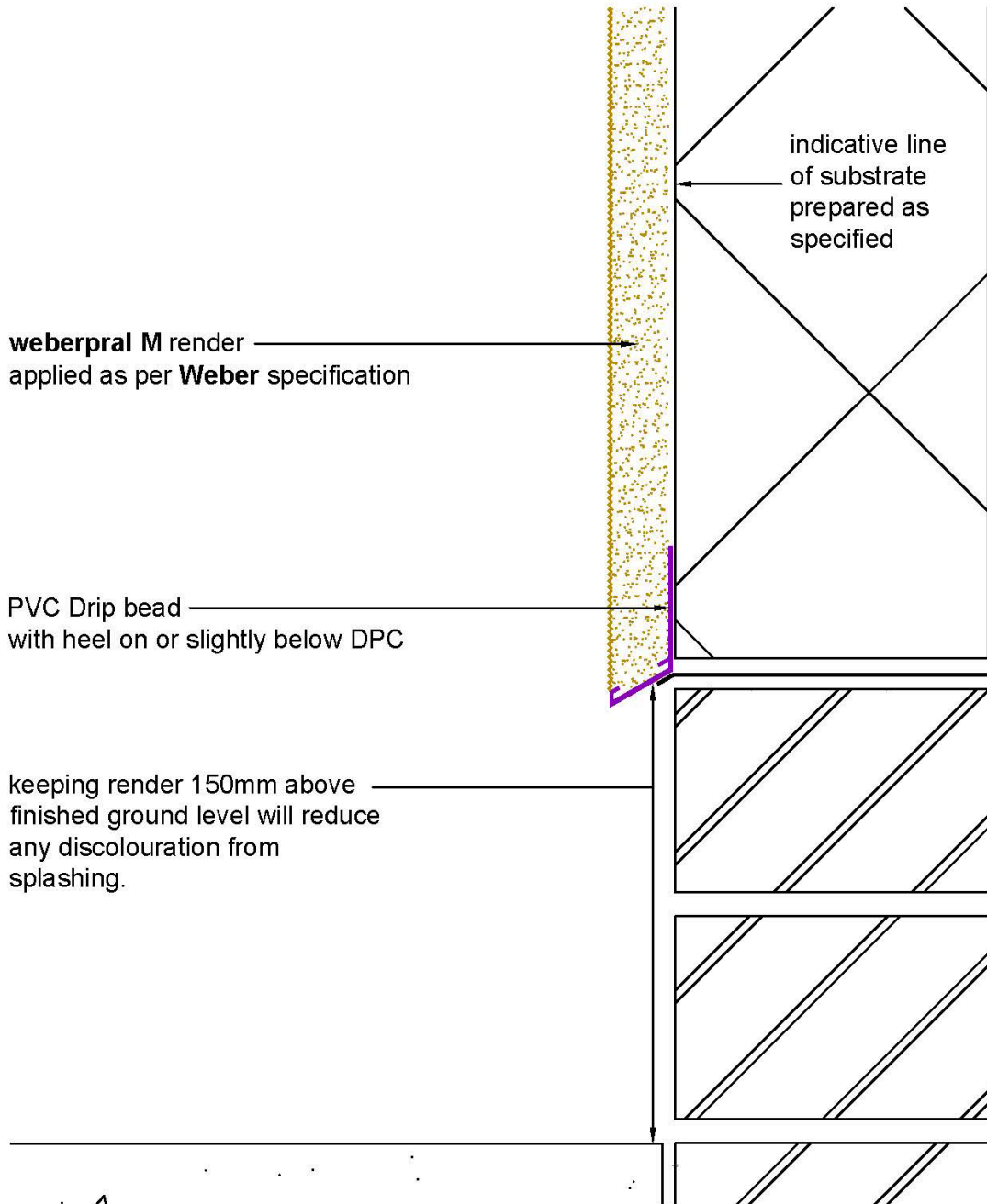


weberpral M

NOTES: Installation to comply with **Weber** printed instructions / for as specified items refer to contract documents

| | | |
|---|----------------|---------------------|
| CLIENT | Date | Scale 1:2 |
| PROJECT | Ref | |
| DWG TITLE Detail Section - Main Wall | Drm SJR | No pral.M-01 |

weberpral Monocouche Render Typical Details

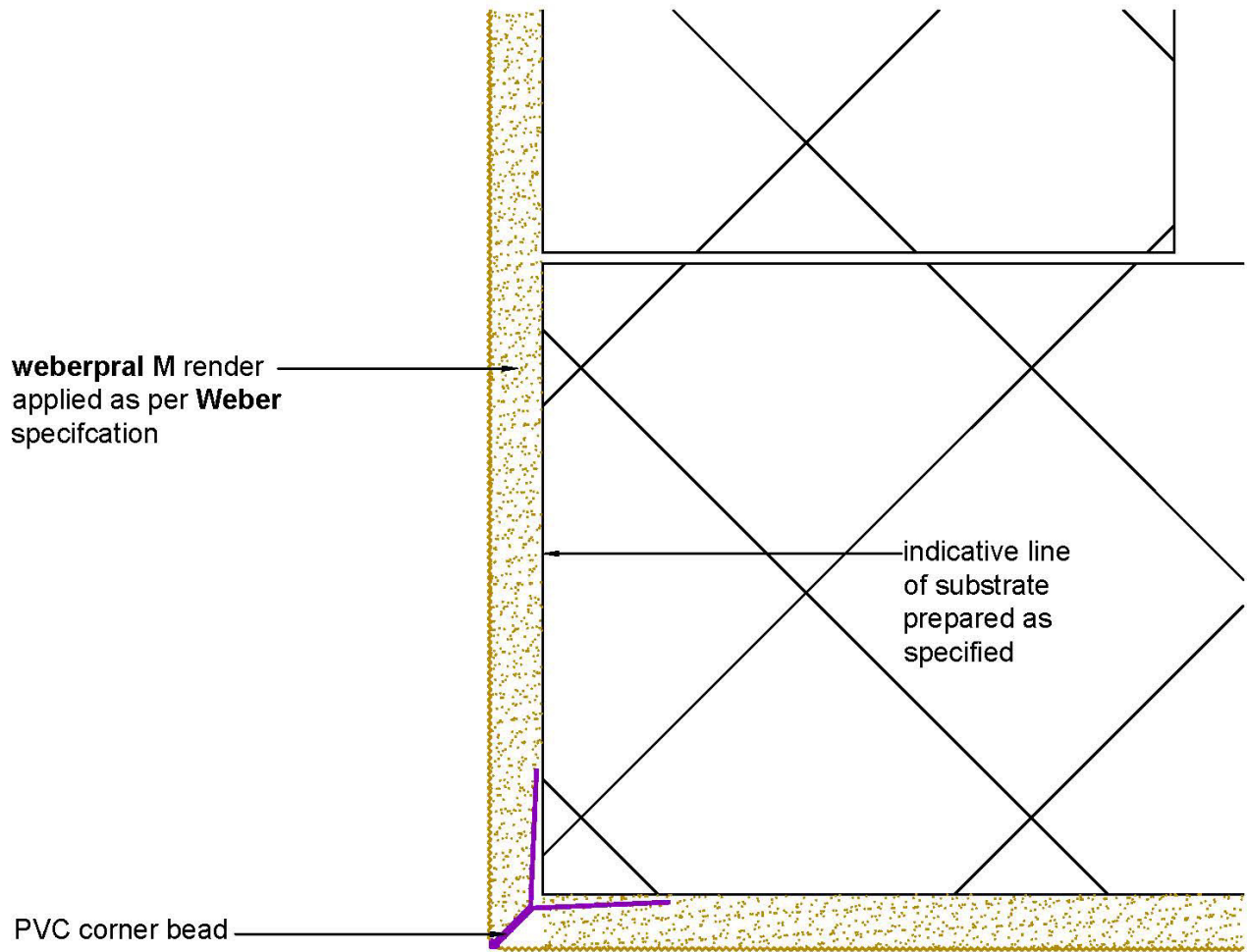


weberpral M

NOTES: Installation to comply with **Weber** printed instructions / for as specified items refer to contract documents

| | | |
|--|----------------|---------------------|
| CLIENT | Date | Scale 1:2 |
| PROJECT | Ref | |
| DWG TITLE Detail Section - Base | Drm SJR | No pral.M-02 |

weberpral Monocouche Render Typical Details

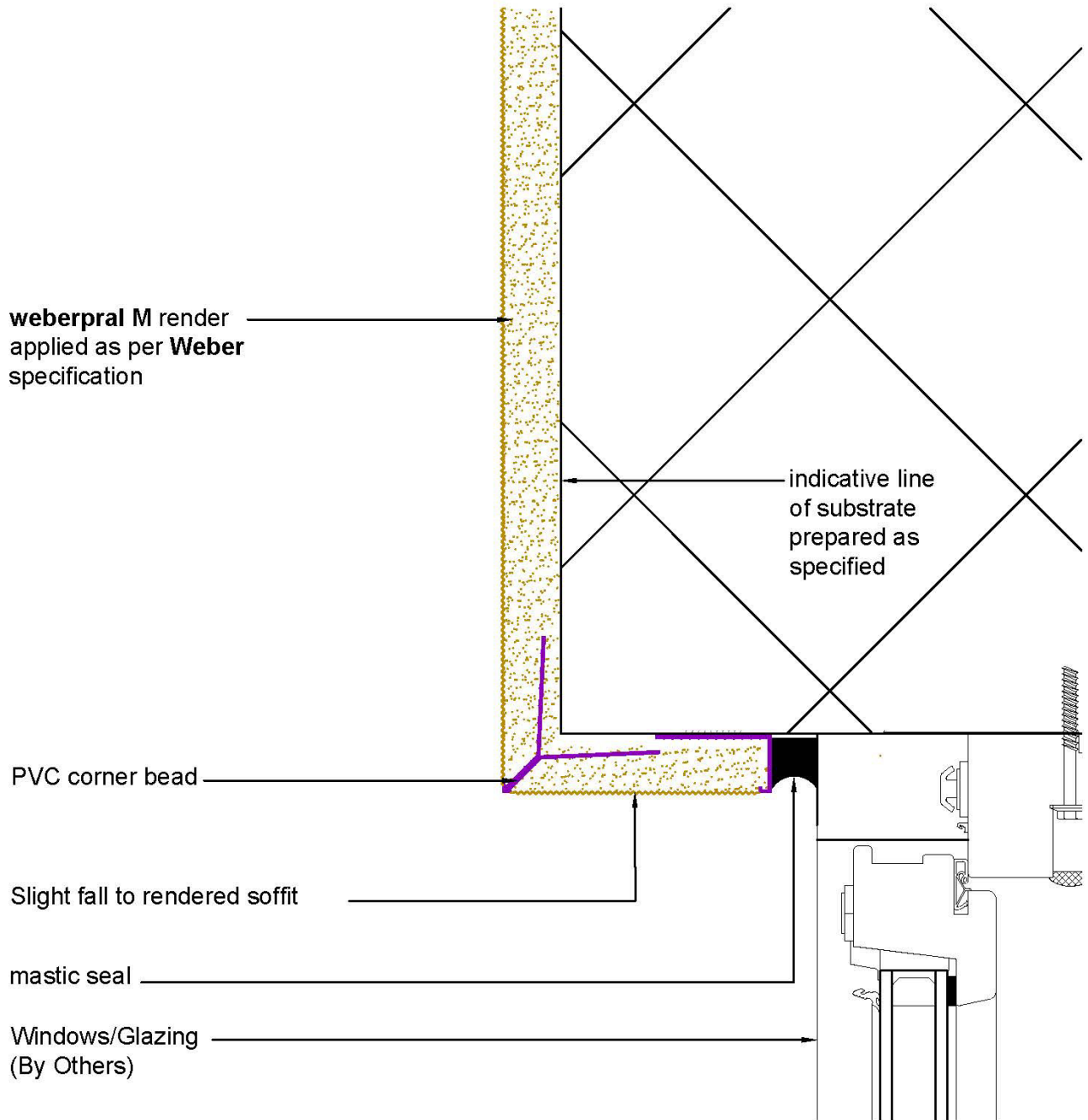


weberpral M

NOTES: Installation to comply with Weber printed instructions / for as specified items refer to contract documents

| | | |
|---------------------------------------|---------|--------------|
| CLIENT | Date | Scale 1:2 |
| PROJECT | Ref | |
| DWG TITLE Detail Plan - Corner | Drn SJR | No pral.M-03 |

weberpral Monocouche Render Typical Details

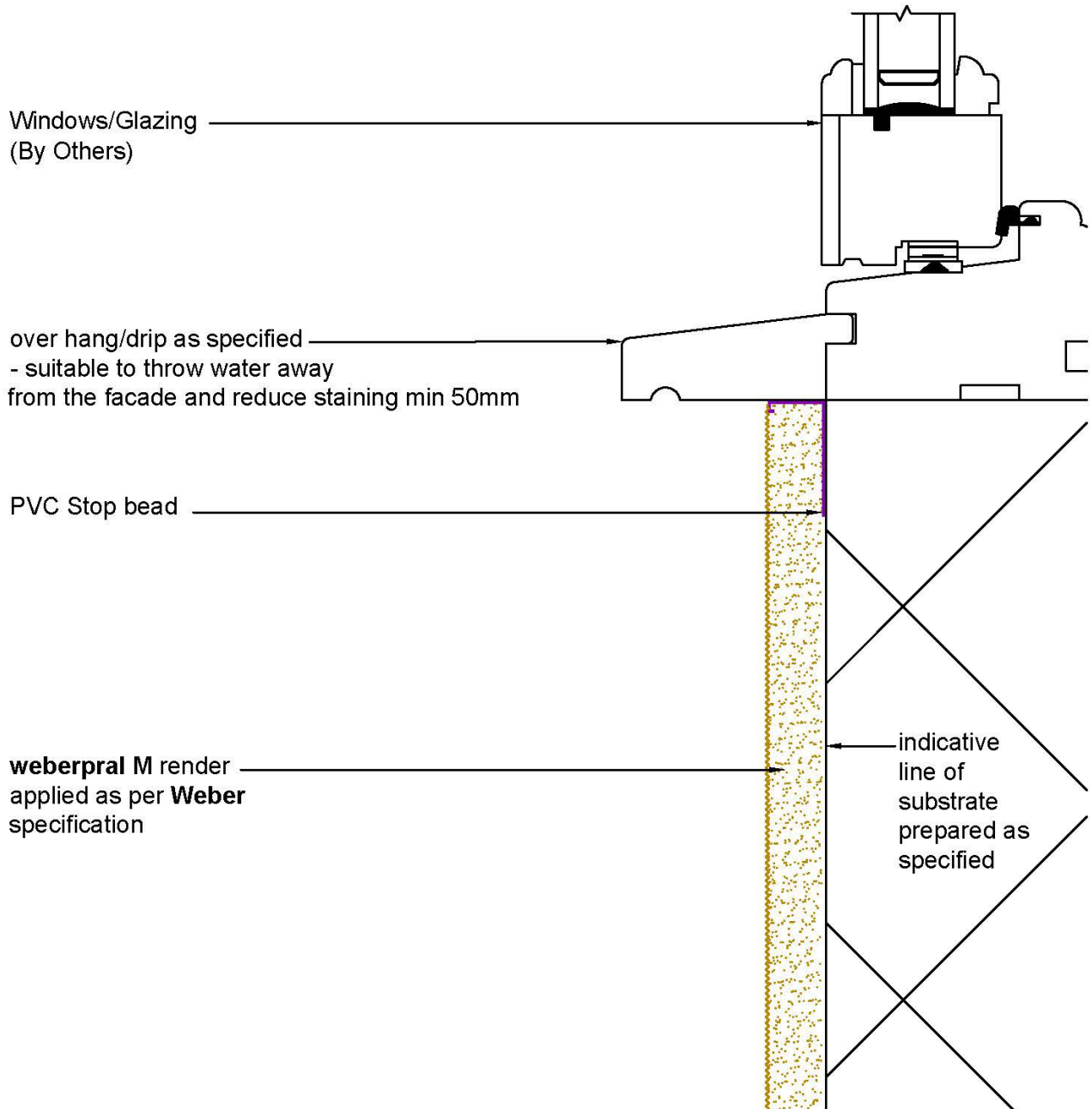


weberpral M

NOTES: Installation to comply with **Weber** printed instructions / for as specified items refer to contract documents

| | | |
|---|----------------|---------------------|
| CLIENT | Date | Scale 1:2 |
| PROJECT | Ref | |
| DWG TITLE Detail Section - Window Head | Drm SJR | No pral.M-04 |

weberpral Monocouche Render Typical Details

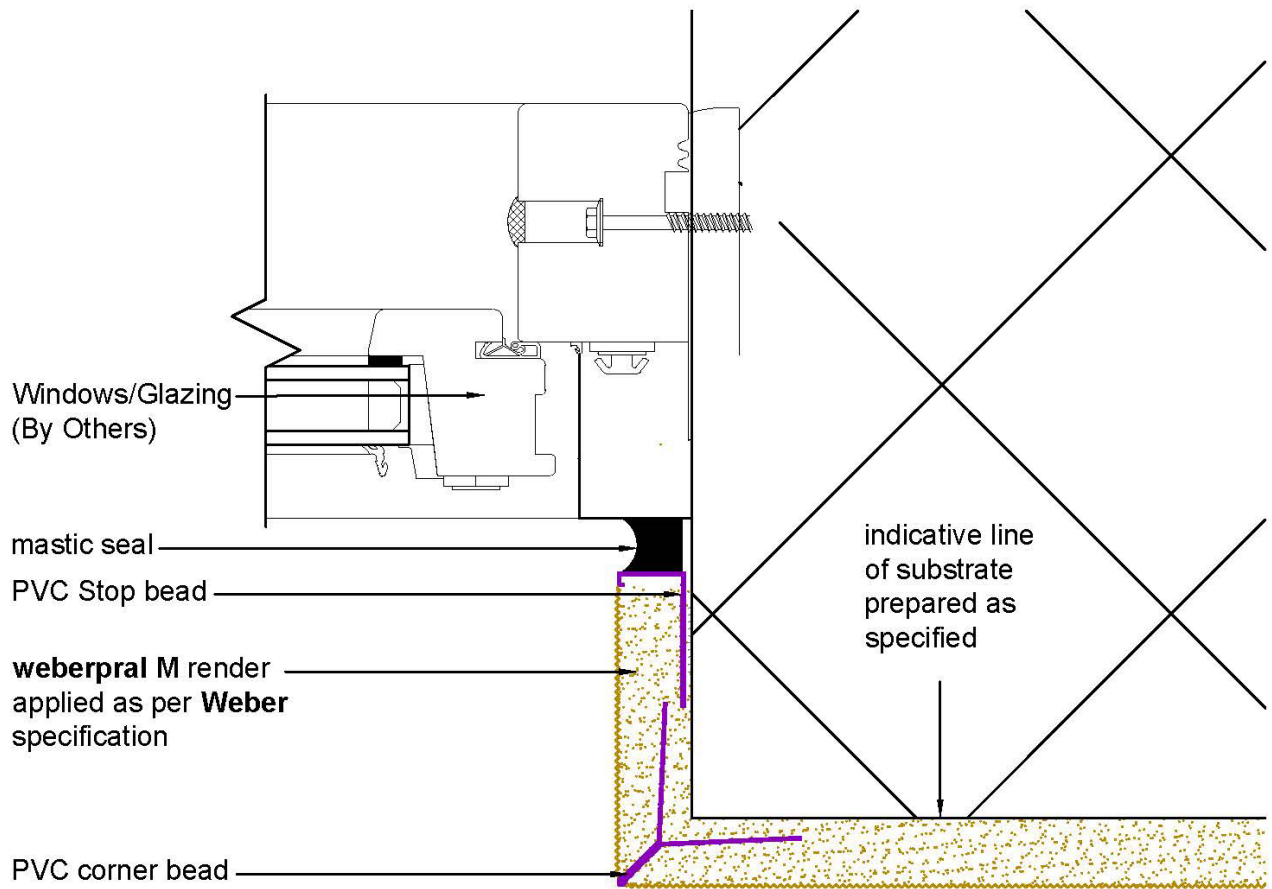


weberpral M

NOTES: Installation to comply with Weber printed instructions / for as specified items refer to contract documents

| | | |
|---|---------|--------------|
| CLIENT | Date | Scale 1:2 |
| PROJECT | Ref | |
| DWG TITLE Detail Section - Window Sill | Drm SJR | No pral.M-05 |

weberpral Monocouche Render Typical Details

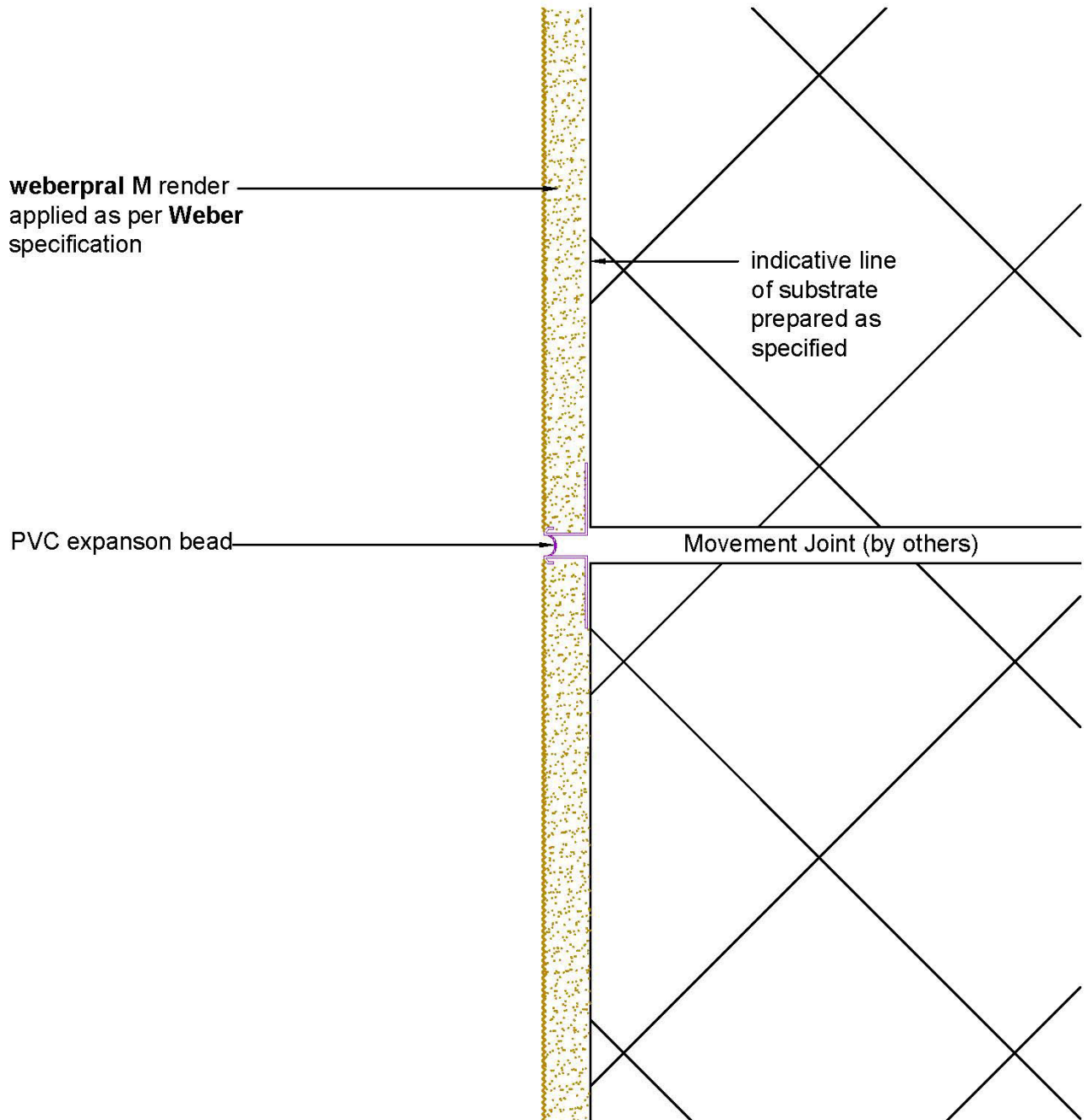


weberpral M

NOTES: Installation to comply with **Weber** printed instructions / for as specified items refer to contract documents

| | | |
|---|---------|--------------|
| CLIENT | Date | Scale 1:2 |
| PROJECT | Ref | |
| DWG TITLE Detail Section - Window Jamb | Drm SJR | No pral.M-06 |

weberpral Monocouche Render Typical Details

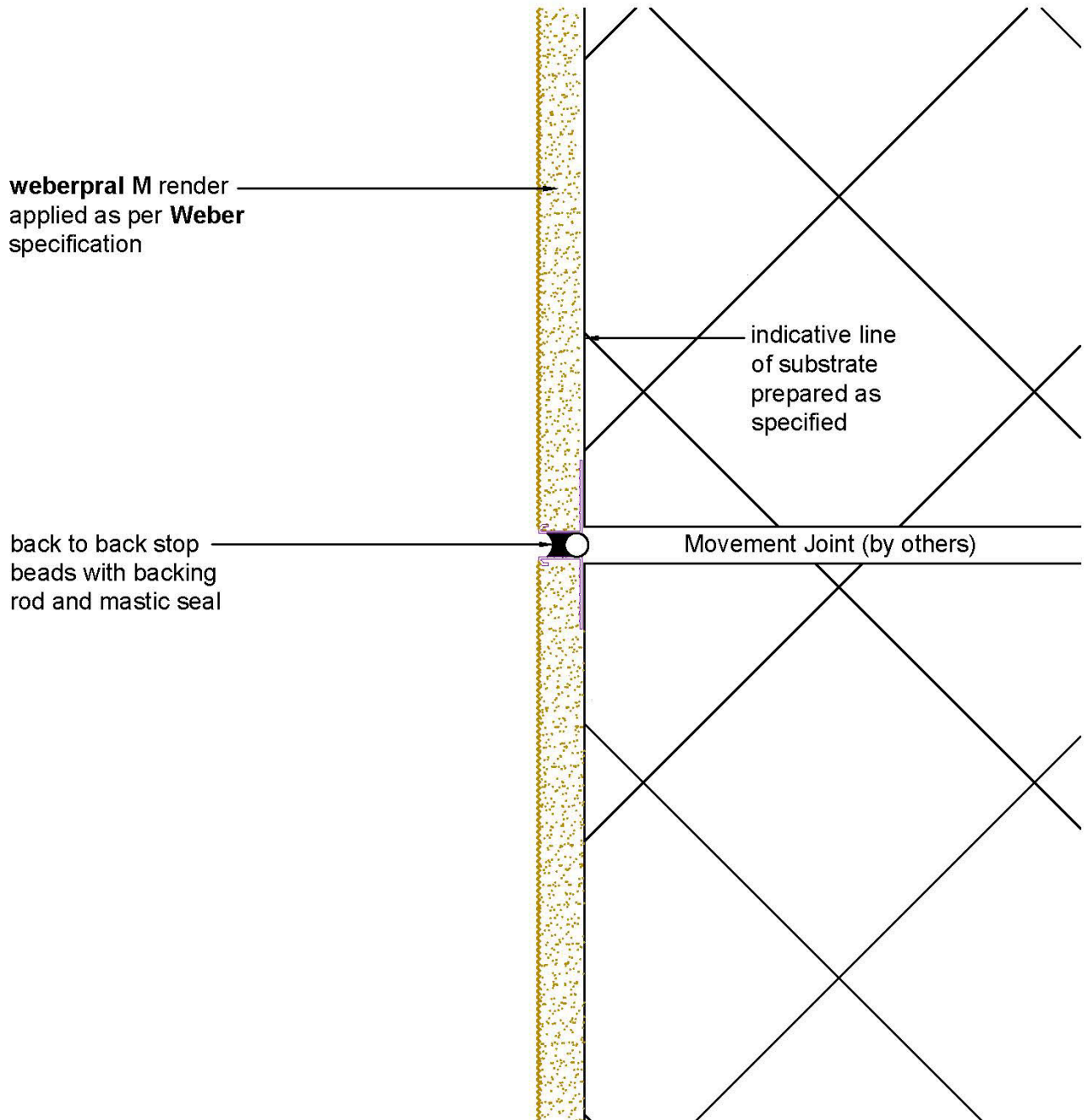


weberpral M

NOTES: Installation to comply with **Weber** printed instructions / for as specified items refer to contract documents

| | | |
|---|----------------|---------------------|
| CLIENT | Date | Scale 1:2 |
| PROJECT | Ref | |
| DWG TITLE Detail Plan - Vertical Expansion Joint | Drn SJR | No pral.M-08 |

weberpral Monocouche Render Typical Details

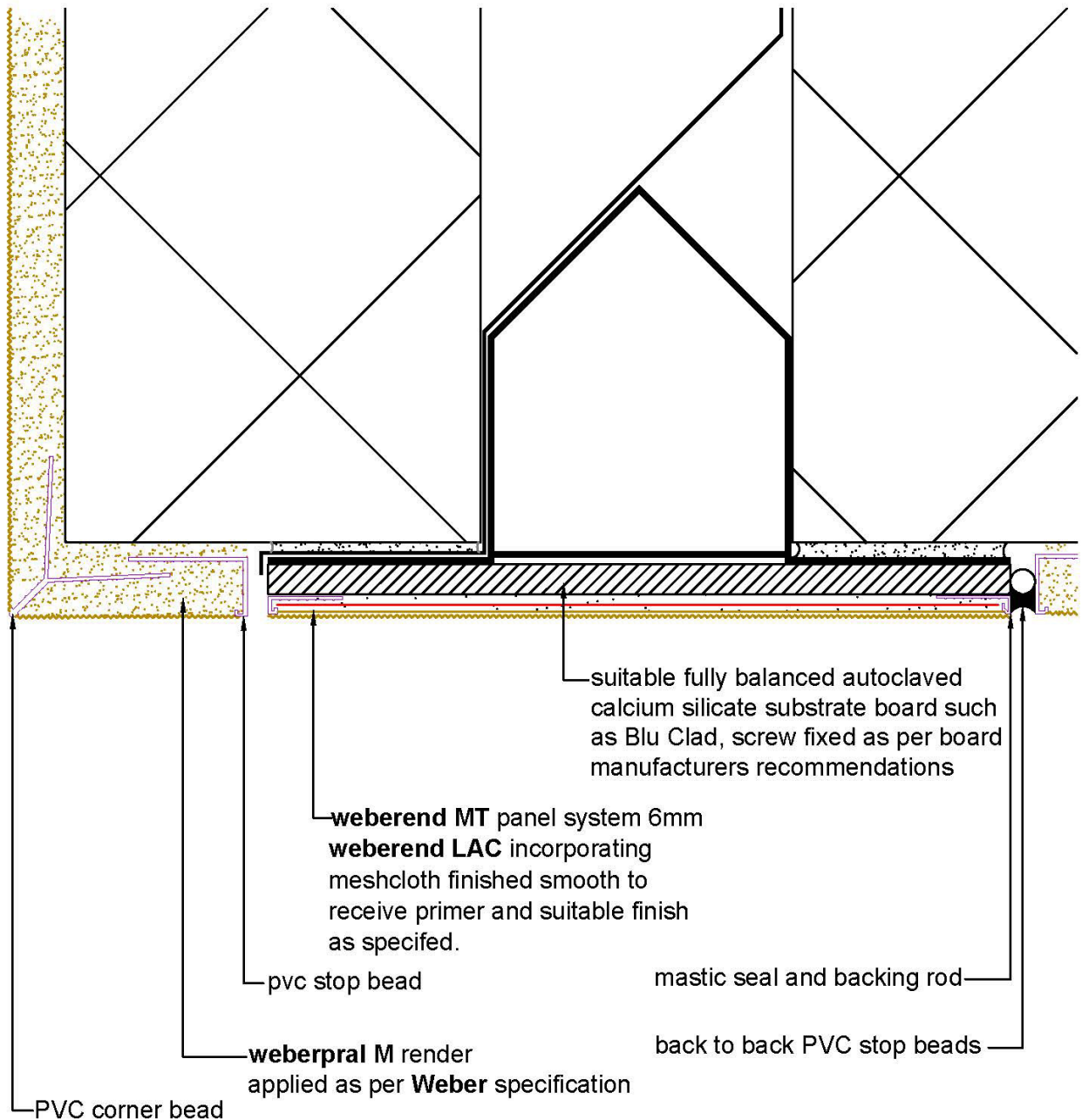


weberpral M

NOTES: Installation to comply with **Weber** printed instructions / for as specified items refer to contract documents

| | | |
|---|----------------|----------------------|
| CLIENT | Date | Scale 1:2 |
| PROJECT | Ref | |
| DWG TITLE Detail Plan - Alt Vertical Expansion Joint | Drn SJR | No pral.M-08a |

weberpral Monocouche Render Typical Details

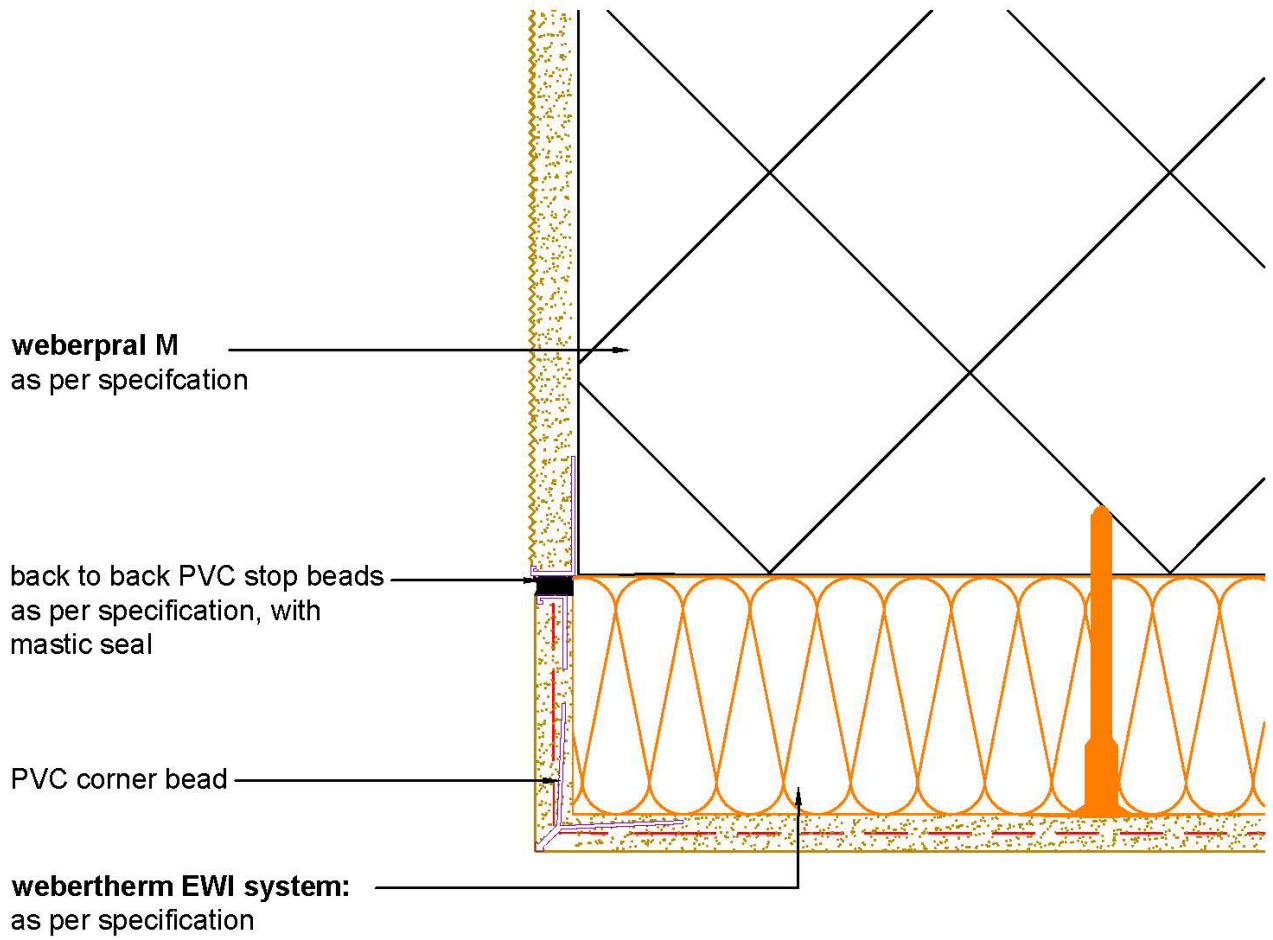


weberpral M

NOTES: Installation to comply with **Weber** printed instructions / for as specified items refer to contract documents

| | | |
|---|---------|--------------|
| CLIENT | Date | Scale 1:2 |
| PROJECT | Ref | |
| DWG TITLE Detail Section - Soffit (Steel Lintol) | Drm SJR | No pral.M-10 |

weberpral Monocouche Render Typical Details

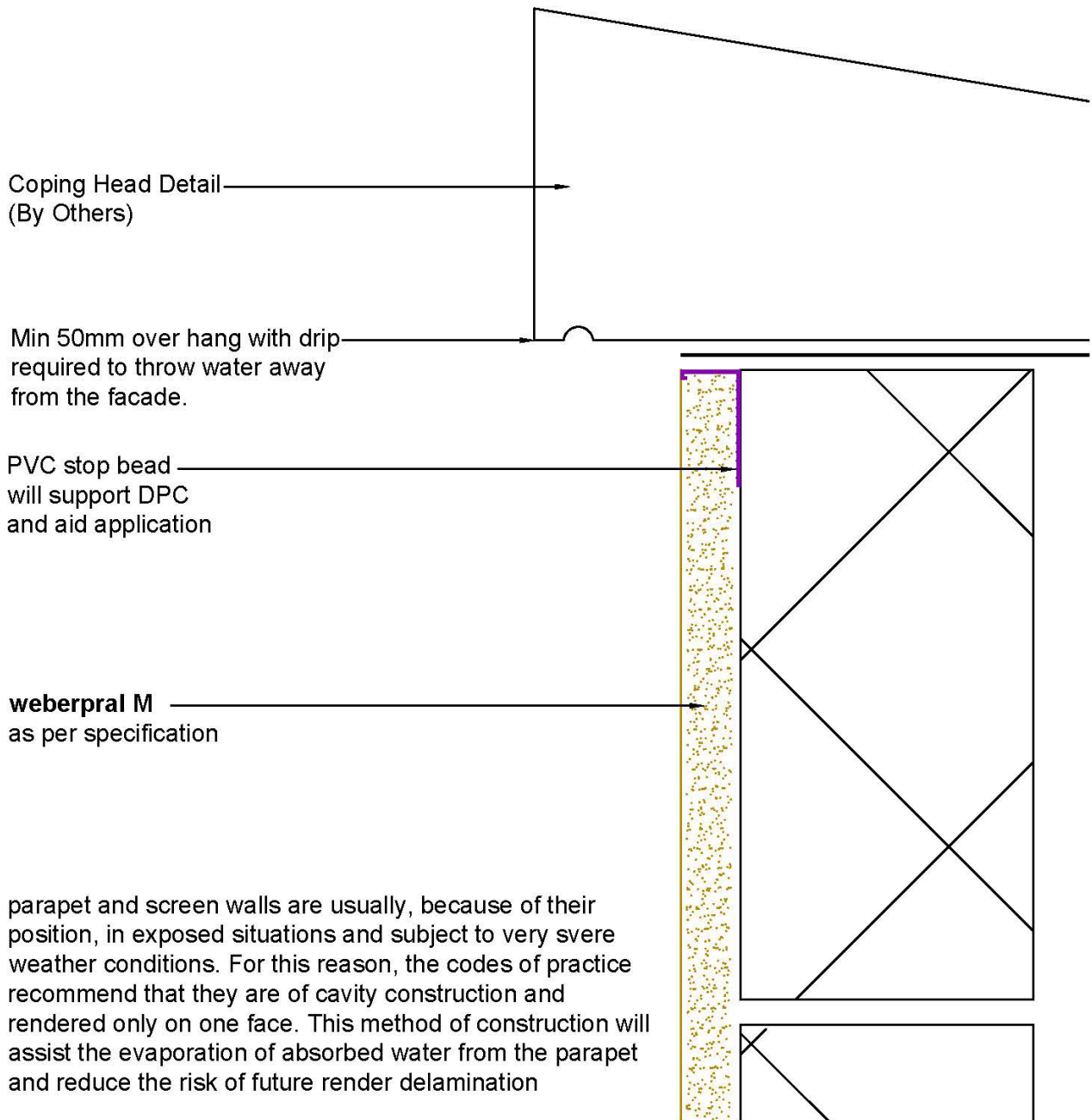


weberpral M

NOTES: Installation to comply with **Weber** printed instructions / for as specified items refer to contract documents

| | | |
|---|---------|--------------|
| CLIENT | Date | Scale 1:2 |
| PROJECT | Ref | |
| DWG TITLE Detail Plan - weberpral M/webertherm EWI interface | Dwn SJR | No pral.M-11 |

weberpral Monocouche Render Typical Details

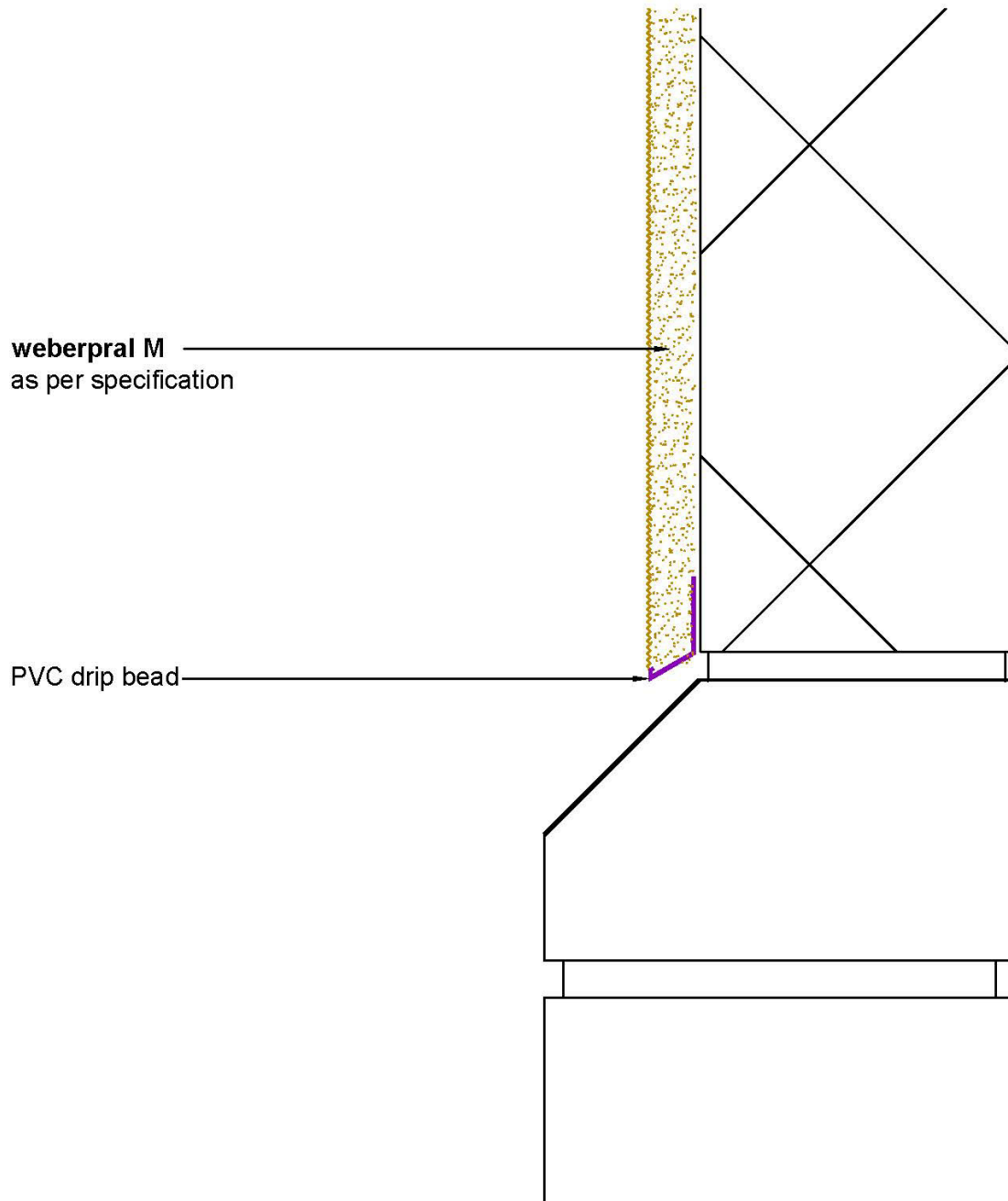


weberpral M

NOTES: Installation to comply with **Weber** printed instructions / for as specified items refer to contract documents

| | | |
|--|---------|--------------|
| CLIENT | Date | Scale 1:2 |
| PROJECT | Ref | |
| DWG TITLE Detail Section - coping/parapet | Dwn SJR | No pral.M-12 |

weberpral Monocouche Render Typical Details

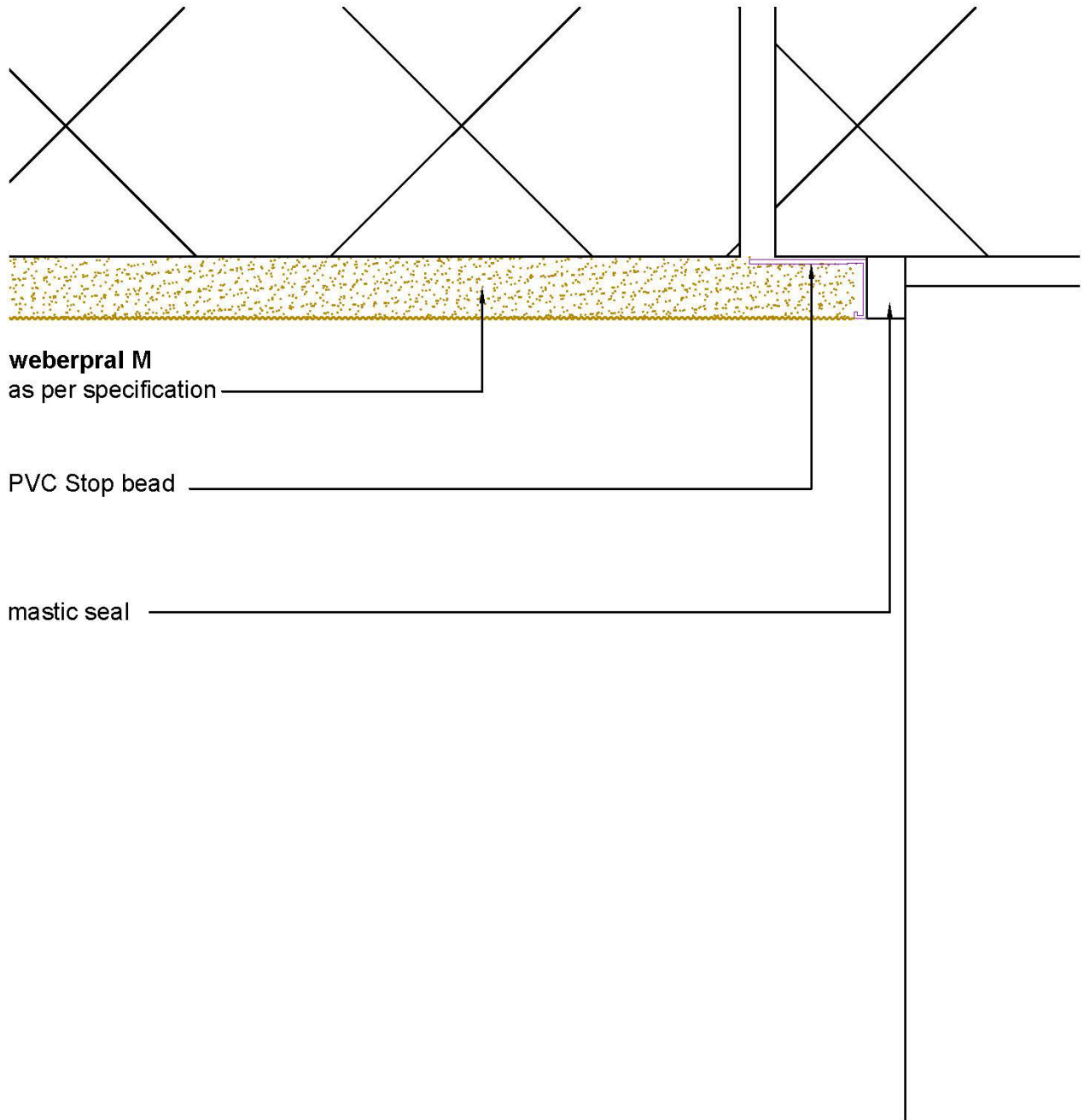


weberpral M

NOTES: Installation to comply with **Weber** printed instructions / for as specified items refer to contract documents

| | | |
|--|----------------|---------------------|
| CLIENT | Date | Scale 1:2 |
| PROJECT | Ref | |
| DWG TITLE Detail Section - Brick/Stone Plinth | Dwn SJR | No pral.M-14 |

weberpral Monocouche Render Typical Details

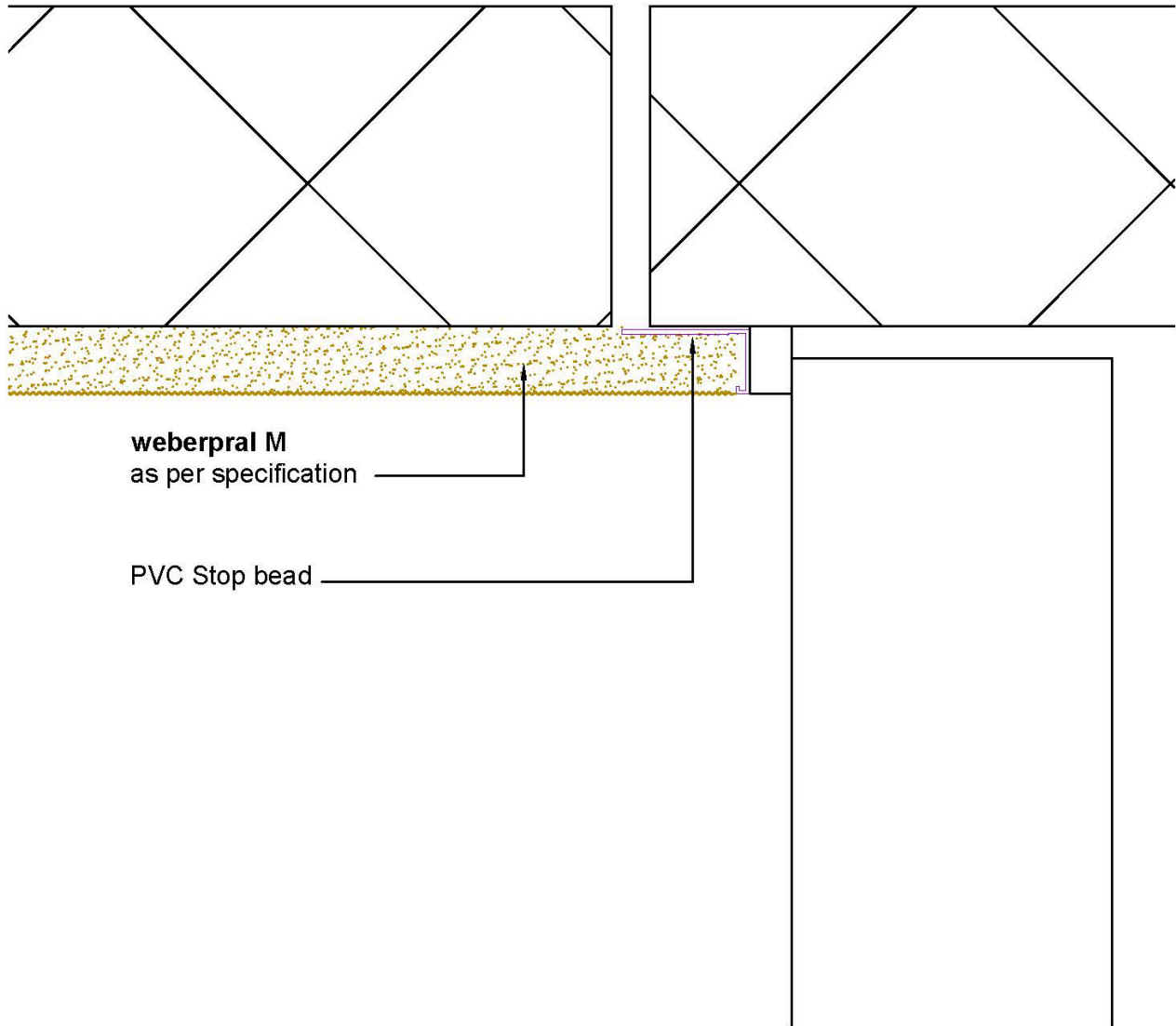


weberpral M

NOTES: Installation to comply with **Weber** printed instructions / for as specified items refer to contract documents

| | | |
|---|----------------|----------------------|
| CLIENT | Date | Scale 1:2 |
| PROJECT | Ref | |
| DWG TITLE Detail Plan - Brick Abutment | Drm SJR | No pral.M-14a |

weberpral Monocouche Render Typical Details

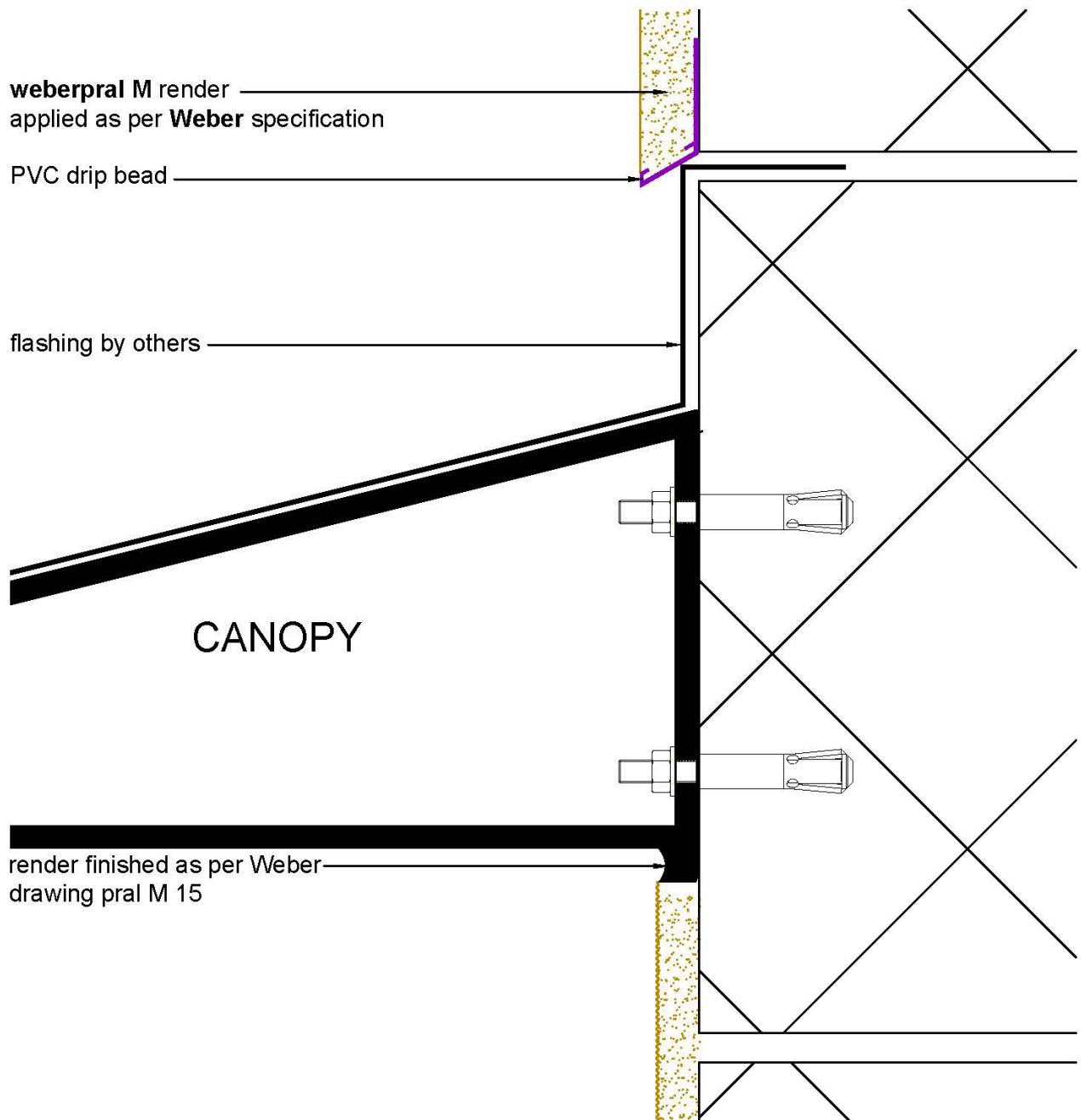


weberpral M

NOTES: Installation to comply with **Weber** printed instructions / for as specified items refer to contract documents

| | | |
|---|---------|---------------|
| CLIENT | Date | Scale 1:2 |
| PROJECT | Ref | |
| DWG TITLE Detail Plan - Render Stop. | Drn SJR | No pral.M-14a |

weberpral Monocouche Render Typical Details



weberpral M

NOTES: Installation to comply with Weber printed instructions / for as specified items refer to contract documents

| | | |
|---|---------|--------------|
| CLIENT | Date | Scale 1:2 |
| PROJECT | Ref | |
| DWG TITLE Detail Section - System Protrusion | Drm SJR | No pral.M-16 |

weberpral Monocouche Render Typical Details

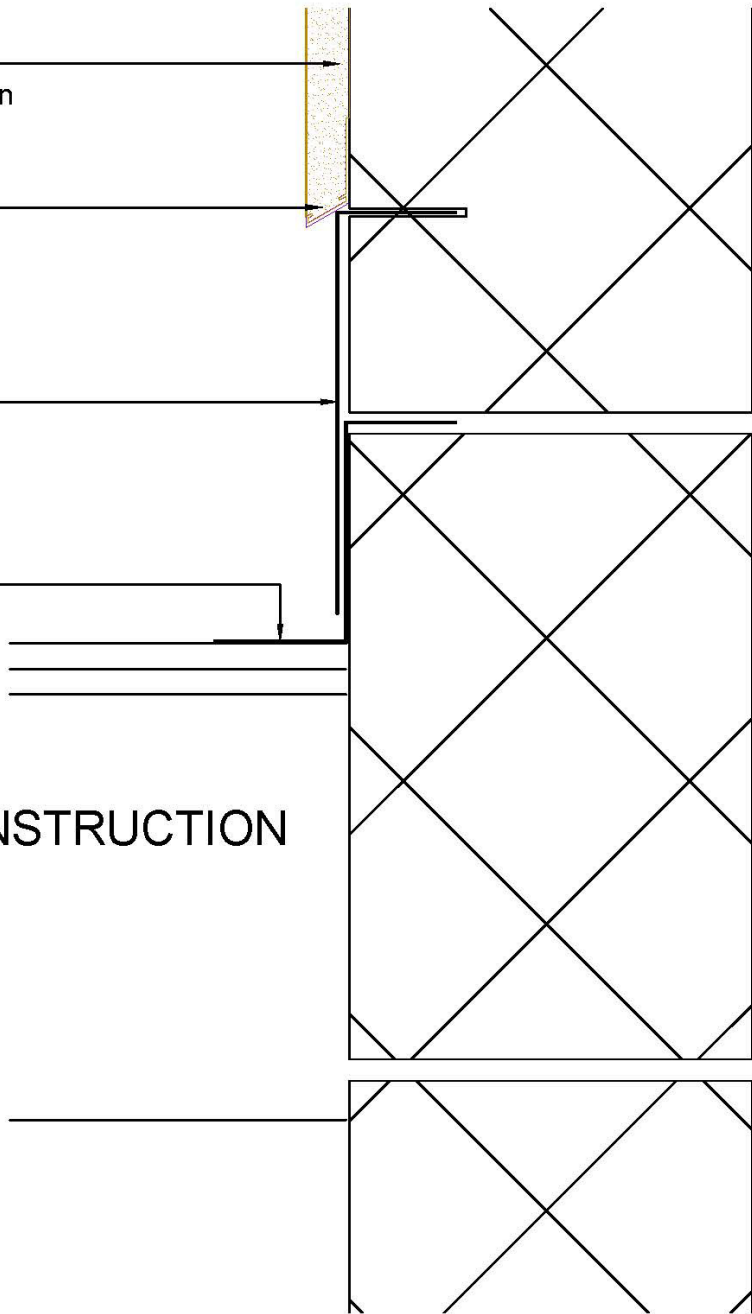
weberpral M render applied as per **Weber** specification

PVC drip bead fixed parallel to roofline above stepped flashing. Heel of bead close to lead flashing.

Flashing dressed into blockwork (by others).

Stepped flashing / Cavity tray (by others).

ROOF CONSTRUCTION



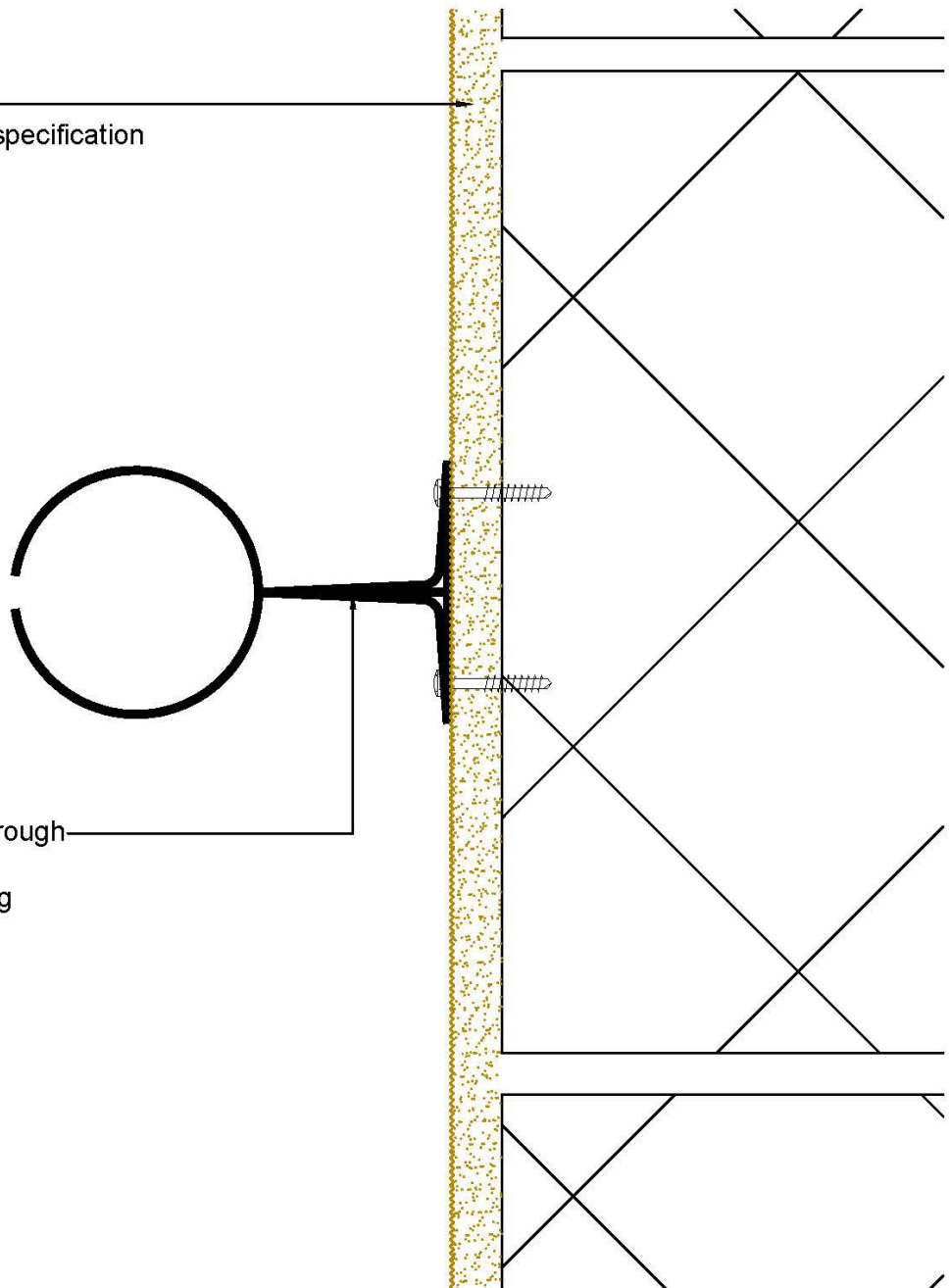
weberpral M

NOTES: Installation to comply with Weber printed instructions / for as specified items refer to contract documents

| | | |
|---|---------|-----------------|
| CLIENT | Date | Scale 1:2 |
| PROJECT | Ref | |
| DWG TITLE Detail Section - Raking Abutment | Drm SJR | No pral.M-16-01 |

weberpral Monocouche Render Typical Details

weberpral M render applied as per **Weber** specification



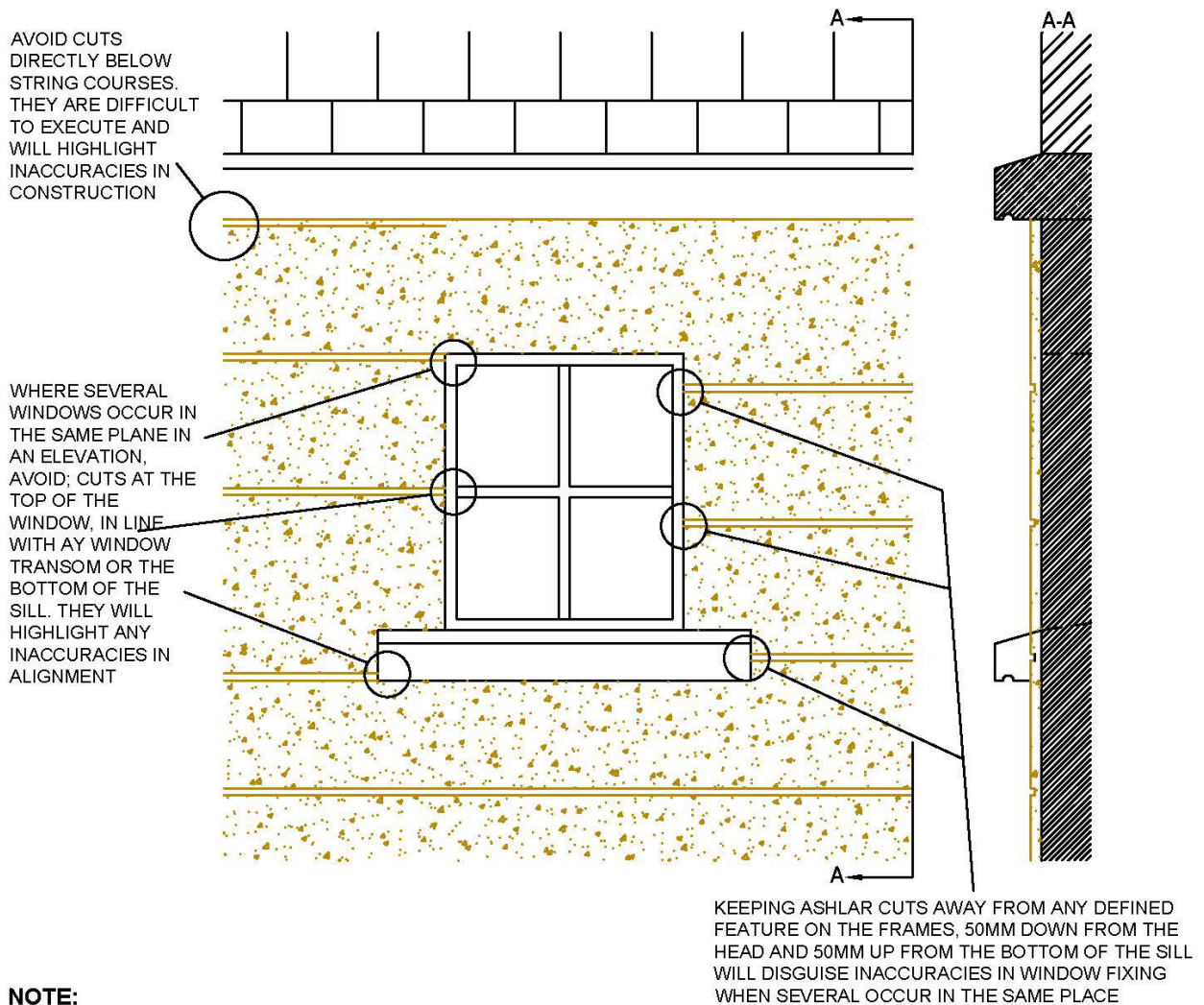
RWP fixing screwed through render system into substrate beneath using suitable fixings

weberpral M

NOTES: Installation to comply with **Weber** printed instructions / for as specified items refer to contract documents

| | | |
|--|----------------|---------------------|
| CLIENT | Date | Scale 1:2 |
| PROJECT | Ref | |
| DWG TITLE Detail Section - RWP Fixing | Drm SJR | No pral.M-17 |

weberpral Monocouche Render Typical Details



NOTE:

- 1/ ALWAYS SET OUT FROM A DATUM LINE
- 2/ DO NOT USE STRING COURSES OR PLINTHS AS REFERENCE POINTS
- 3/ CUTS MAY BE RETURNED INTO THE REVEAL PROVIDING THE FRAME ALLOWS FOR THICKNESS OF RENDER TO BE APPLIED
- 4/ IF THE FRAME IS NOT THICK ENOUGH, FINISH THE REVEALS WITHOUT ASHLAR DETAIL AT 15MM FINISHED THICKNESS
- 5/ OVERALL FINISHED THICKNESS OF 25MM WILL ALLOW FOR A 10MM DEEP ASHLAR CUT, 20MM FOR A 5MM DEEP CUT
- 6/ PROFILE OF THE CUT SHOULD DISCOURAGE WATER FROM STANDING ON THE LOWER EDGE

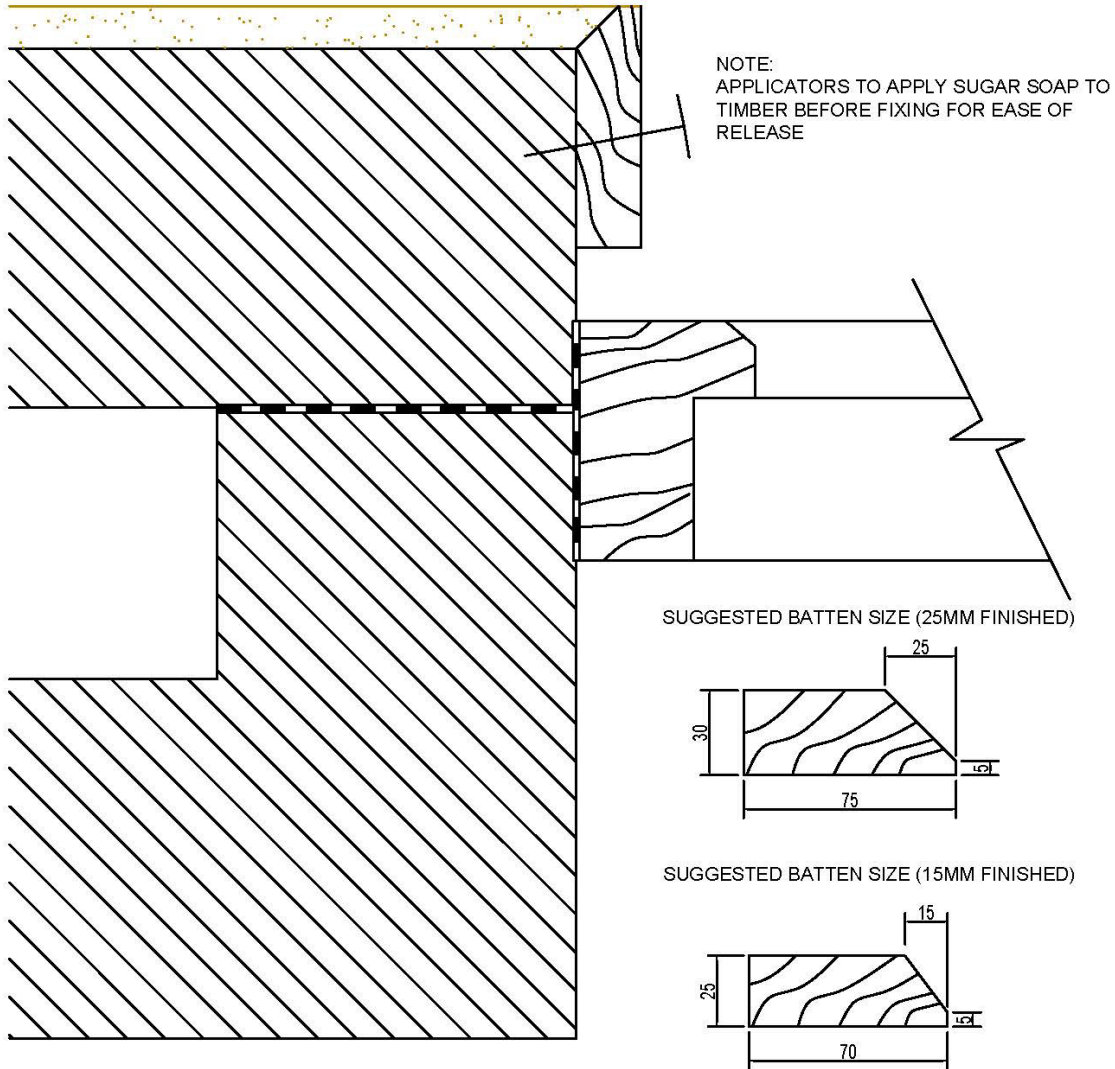
weberpral M

NOTES: Installation to comply with **Weber** printed instructions / for as specified items refer to contract documents

| | | |
|---|----------------|-----------------------|
| CLIENT | Date | Scale NTS |
| PROJECT | Ref | |
| DWG TITLE Design Sheet 1- Ashlar Details | Drm SJR | No pral.M-DS01 |

weberpral Monocouche Render Typical Details

SCRAPED RENDERS MAY TEND TO SPALL AWAY FROM THE NOSE OF SOME STANDARD ANGLE BEAD. FORMING ARRISSES TRADITIONALLY WITH A TEMPORARY CHAMFERED BATTEN AVOIDS THIS AND THE BEAD BEING VISABLE IN THE FINISH OF SCRAPED RENDERS. THE TIMBER BATTENS ARE ALSO USED WHEN ASHLAR MARKINGS ARE FORMED IN THE RENDER. TWO SIZES OF BATTENS ARE REQUIRED, 20MM FOR 5MM DEEP MARKINGS AND 35MM FOR 10MM DEEP MARKINGS



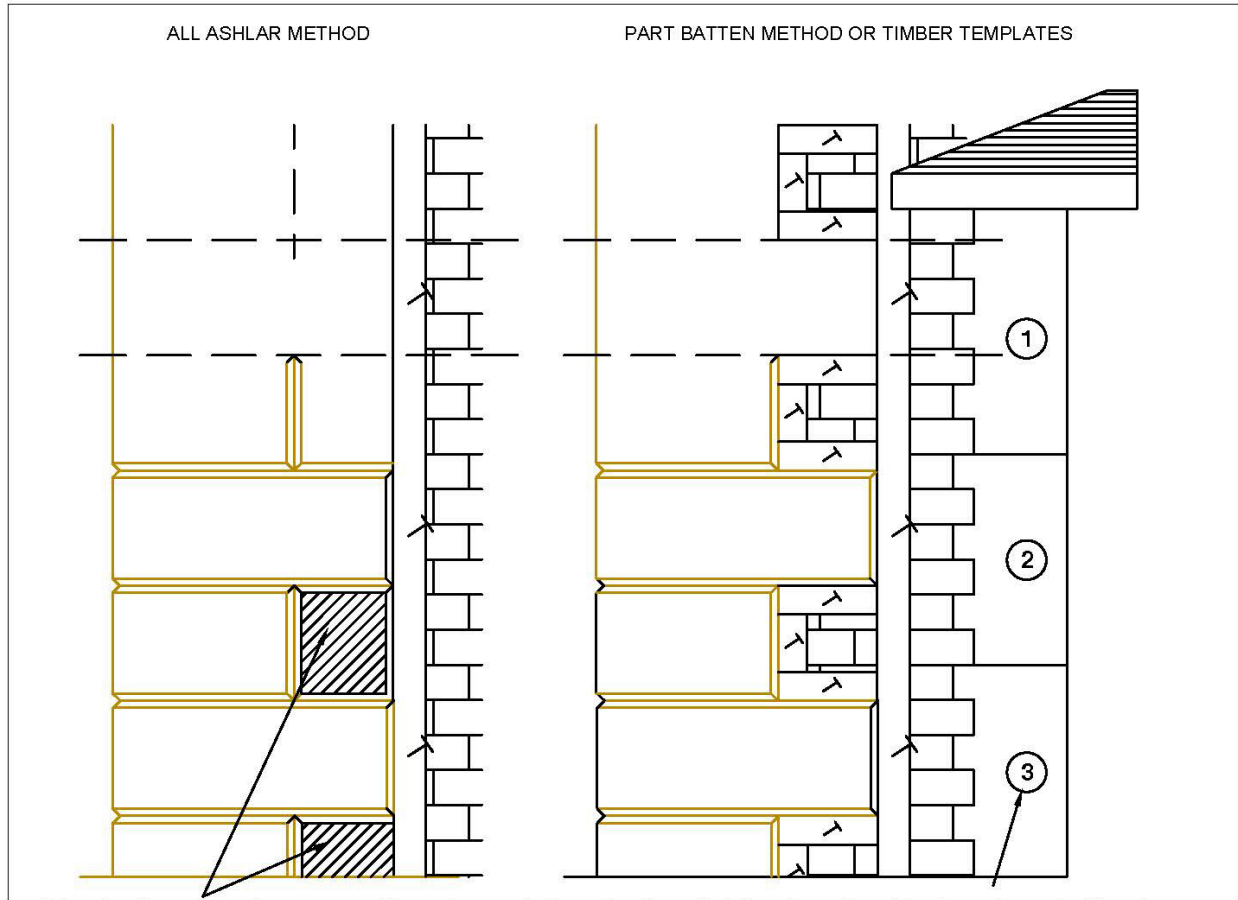
NOTE:
APPLICATORS TO APPLY SUGAR SOAP TO
TIMBER BEFORE FIXING FOR EASE OF
RELEASE

weberpral M

NOTES: Installation to comply with **Weber** printed instructions / for as specified items refer to contract documents

| | | |
|--|----------------|-----------------------|
| CLIENT | Date | Scale NTS |
| PROJECT | Ref | |
| DWG TITLE Design Sheet 2- Using Battens for Arrises | Drm SJR | No pral.M-DS02 |

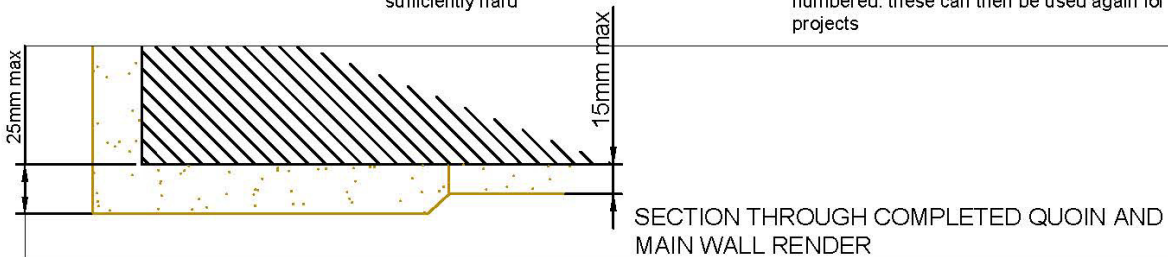
weberpral Monocouche Render Typical Details



carefully cut and remove waste areas

strike and remove battens when the material is sufficiently hard

plywood templates formed on each side and numbered. these can then be used again for future projects



note:

1/ **Weber** do not recommend using render quoins on walls that are otherwise facing brickwork. Unless the substrate is above 7n, the surface has a good texture(key) and that bedded reinforcement is used within the mortar joints

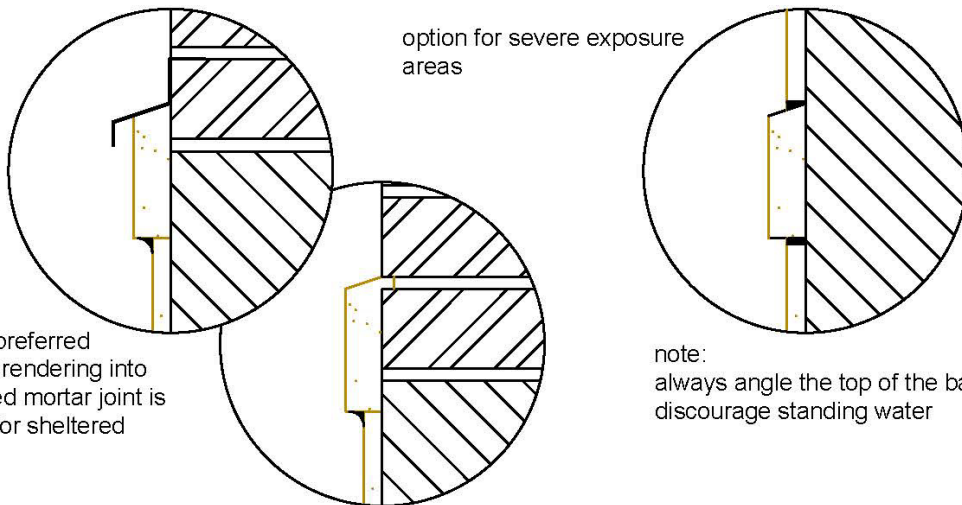
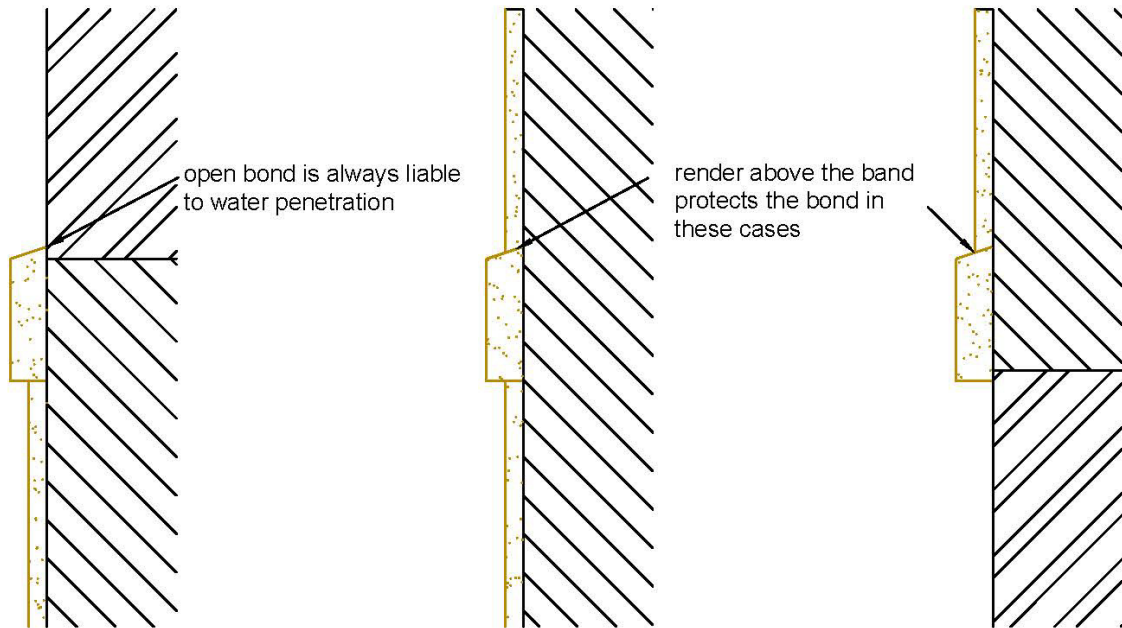
2/ the open horizontal edge of the bond to the substrate of the projecting 'stones' is difficult to seal from water ingress and, for this reason, is a potential source of future failure.

3/ Installation to comply with **Weber** printed instructions / for as specified items refer to contract documents

weberpral M

| | | |
|---|----------------|-----------------------|
| CLIENT | Date | Scale NTS |
| PROJECT | Ref | |
| DWG TITLE Design Sheet 2- Quoins in Render | Drn SJR | No pral.M-DS03 |

weberpral Monocouche Render Typical Details



note: **Weber** recommend a minimum finished thickness of 15mm up to a maximum of 25mm for their monocouche coloured renders.

weberpral M

NOTES: Installation to comply with **Weber** printed instructions / for as specified items refer to contract documents

| | | |
|--|----------------|-----------------------|
| CLIENT | Date | Scale NTS |
| PROJECT | Ref | |
| DWG TITLE Design Sheet 2- Render String Courses | Dwn SJR | No pral.M-DS04 |



Aftercare & Maintenance

We hope you are enjoying your new home, it has amazing kerb appeal with a fantastic façade, so what do you have to do to keep it looking great and performing to the highest standard? **weberpral** monocouche render is traditionally low maintenance but to ensure the optimum life and aesthetics please follow the guidelines detailed below...

Cleaning

weberpral render may be cleaned periodically with the use of a pressure washer incorporating a mild detergent or road traffic film remover in water. The spray pattern should be adjusted to form a fan rather than a jet and care must be taken at the exposed edges. The interval between treatments is purely dependant upon the amount of ground floor pedestrian 'traffic' and local atmospheric conditions. Organic growth should be brushed off the surface and subsequently treated with **weber CL150**.



Damage & Repairs

weberpral render is a through-coloured material and as such small knocks and abrasions will not be as noticeable as with traditional painted renders. Once applied, **weberpral** products are finished materials and repairs are always likely to be visible. For this reason we would, in general, recommend that full panels be removed and replaced. For more information on this please contact...

technical@netweber.co.uk

Painting

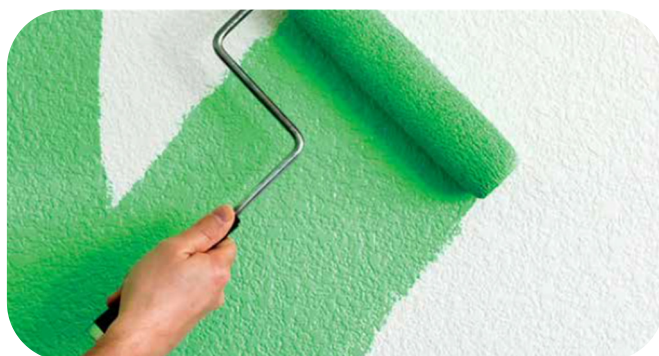
webersil P is a high performance paint that gives exceptional long term durability and performance. It is anticipated that the use of this product will not detract from the low maintenance benefits of the **weberpral** render. Providing that the render is clean, dry and sound, a direct application of **webersil P** is appropriate. For more information on this please contact... technical@netweber.co.uk

webersil P is manufactured in a wide range of colours. It is not possible to directly match a synthetic product to a mineral render. This is particularly prevalent in the case of coloured renders as there are many influencing factors surrounding the application that will affect the final cured shade of colour.

Cracks

Straight line cracking is not typical of render failure, but rather of the reflection in the render of a crack in the substrate. The cause should be investigated prior to repair in order to ascertain the likely event of any further movement or whether remedial works are required. This assessment should be undertaken by a structural engineer.

Inconspicuous cracks that remain dry and sound are usually best left alone. Cutting and repairing, however carefully done, invariably results in some differences in appearance over the area of the repair.



This system is one of a range of comprehensive construction solutions manufactured by Saint-Gobain Weber in the UK

For further information contact...

Saint-Gobain Weber

Dickens House, Enterprise Way, Maulden Road, Flitwick, Bedford MK45 5BY, UK



08703 330 070



mail@netweber.co.uk



www.netweber.co.uk



@SGWeberUK

This document is the property of Saint-Gobain Construction Products UK Limited trading as Saint-Gobain Weber and must not be copied in part or in whole without permission

Issue Date 07/10/16