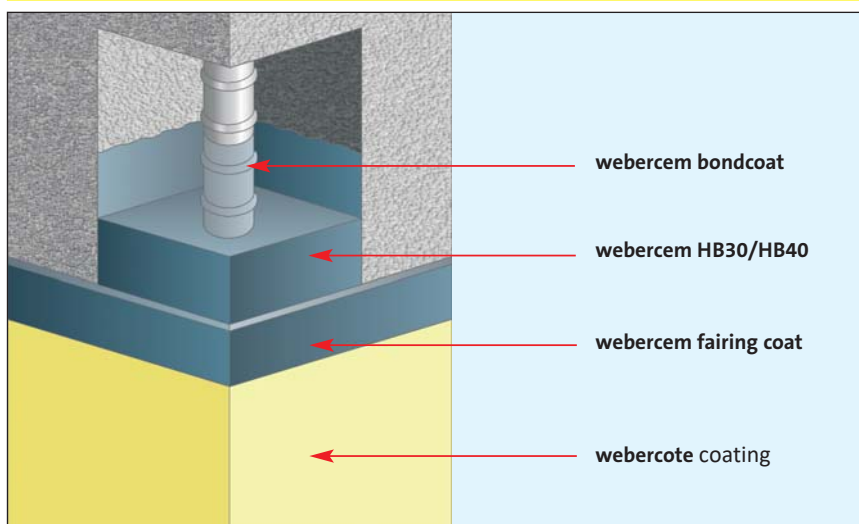


BS EN 1504 compliant concrete
patch repair system

webercem concrete repair system



Uses

- For patch repairs
- For the repair and protection of untrafficked reinforced concrete to:
 - Building structures
 - Lintels
 - Columns
 - Soffits
 - Beams
 - Precast units
 - Highway structures
 - Bridge abutments
 - Parapets
 - Columns
 - Bridge soffits

About this product

The **webercem concrete repair system** is a pre-batched, multi component system based on polymer-modified Portland cement mortars and coatings based on acrylic resins.

The components of this System have been specially formulated to comply with the requirements of BS EN 1504 parts 2 and 3 for protective coatings and concrete repair mortars.

Features and benefits

- ▲ **webercem system** contains products for priming, high-build repair, levelling treatments and high-performance coatings
- ▲ The components of this system have been specially formulated to comply with the requirements of BS EN 1504 parts 2 and 3 for protective coatings and concrete repair mortars
- ▲ **webercem system** has a proven track record demonstrating its performance
- ▲ Re-introduces alkalinity to reinforced concrete repair areas
- ▲ Increases durability of reinforced concrete against carbonation and chloride ingress

System components

Bonding agents	webercem bondcoat
Polymer-modified mortars	webercem HB30 webercem HB40
Levelling mortars	webercem fairing coat
Performance coatings	webercote smooth webercote EC
Associated products	webercote primer

Constraints

- ▲ **webercote EC** is not suitable for buildings required to comply with fire regulations such as Building Regulations Approved Document B.
- ▲ **webercote smooth** is only to be used below 18m in height for England/Wales and 11m in Scotland when requiring to meet fire regulations such as Building Regulations Approved Document B.

webercem concrete repair system

webercem HB30 and HB40

Single-component, high-build polymer-modified repair mortars for replacing defective concrete.

Both mortars are Class R3 mortars to BS EN 1504-3.

Once mixed with water, each product can be applied by hand by compacting on to tacky **webercem bondcoat** and finished with a wooden or plastic float.

Supplied in 20 kg bags.

webercem fairing coat

A single-component, polymer-modified levelling mortar used to prevent ghosting of concrete repairs through decorative finishes.

Once mixed with water, the product is applied by hawk and trowel and finished with a damp sponge.

Supplied in 25 kg bags.

webercote coatings

Single-component, acrylic anti-carbonation coatings for the long term protection of existing concrete and new repairs.

Available in pigmented smooth, and elastomeric versions.

webercote coatings are applied by brush, roller or airless spray in two coats. If stabilisation of the concrete is required prior to application, the surface should be treated using **webercote primer**.

Supplied in 12.5 kg pails.

Yield

webercem bondcoat

Coverage is approximately 5 kg per m².

webercem HB30

Yield is approximately 16 litres per 20 kg bag or 0.5 m² at 30 mm thickness.

webercem HB40

Yield is approximately 15 litres per 20 kg bag or 0.5 m² at 30 mm thickness.

webercem fairing coat

Yield is approximately 13 litres per 25 kg bag depending on water addition. This equates to approximately 6.5 m² per bag at 2 mm thickness.

webercote coatings

The coverage of **webercote** coatings will vary depending on the type of substrate and the surface porosity. The following is a guide for brush or roller application on to smooth surfaces.

Product smooth EC

webercote primer

Coverage

20 m²/pail in two coats

9 m²/pail in two coats

7 to 10 m²/litre/coat

Health and safety

webercem powder materials (bondcoat, HB30/40, fairing coat)

Contain cement. (Contain chromium (VI). May produce an allergic reaction). Harmful by inhalation. Irritating to eyes and skin. Keep out of the reach of children. In case of contact with eyes, .rinse immediately with plenty of water and seek medical help. After contact with skin, wash immediately with plenty of soap and water. Wear suitable protective clothing, gloves and eye/face protection,

webercote coatings and webercote primer

Essentially non-hazardous. These are difficult to remove when set. Therefore, although essentially non-hazardous, they should not be allowed to come in contact with skin. Operatives are advised to wear, protective clothing and gloves. The coatings can be used in confined spaces but ventilation is essential to avoid prolonged drying. If product enters the eyes, wash immediately with copious amounts of clean water and if discomfort continues seek medical advice.

For further details on safe handling, please refer to the relevant Material Safety Data Sheet.

Technical services

Weber's Customer Services Department has a team of experienced advisors available to provide on-site advice both at the specification stage and during application. Detailed specifications can be provided for specific projects or more general works. Site visits and on-site demonstrations can be arranged on request.

Technical helpline

Tel: 01525 718877

e-mail: technical@netweber.co.uk

Sales enquiries

Weber products are distributed throughout the UK through selected stockists and distributors. Please contact the relevant Customer Services Team below for all product orders and enquiries.

UK and Ireland

Tel: 01525 718877

e-mail: sales@netweber.co.uk

Saint-Gobain Weber

Dickens House, Enterprise Way, Maulden Road, Flitwick, Bedford MK45 5BY, UK
Tel: 01525 718877 e-mail: mail@netweber.co.uk www.uk.weber

To the best of our knowledge and belief, this information is true and accurate, but as conditions of use and any labour involved are beyond our control, the end user must satisfy himself by prior testing that the product is suitable for his specific application, and no responsibility can be accepted, or any warranty given by our Representatives, Agents or Distributors. Products are sold subject to our Standard Conditions of Sale and the end user should ensure that he has consulted our latest literature.