

weberwall brick internal system

Fast fix, lightweight brick finish

- * For new build, MMC or refurbishment projects
- * For internal use
- * Lightweight - 1 sheet of 20 bricks equal to the weight of 1 house brick

About this product

weberwall brick is a mineral brick finish, formulated from 95% minerals bound in cross-linked polymers to form a fast fix brick system. The system is fully flexible while allowing existing wall systems to freely breathe beneath its surface.

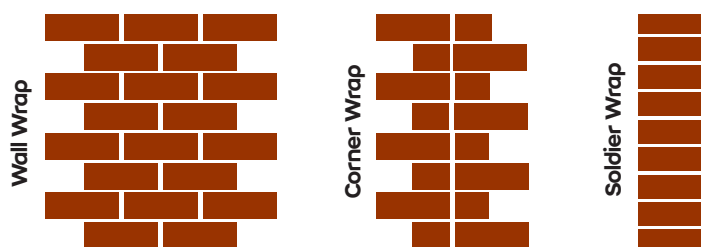
Features and benefits

- Fast fix – over 3 times faster than traditional brick slips
- Reduces specialist labour required on site
 - Reduces labour costs
 - Increases available labour
- Lightweight
- No lime or cement used in **weberwall brick** material – eliminates efflorescent lime bloom
- Range of colours and textures available
- Breathable – allowing the substrate to breathe
- 10 year product guarantee

Uses

For creating a realistic brick finish across a range of different applications and substrates.

There are 3 types of **weberwall brick** wrap



Applications

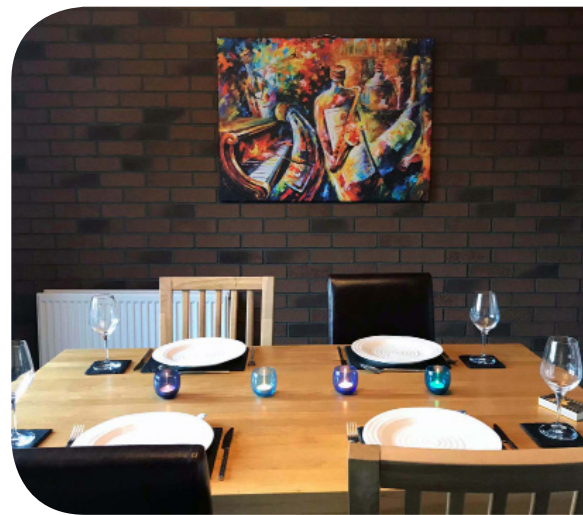
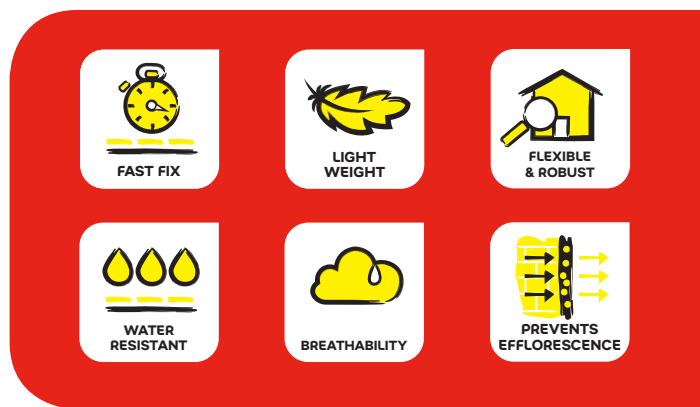
- Interior refurbishment and fit-out

Substrates

- Sound and suitably prepared internal plaster
- Internal cement render
- Concrete
- Ceramic tiles
- Wall boards: Fibre/cement, plywood, plasterboard

Things to consider

- Do not use in temperatures below 5°C or above 30°C
- Do not use within 300mm of an open flame or heat source
- As with traditional brick, to avoid colour banding, it is recommended that different packs and batches of **weberwall brick** are mixed on site.



weberwall brick internal adhesive

Uses

A rapid-setting, flexible, low-dust, cement-based adhesive for fixing weberwall brick to most internal building substrates.

Product data

Open time	10 minutes
Pot life	30 minutes
Set time	2 hours
Temperatures	5°C - 35°C for application -10°C - 100°C when set

* Note: These setting times are quoted at 20°C and are humidity dependent.

Preparation

All surfaces should be clean, dry, sound, and free from grease, dust or any other contaminating barrier. Unsound areas should be made good before applying a **weberwall brick** system. Flaky or peeling layers should be removed. Porous or dusty surfaces should be primed using **weber PR360** and allowed to dry.

Mixing

Gradually add approximately 4 parts of powder to 1 part of clean water (measured by volume), and mix to a smooth workable, stiff paste (adhering **weberwall brick** typically requires 3.4 litres of water per 20kg of adhesive). Use within 30 minutes of mixing. Do not attempt to extend the pot life by adding more water.

Application/Instructions for use

Surface	Application notes
Internal traditional cement render including weberend OCR	On new render allow at least 3 to 7 days for curing before applying weberwall . Priming with weber PR360 will be required to control suction.
Concrete	Allow at least 7 weeks before applying weberwall onto new concrete. Surface should be clean and free from laitance and release agents.

Existing ceramic tiles	Ensure that the substrate is strong enough to take the weight of extra weberwall and that the surface is free from any wax or polish.
Plaster walls	Leave plaster for at least 4 weeks before applying weberwall . It is important that the surface is sealed by repeatedly coating with weber PR360 .
Wall boards: Fibre/cement, plywood, plasterboard	Ensure boards are rigidly supported, clean, dry and free from dust. Plasterboard should be thoroughly primed with weber PR360 as should the back face and edges of plywood.

Do not use if the temperature is below, or likely to fall below, 5°C. Apply the adhesive onto the substrate using a suitable notched trowel.

Leave for at least 2 hours before pointing. Longer is required at lower temperatures or when adhering onto impervious or sealed surfaces.

Allowing for movement

Flexible joints should be incorporated to allow for slight movements due to change in temperature, humidity. Existing movement joints or changes in background material should be reflected through the **weberwall** system.

Coverage

Nominal thickness	Coverage per bag
5mm	3m ²

* Note: These estimates take no account of wastage.

weberwall brick pointing mortar

Uses

A coloured pointing mortar for use internally and externally as part of the **weberwall brick** system.

Preparation

All surfaces must be sound, clean, dry and free from any material which may impair adhesion. Scaffolding

must be independently ties to allow uninterrupted application. Any faults in the structure, particularly those which may lead to moisture penetration, must be rectified.

Mixing

Mix **weberwall brick pointing mortar** to a workable consistency by adding 5-5.5 litres of clean water. To ensure colour consistency, the materials for complete and adjoining panels should be of the same batch number or be thoroughly mixed together before use.

Application

Apply the pointing mortar carefully to the joints on the weberwall brick system using an adapted peristaltic pump or a mortar pointing gun. Fill the joint with mortar in a progressive sequence and then finish with a brick pointing tool. Once partially set, brush over the work with a soft bristle brush to remove any excess.

Coverage

One bag of **weberwall brick pointing mortar** will typically point 15m² of **weberwall brick**. Note: these estimates take no account of wastage and will vary according to nominal thickness.

Do not apply

- If frost is forecast within 24 hours of use
- In damp/wet conditions
- In temperatures below 5°C or above 30°C
- On elevations in direct sunlight or where the substrate is hot

Storage and shelf life

When stored unopened in a dry place at temperatures above 5°C, shelf life is 12 months from date of manufacture.

Installation manual

A comprehensive installation guide for the **weberwall brick** system is available. If you require a copy please contact the Weber technical team at: technical@netweber.co.uk.

Saint-Gobain Weber
Dickens House, Enterprise Way
Maulden Road, Flitwick, Bedford, MK45 5BY

+44 (0) 1525 718877
technical@netweber.co.uk
www.uk.weber
[@SGWeberUK](https://www.instagram.com/SGWeberUK)

To the best of our knowledge and belief, this information is true and accurate, but as conditions of use and any labour involved are beyond our control, the end user must satisfy themselves by prior testing that the product is suitable for their specific application, and no responsibility can be accepted, or any warranty given by our Representatives, Agents or Distributors. Products are sold subject to our Standard Conditions of Sale and the end user should ensure that they have consulted our latest literature.

