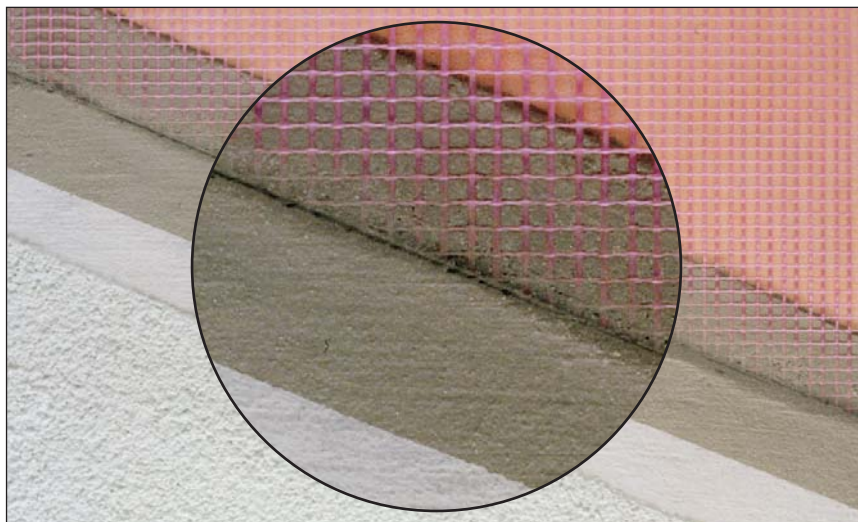


A polymer-modified dry powder cement-based render mortar

weberend LAC



About this product

weberend LAC is a low density, polymer-modified dry powder cement-based mortar. This product forms part of a number of approved insulation systems.

Technical data

External wall insulation systems – webertherm XM

Insulation Board	Reinforcement	Fixing	1st Coat	2nd Coat	Finish
Specified insulation board*	Meshcloth	Mechanical or mechanical and weberend LAC	weberend LAC	If required weberend PTC	Dry-dash or Decorative finish with weber PR310 primer

Multi-coat render systems - weberend MT on panel background

First Layer	Reinforcement	Fixing	1st Coat	2nd Coat	Finish
N/A	Meshcloth	N/A	weberend LAC	N/A	weberplast TF or webersil TF or webermineral TF with weber PR310 primer

Multi-coat render systems - weberend MT on masonry background

First Layer	Reinforcement	Fixing	1st Coat	2nd Coat	Finish
weberend POC (levelling coat)	Meshcloth	N/A	weberend LAC	N/A	weberplast TF or webersil TF or webersil P with weber PR310 primer

* Contact the Weber Specification team to request a specification. For use over 11m or for multi-occupancy buildings Weber will only specify MFD insulation.

Uses

- Bedding coat for meshcloth systems

When used in strict accordance with manufacturer's instructions and within an appropriate system, **Weber** renders will have a minimum life of 10 years.

Constraints

The quality of application of this material depends on suitable operative skills and product familiarity.

Restrictions on weather conditions during application and curing must be respected.

Sound trade practices and printed instructions must be followed.

Good access and appropriate protection must be provided.

Features and benefits

- ▲ Low mass for reduced shear load
- ▲ Polymer modified for high bond strength
- ▲ Factory batched for consistency
- ▲ Practical benefits of smooth application, speed and economy
- ▲ Technical support from a Quality Assured company
- ▲ Established track record in varying climatic conditions
- ▲ Forms part of a number of approved insulation systems



WEBERTHERM XM
External Wall Insulation
System
CERT Nos. 06/0260, 09/0338

weberend LAC

Mixing and application

Mix **weberend LAC** by adding clean water only to achieve a thick creamy consistency.

Adhesive coat

Coat the insulation boards with the adhesive to a thickness of about 2 – 3 mm and lay in the meshcloth. Once the initial coat has started to 'take-up', apply a second layer of adhesive mortar to produce a sandwich approximately 6 mm thick totally encapsulating the meshcloth.

Top Coat: lightly comb scratch to achieve a good mechanical key.

Synthetic finish: sponge finish to achieve a flat surface

Spillages and stains are difficult to remove so:

- protect vulnerable areas thoroughly
- mix mortar in plastic containers using a paddle mixer to facilitate cleaning
- don't mix too much material at one time
- wear protective clothing.

Good practice

Do not apply:

- If frost is forecast within 24 hours of use
- In damp/wet conditions
- In temperatures below 5°C or above 30°C
- On elevations in direct sunlight or where the substrate is hot

Packaging

weberend LAC is packaged 3-ply 20 kg bags with batch code and description on the side.

Coverage

Use	Nominal thickness	Coverage
Meshcloth coat	6mm	6.5 kg/m ²

Storage and shelf life

When stored unopened in a dry place at temperatures above 5°C, shelf life is 12 months from date of manufacture.

Health and safety

Contains cement (Contains chromium (VI). May produce an allergic reaction). Harmful by inhalation. Irritating to eyes and skin. Keep out of the reach of children. In case of contact with eyes, rinse immediately with plenty of water and seek medical help. After contact with skin, wash immediately with plenty of soap and water. Wear suitable protective clothing, gloves and eye/face protection.

For further information, please request the Material Safety Data Sheet for this product.

Technical services

Weber's Customer Services Department has a team of experienced advisors available to provide on-site advice both at the specification stage and during application. Detailed specifications can be provided for specific projects or more general works. Site visits and on-site demonstrations can be arranged on request.

Technical helpline

Tel: 01525 718877
e-mail: technical@netweber.co.uk

Sales enquiries

Weber products are distributed throughout the UK through selected stockists and distributors. Please contact the relevant Customer Services Team below for all product orders and enquiries.

UK and Ireland

Tel: 01525 718877
Fax: 0800 014 2995
e-mail: sales@netweber.co.uk

Saint-Gobain Weber

Dickens House, Enterprise Way, Maulden Road, Flitwick, Bedford MK45 5BY, UK
Tel: 01525 718877 Fax: 0800 014 2995 e-mail: mail@netweber.co.uk
www.uk.weber

To the best of our knowledge and belief, this information is true and accurate, but as conditions of use and any labour involved are beyond our control, the end user must satisfy himself by prior testing that the product is suitable for his specific application, and no responsibility can be accepted, or any warranty given by our Representatives, Agents or Distributors. Products are sold subject to our Standard Conditions of Sale and the end user should ensure that he has consulted our latest literature.