

# weberend MT system applied to Glasroc X sheathing board

## Exterior wall façade system for timber and steel framed buildings

- **weberend MT** system applied to 12.5mm sheathing board: 2400 x 1200mm
- BBA approved system
- Ideal for timber/steel frame applications

### About this product

The **weberend MT** system is suitable for application onto timber or steel frame construction with a Glasroc X sheathing board background, finished with a choice of textured decorative finishes in a wide range of colours. It offers a high degree of crack resistance, weather protection and fire performance.

Glasroc X is a high performance sheathing board approved for use as part of the **weberend MT** system. The system is BBA certified for use as a ventilated and drained exterior wall façade system on both timber and steel framed buildings.

The system render base coat is polymer-modified, which helps it to retain some flexibility. Mesh reinforcement between the two base coat layers provides extra impact resistance.

The render system can be finished with **webersil TF** or **weberplast TF**, light textured finishes or **weberwall brick** our brick effect system.



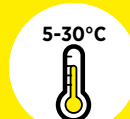
**WEATHER  
RESISTANT**



**BBA APPROVED  
SYSTEM**



**up to  
A2 REACTION  
TO FIRE**



**APPLICATION  
TEMPERATURE**



**COVERAGE PER  
BOARD**



### Features and benefits

- BBA approved system, [BBA certificate number 20/5790](#)
- Allows previously uneven masonry substrates to be rendered and gives a high level of crack resistance
- Wide choice of colours and textures available, including brick effect
- Lightweight and easy to handle sheathing board
- Glasroc X sheathing board is weather resistant and resists mould and UV light
- Glasroc X sheathing boards can be recycled - as long as the board has minimal contamination from non-gypsum materials
- A2 reaction to fire when finished with **webersil TF** or **weberwall brick**, B reaction to fire when finished with **weberplast TF**

## Uses

- As a ventilated and drained exterior wall façade system on both timber and steel framed buildings
- Suitable for use below 7.2m in height. Please refer to section 6 of the BBA certificate for details on wind load resistance
- Suitable for use in exposure zones up to and including 'severe' wind driven rain - refer to 9.1 of BBA certificate for details

## Installation

For installation instructions for your system specification please refer to the relevant technical datasheet.

System component	Datasheets
Glasroc X sheathing board	<a href="#">Click here</a>
weberend LAC rapid	<a href="#">Click here</a>
weberend LAC	<a href="#">Click here</a>
webersil TF	<a href="#">Click here</a>
weberplast TF	<a href="#">Click here</a>
weberwall brick external adhesive	<a href="#">Click here</a>
weberwall brick	<a href="#">Click here</a>
weberwall brick pointing mortar	<a href="#">Click here</a>

## Fixings

Dedicated fixings are required to fix Glasroc X boards to the frame

Description	Frame type	Centres
42mm stainless steel, self-drilling screw for Glasroc X (Timber frame)	Timber frame only	200mm
25mm self-drilling screw for Glasroc X (Steel frame)	Steel frame only	200mm

Note: Fixing pattern to be determined by ultimate wind load. A change in fixing pattern may be required. The above screws are not suitable for fixing into aluminium frame

## Coverage

System component	Use	Coverage (per unit)
Glasroc X sheathing board	Background for <b>weberend MT</b> system	2.88m <sup>2</sup>
<b>weberend LAC rapid</b> or <b>weberend LAC</b>	Meshcloth coat / basecoat	3m <sup>2</sup>
<b>weber standard mesh cloth</b>	Reinforcement mesh	50m <sup>2</sup>
<b>weber PR310</b>	Primer	40m <sup>2</sup>
<b>webersil TF</b>	Textured render finish	5.4m <sup>2</sup>
<b>weberplast TF</b>	Textured render finish	5.4m <sup>2</sup>
<b>weberwall brick external adhesive</b>	Meshcloth coat / basecoat	3m <sup>2</sup>
<b>weberwall brick</b>	Brick effect finish	3m <sup>2</sup> (wall wrap)
<b>weberwall brick pointing mortar</b>	Pointing mortar	15m <sup>2</sup>

Note: These estimates take no account of wastage

## Do not apply

- If frost is forecast within 24 hours of use
- In damp/wet conditions
- In temperatures below 5°C or above 30°C
- On elevations in direct sunlight or where the substrate is hot

## Storage and shelf life

When stored unopened in a dry place at temperatures above 5°C, shelf life of Weber basecoats and render finishes is 12 months from date of manufacture printed on the side of the bag/bucket.

Boards should be stored on a firm, flat and level surface. If the boards are temporarily stored outside they should be kept clear of the ground and securely covered with an anchored polythene sheet or tarpaulin to protect from dampness and inclement weather.

## Health & Safety

For Health & safety information please request the relevant Material Safety Data Sheet from Weber.

For technical advice phone: 01525 718877 or email [technical@netweber.co.uk](mailto:technical@netweber.co.uk)

## Technical data

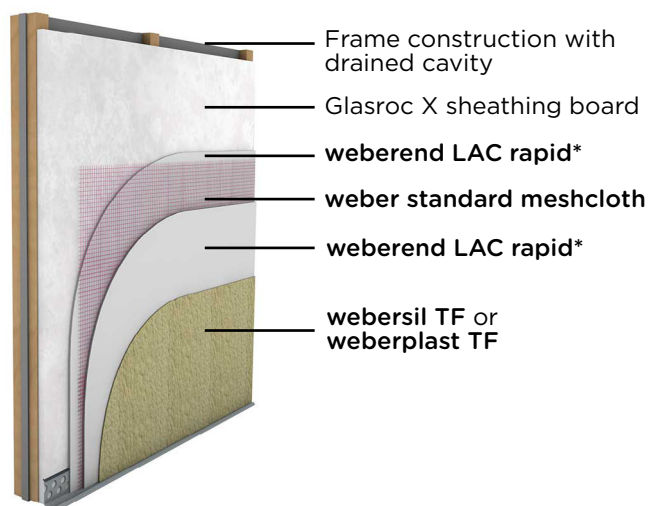
### weberend MT system applied to Glasroc X sheathing board with textured render finish

Board	1st pass	Reinforcement	2nd pass	Primer	Finish
Glasroc X sheathing board	<b>weberend LAC rapid</b> or <b>weberend LAC</b>	<b>weber standard meshcloth</b>	<b>weberend LAC rapid</b> or <b>weberend LAC</b>	<b>weber PR310</b> (only required if <b>weberend LAC</b> is used)	<b>webersil TF</b> or <b>weberplast TF</b>

### weberend MT system applied to Glasroc X sheathing board with brick effect finish

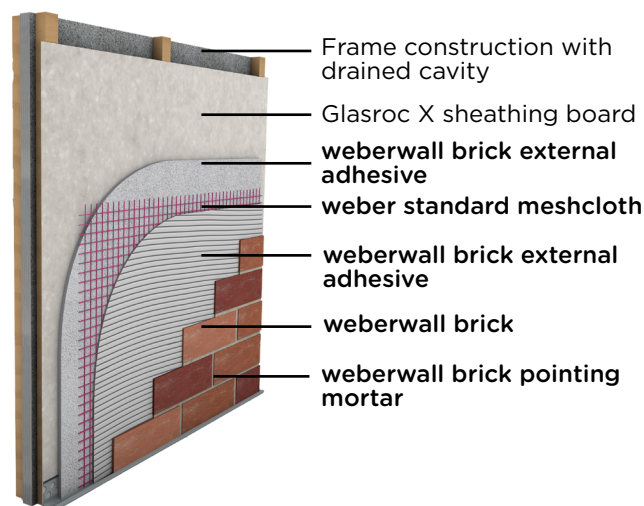
Board	1st pass	Reinforcement	2nd pass	Finish
Glasroc X sheathing board	<b>weberwall brick external adhesive</b>	<b>weber standard meshcloth</b>	<b>weberwall brick external adhesive</b>	<b>weberwall brick &amp; weberwall brick pointing mortar</b>

#### weberend MT system applied to Glasroc X sheathing board with textured render finish



\*If **weberend LAC** is specified, **weber PR310** primer must be used before application of the decorative finish

#### weberend MT system applied to Glasroc X sheathing board with brick effect finish



Designers should refer to the relevant building regulations and guidance for detailed conditions of use, in respect to fire performance, cavity barriers, service penetrations and combustibility limitations for other materials and components used in the overall wall construction for example thermal insulation. Cavity barriers must be incorporated as required under the notional Building Regulations although not block the essential ventilation and drainage pathways. Further guidance can be found within BRE Report BR 135 2013

**Saint-Gobain Weber**  
Dickens House, Enterprise Way,  
Maulden Road, Flitwick,  
Bedford, MK45 5BY

+44 (0) 1525 718877

✉ [technical@netweber.co.uk](mailto:technical@netweber.co.uk)

🌐 [www.uk.weber](http://www.uk.weber)

📱 @SGWeberUK

To the best of our knowledge and belief, this information is true and accurate, but as conditions of use and any labour involved are beyond our control, the end user must satisfy themselves by prior testing that the product is suitable for their specific application, and no responsibility can be accepted, or any warranty given by our Representatives, Agents or Distributors. Products are sold subject to our Standard Conditions of Sale and the end user should ensure that they have consulted our latest literature.

REV. 03/03/23