

Saint-Gobain Construction Products UK Limited t/a Saint-Gobain Weber

Dickens House
Enterprise Way
Flitwick
Bedfordshire MK45 5BY

Tel: 01525 718877 Fax: 0800 0142995

e-mail: mail@netweber.co.uk

website: www.uk.weber



Agrément Certificate

91/2691

Product Sheet 1

WEBER EXTERNAL WALL INSULATION SYSTEMS

WEBERTHERM XM EXTERNAL WALL INSULATION SYSTEM

This Agrément Certificate Product Sheet⁽¹⁾ relates to the Webertherm XM External Wall Insulation System, comprising grey expanded polystyrene (EPS) or phenolic (PHS) insulation boards, mechanically fixed, with supplementary adhesive where required (adhesive is compulsory when using phenolic insulation), and reinforced basecoat, primer and render finishes. The system is suitable for use, with height restrictions, on the outside of external masonry walls in new or existing domestic and non-domestic buildings.

(1) Hereinafter referred to as 'Certificate'.

CERTIFICATION INCLUDES:

- factors relating to compliance with Building Regulations where applicable
- factors relating to additional non-regulatory information where applicable
- independently verified technical specification
- assessment criteria and technical investigations
- design considerations
- installation guidance
- regular surveillance of production
- formal three-yearly review.

KEY FACTORS ASSESSED

Thermal performance — the system can be used to improve the thermal performance of external masonry walls and can contribute to satisfying the requirements of the national Building Regulations (see section 6).

Strength and stability — the system can adequately resist wind loads and has sufficient resistance to impact damage (see section 7).

Behaviour in relation to fire — the system can have a B-s1, d0 or B-s2, d0 reaction to fire classification in accordance with BS EN 13501-1 : 2018, depending on the system configuration, and its use is restricted (see section 8).

Risk of condensation — the system can contribute to limiting the risk of interstitial and surface condensation (see section 11).

Durability — when installed and maintained in accordance with the Certificate holder's recommendations and the terms of this Certificate, the system will remain effective for at least 30 years. The durability can be extended to 60 years by using specific fixings, and supplementary adhesive, and by following a planned inspection and maintenance schedule, as described in sections 12 and 13.

The BBA has awarded this Certificate to the company named above for the system described herein. This system has been assessed by the BBA as being fit for its intended use provided it is installed, used and maintained as set out in this Certificate.

On behalf of the British Board of Agrément

Date of Third issue: 3 December 2020

Originally certificated on 25 November 1991

Hardy Giesler
Chief Executive Officer



The BBA is a UKAS accredited certification body – Number 113.

The schedule of the current scope of accreditation for product certification is available in pdf format via the UKAS link on the BBA website at www.bbacerts.co.uk

Readers MUST check the validity and latest issue number of this Agrément Certificate by either referring to the BBA website or contacting the BBA directly.

Any photographs are for illustrative purposes only, do not constitute advice and should not be relied upon.

British Board of Agrément

Bucknalls Lane
Watford
Herts WD25 9BA

©2020

tel: 01923 665300
clientservices@bbacerts.co.uk
www.bbacerts.co.uk

Regulations

In the opinion of the BBA, the Webertherm XM External Wall Insulation System, if installed, used and maintained in accordance with this Certificate, can satisfy or contribute to satisfying the relevant requirements of the following Building Regulations (the presence of a UK map indicates that the subject is related to the Building Regulations in the region or regions of the UK depicted):



The Building Regulations 2010 (England and Wales) (as amended)

| | | |
|---------------------|-----------------|--|
| Requirement: | A1 | Loading |
| Comment: | | The system can sustain and transmit wind loads to the substrate wall. See sections 7.1 to 7.16 of this Certificate. |
| Requirement: | B4(1) | External fire spread |
| Comment: | | The system is restricted by this Requirement. See sections 8.1 to 8.4 of this Certificate. |
| Requirement: | C2(b) | Resistance to moisture |
| Comment: | | The system provides a degree of protection against rain ingress. See section 10.1 of this Certificate. |
| Requirement: | C2(c) | Resistance to moisture |
| Comment: | | The system can contribute to minimising the risk of interstitial and surface condensation. See sections 11.2 and 11.4 of this Certificate. |
| Requirement: | L1(a)(i) | Conservation of fuel and power |
| Comment: | | The system can contribute to satisfying this Requirement. See sections 6.1 and 6.2 of this Certificate. |
| Regulation: | 7(1) | Materials and workmanship |
| Comment: | | The system is acceptable. See sections 13.1 and 13.2 and the <i>Installation</i> part of this Certificate. |
| Regulation: | 7(2) | Materials and workmanship |
| Comment: | | The system is restricted by this Regulation. See sections 8.1 to 8.4 of this Certificate. |
| Regulation: | 26 | CO₂ emission rate for new buildings |
| Regulation: | 26A | Fabric energy efficiency rates for new dwellings (applicable to England only) |
| Regulation: | 26A | Primary energy consumption rates for buildings (applicable to Wales only) |
| Regulation: | 26B | Fabric performance values for new dwellings (applicable to Wales only) |
| Comment: | | The system can contribute to satisfying these Regulations; however, compensating fabric/services measures may be required. See sections 6.1 and 6.2 of this Certificate. |



The Building (Scotland) Regulations 2004 (as amended)

| | | |
|--------------------|----------------|--|
| Regulation: | 8(1)(2) | Durability, workmanship and fitness of materials |
| Comment: | | The system can contribute to a construction satisfying this Regulation. See sections 12, 13.1 and 13.2 and the <i>Installation</i> part of this Certificate. |
| Regulation: | 9 | Building standards applicable to construction |
| Standard: | 1.1 | Structure |
| Comment: | | The system can sustain and transmit wind loads to the substrate wall. See sections 7.1 to 7.16 of this Certificate. |

| | | |
|-------------|-----------|--|
| Standard: | 2.6 | Spread to neighbouring buildings |
| Comment: | | The system is restricted by this Standard, with reference to clauses 2.6.4 ⁽¹⁾⁽²⁾ , 2.6.5 ⁽¹⁾ and 2.6.6 ⁽²⁾ . See sections 8.1 to 8.3, 8.5 and 8.6 of this Certificate. |
| Standard: | 2.7 | Spread on external walls |
| Comment: | | The system is restricted by this Standard, with reference to clause 2.7.1 ⁽¹⁾⁽²⁾ . See sections 8.1 to 8.3, 8.5 and 8.6 of this Certificate. |
| Standard: | 3.10 | Precipitation |
| Comment: | | The system can contribute to a construction satisfying this Standard, with reference to clauses 3.10.1 ⁽¹⁾⁽²⁾ and 3.10.2 ⁽¹⁾⁽²⁾ . See section 10.1 of this Certificate. |
| Standard: | 3.15 | Condensation |
| Comment: | | The system can contribute to satisfying the requirements of this Standard, with reference to clauses 3.15.1 ⁽¹⁾⁽²⁾ , 3.15.4 ⁽¹⁾⁽²⁾ and 3.15.5 ⁽¹⁾⁽²⁾ . See sections 11.3 and 11.4 of this Certificate. |
| Standard: | 6.1(b) | Carbon dioxide emissions |
| Standard: | 6.2 | Buildings insulation envelope |
| Comment: | | The system can contribute to satisfying these Standards, with reference to clauses, or parts of, 6.1.1 ⁽¹⁾ , 6.1.2 ⁽¹⁾⁽²⁾ , 6.1.3 ⁽¹⁾⁽²⁾ , 6.1.6 ⁽¹⁾ , 6.1.10 ⁽²⁾ , 6.2.1 ⁽¹⁾⁽²⁾ , 6.2.3 ⁽¹⁾ , 6.2.4 ⁽²⁾ , 6.2.5 ⁽²⁾ , 6.2.6 ⁽¹⁾ , 6.2.7 ⁽¹⁾ , 6.2.8 ⁽²⁾ , 6.2.9 ⁽¹⁾⁽²⁾ , 6.2.10 ⁽¹⁾ , 6.2.11 ⁽¹⁾ , 6.2.12 ⁽²⁾ and 6.2.13 ⁽¹⁾⁽²⁾ . See sections 6.1 and 6.2 of this Certificate. |
| Standard: | 7.1(a)(b) | Statement of sustainability |
| Comment: | | The system can contribute to satisfying the relevant requirements of Regulation 9, Standards 1 to 6, and therefore will contribute to a construction meeting the bronze level of sustainability as defined in this Standard. In addition, the system can contribute to a construction meeting a higher level of sustainability as defined in this Standard, with reference to clauses 7.1.4 ⁽¹⁾⁽²⁾ [Aspect 1 ⁽¹⁾⁽²⁾ and 2 ⁽¹⁾], 7.1.6 ⁽¹⁾⁽²⁾ [Aspect 1 ⁽¹⁾⁽²⁾ and 2 ⁽¹⁾] and 7.1.7 ⁽¹⁾⁽²⁾ [Aspect 1 ⁽¹⁾⁽²⁾]. See section 6.1 of this Certificate. |
| Regulation: | 12 | Building standards applicable to conversions |
| Comment: | | Comments in relation to the system under Regulation 9, Standards 1 to 6, also apply to this Regulation, with reference to 0.12.1 ⁽¹⁾⁽²⁾ and Schedule 6 ⁽¹⁾⁽²⁾ . |

(1) Technical Handbook (Domestic).

(2) Technical Handbook (Non-Domestic).



The Building Regulations (Northern Ireland) 2012 (as amended)

| | | |
|-------------|-------|--|
| Regulation: | 23 | Fitness of materials and workmanship |
| Comment: | | The system is acceptable. See sections 13.1 and 13.2 and the <i>Installation</i> part of this Certificate. |
| Regulation: | 28(b) | Resistance to moisture and weather |
| Comment: | | The system provides a degree of protection against rain ingress. See section 10.1 of this Certificate. |
| Regulation: | 29 | Condensation |
| Comment: | | The system can contribute to minimising the risk of interstitial condensation. See section 11.4 of this Certificate. |
| Regulation: | 30 | Stability |
| Comment: | | The system can sustain and transmit wind loads to the substrate wall. See sections 7.1 to 7.16 of this Certificate. |
| Regulation: | 36(a) | External fire spread |
| Comment: | | The system is restricted by this Regulation. See sections 8.1 to 8.4 of this Certificate. |

| | | |
|-------------|--|-------------------------------------|
| Regulation: | 39(a)(i) | Conservation measures |
| Regulation: | 40 | Target carbon dioxide emission rate |
| Comment: | The system can contribute to satisfying these Regulations. See sections 6.1 and 6.2 of this Certificate. | |

Construction (Design and Management) Regulations 2015

Construction (Design and Management) Regulations (Northern Ireland) 2016

Information in this Certificate may assist the client, designer (including Principal Designer) and contractor (including Principal Contractor) to address their obligations under these Regulations.

See sections: 3 *Delivery and site handling* (3.1 and 3.3) and 12 *Maintenance and repair* of this Certificate.

Additional Information

NHBC Standards 2020

In the opinion of the BBA, the Webertherm XM External Wall Insulation System, if installed, used and maintained in accordance with this Certificate, can satisfy or contribute to satisfying the relevant requirements in relation to *NHBC Standards*⁽¹⁾, Part 6 *Superstructure*, Chapter 6.9 *Curtain walling and cladding*.

(1) There is a general requirement in *NHBC Standards 2020*, Chapter 6.9, for fire-retardant-treated EPS insulation to be used with the system in accordance with BS EN 13163 : 2012.

Technical Specification

1 Description

1.1 The Webertherm XM External Wall Insulation System comprises EPS or PHS insulation boards, mechanically fixed to the substrate wall, with supplementary adhesive where required⁽¹⁾ (with a minimum of 50% coverage of adhesive), reinforced basecoat and finishes (see Tables 1A and 1B).

(1) Supplementary adhesive is compulsory for the 60-year durability system and also when phenolic insulation is used.

| Table 1A Webertherm XM summary for the system utilising weberend LAC basecoat | | |
|---|---|---|
| Components | Option 1 | Option 2 |
| Supplementary adhesive | weberend LAC weberend LAC Rapid | weberend LAC weberend LAC Rapid |
| Insulation | webertherm EPS webertherm PHS | webertherm EPS webertherm PHS |
| Basecoat | weberend LAC | weberend LAC |
| Reinforcement | weber mesh | weber mesh |
| Top coat | weberend PTC | — |
| Primer | weber PR310 | weber PR310 |
| Finish | weber dry dash aggregate weberplast TF webersil TF webermineral TF | weberplast TF webersil TF webermineral TF |

Table 1B Webertherm XM summary for the system utilising weberwall brick external adhesive or weberend LAC Rapid basecoat⁽¹⁾

| Components | Option 1 | Option 2 (weberwall brick) | Option 3 |
|---------------------------------------|--|--|---|
| Supplementary adhesive ⁽²⁾ | weberend LAC weberend LAC Rapid | weberend LAC weberend LAC Rapid | weberend LAC weberend LAC Rapid |
| Insulation | webertherm EPS webertherm PHS ⁽¹⁾ | webertherm EPS webertherm PHS ⁽¹⁾ | webertherm EPS webertherm PHS ⁽¹⁾ |
| Basecoat | weberend LAC Rapid | weberwall brick external adhesive | weberend LAC Rapid |
| Reinforcement | weber mesh | weber mesh | weber mesh |
| Top coat | weberend PTC | — | — |
| Primer | weber PR310 | — | — |
| Finish | weber dry dash aggregate weberplast TF webersil TF webermineral TF | weberwall brick pointed with weberwall brick pointing mortar | weberplast TF webersil TF webermineral TF |

(1) Mechanically fixing through the reinforced basecoat with a minimum of 50% supplementary adhesive is the only permissible fixing method when using phenolic insulation.

(2) Supplementary adhesive is not required for the allowable dry fix configurations.

1.2 The system can be designed to achieve either a 30- or 60-year service life (see Figure 1). Mechanical fixings are applied through the insulation boards for the 30-year system, or through the reinforcing mesh and insulation boards for 30-year or 60-year system, to the external surface of the substrate wall (see sections 1.3 and 1.4).

1.3 The system configurations, by method of fixing, covered under this Certificate include:

- all system combinations that are mechanically fixed through the insulation only (that is, not through the mesh and insulation) and use supplementary adhesive (minimum of 50%) – 30-year durability systems only. Phenolic insulation can only be used with LAC basecoat
- all system combinations that are mechanically fixed through mesh/insulation and use supplementary adhesive (minimum 50%)
- dry-fixed system, 30-year durability system only; the permissible insulation thicknesses (EPS only) along with the combinations of the basecoat, finishes and permissible fixings, are shown below. The system may be fixed through the insulation only or through the mesh/insulation:
 - 80 to 160 mm insulation thicknesses, basecoats and finishes
 - the EJOT H1 eco fixing must be used.

30-year durability (see Figure 1)

1.4 After the boards have been secured to the wall with mechanical fixings, and supplementary adhesive where required, the basecoat is trowel-applied to the specified thickness, followed by the reinforcing mesh, which is fully embedded within the basecoat by applying a second pass of basecoat 'wet on wet'. After the reinforced basecoat has cured, primer (if required) is applied followed by the finish. For the Weberwall brick system, the installation procedure is described in section 16. For the system fixed through the reinforced basecoat, the installation procedure for 60-years' durability in section 1.4 should be followed, but the use of adhesive is optional for the EPS based system.

60-year durability (see Figure 1)

1.5 After the boards have been secured to the wall with supplementary adhesive (minimum 50%) and two mechanical fixings through each insulation board, the basecoat is trowel-applied to the specified thickness, followed by the reinforcing mesh, which is fully embedded within the basecoat. While the basecoat is still wet, mechanical fixings are applied through the mesh and insulation boards into the substrate, before mesh patches are applied over the fixing

heads and fully embedded. Further basecoat is then used, in order to achieve the same thickness as that applied over the insulation boards for a 30-year durability, when measured from the top of the fixing plate. After the reinforced basecoat has cured, primer (where required) is applied followed by the finish. For the Weberwall brick system the installation procedure is described in section 16.

1.6 Additionally, for the 60-year durability system, the requirements of sections 1.7 (mechanical fixings), sections 4.13 and 4.14 must be satisfied.

1.7 The system comprises:

Adhesive (supplementary)

- weberend LAC — a polymer-modified cementitious basecoat mortar, supplied as a powder to which 5 litres of clean water is added. Applied at a coverage of $3 \text{ kg}\cdot\text{m}^{-2}$
- weberend LAC Rapid — a polymer-modified cementitious basecoat mortar, supplied as a powder to which 5 litres of clean water is added. Applied at a coverage of $3 \text{ kg}\cdot\text{m}^{-2}$

Insulation⁽¹⁾

- webertherm EPS Grey — expanded polystyrene (EPS 70E) insulation boards, measuring 1200 by 600 mm, in a range of thicknesses between 80 and 200 mm, with a nominal density of $15 \text{ kg}\cdot\text{m}^{-3}$, a compressive strength of $70 \text{ kN}\cdot\text{m}^{-2}$, and a minimum tensile strength of 100 kPa. Boards are manufactured to comply with the requirements of BS EN 13163 : 2012 and classified as Euroclass E in accordance with BS EN 13501-1 : 2018
- webertherm PHS (phenolic) — insulation boards measuring 1200 by 600 mm in a range of thicknesses between 30 and 120 mm⁽²⁾, with a nominal density of $35 \text{ kg}\cdot\text{m}^{-3}$, a minimum compressive strength of $120 \text{ kN}\cdot\text{mm}^{-2}$ and a tensile strength to perpendicular to the faces of $80 \text{ kN}\cdot\text{mm}^{-2}$. The boards are manufactured to comply with the requirements of BS EN 13166 : 2012, and classified as Euroclass C-s2, d0 in accordance with BS EN 13501-1 : 2018

(1) For Declared thermal conductivity values (λ_D) see Table 3 of this Certificate.

(2) Insulation thicknesses of <80 mm are also available, which are used in reveals.

Mechanical fixings

- mechanical fixings⁽¹⁾⁽²⁾⁽³⁾ — fixing anchors with various lengths to suit the substrate and insulation thickness, approved and supplied by the Certificate holder, and selected from:
 - Fischer Termoz CS 8 — polypropylene with stainless steel or electro-galvanized screw
 - EJOT NT U⁽⁴⁾ — polyethylene, HDPE anchor sleeve with a stainless steel or electro-galvanized centre pin
 - EJOT STR U⁽⁴⁾ — polyethylene, HDPE anchor sleeve with a stainless steel or electro-galvanized centre screw
 - EJOT STR U 2G⁽⁴⁾ — polyethylene, HDPE anchor sleeve with a stainless steel or electro-galvanized centre screw
 - EJOT H1 eco⁽⁵⁾ — polyethylene, HDPE anchor sleeve with an electro-galvanized pin and a polyamide, PA GF 50 mounting plug

(1) Other fixings may be used provided they can be demonstrated to have equal or higher pull-out strength, plate diameter and plate stiffness characteristics than the fixing used for the tests in section 7 and provided that a steel pin or screw is used.

(2) The fixings must be surface mounted only, ie not embedded into the insulation.

(3) Polyethylene (HDPE), polyamide or polypropylene anchor sleeve with a stainless steel pin or screw to grades 1.4301 or 1.4401 to BS EN 10088-2 : 2014 are required in order to achieve a 60-year durability performance.

(4) Only these fixings are suitable for application where the system is fixed through minimum 80 mm thick EPS and minimum 30 mm thick phenolic insulation where the design pull-through resistance value of 184N and 193N apply, respectively (see section 7).

(5) EJOT H1 eco is the only fixing that can be used for the dry-fix system – see section 7.5; footnote (1), therefore, does not apply.

Basecoat

- weberend LAC — a polymer-modified cementitious basecoat mortar, supplied as a powder to which 5 litres of clean water is added. Applied in two passes at a coverage of $6.5 \text{ kg}\cdot\text{m}^{-2}$ and an overall thickness of 6 mm
- weberend LAC Rapid — a polymer-modified cementitious basecoat mortar, supplied as a powder to which 5 litres of clean water is added. Applied in two passes at a coverage of $6.5 \text{ kg}\cdot\text{m}^{-2}$ and an overall thickness of 6 mm
- weberwall brick external adhesive — a polymer-modified cementitious basecoat/adhesive mortar, supplied as a powder to which 5 litres of clean water is added. Applied in two passes at a coverage of $6.5 \text{ kg}\cdot\text{m}^{-2}$ and an overall thickness of 6 mm

Reinforcement

- weber mesh — a woven glass fibre reinforcing mesh (3.8 by 3.5 mm) with a polymer coating and a nominal weight of $160 \text{ g}\cdot\text{m}^{-2}$

Top coats

- weberend PTC — a factory-batched, polymer-modified cementitious mortar, supplied as a powder to which 5 litres of clean water is added. Applied at a coverage of $10 \text{ kg}\cdot\text{m}^{-2}$ to give a thickness of 6 to 8 mm. Used as a dash receiver and a top coat

Primer

- weber PR310 — a ready to use, white styrene-acrylic-resin-based emulsion containing fine filters and coalescing agent (see Tables 1A and 1B for compatibility with the system components). Applied at a coverage of $0.25 \text{ l}\cdot\text{m}^{-2}$

Finishes

Render finishes

- weberplast TF — an acrylic-bonded, textured render supplied as a paste containing aggregates of 1.5 mm. Applied at a coverage of $2.8 \text{ kg}\cdot\text{m}^{-2}$ to give a thickness of 1.5 mm. Available in a range of colours
- webersil TF — a silicone-bonded, textured render supplied as a paste containing aggregates of 1.5 mm. Applied at a coverage of $2.7 \text{ kg}\cdot\text{m}^{-2}$ to give a thickness of 1.5 mm. Available in a range of colours
- webermineral TF — a polymer-modified mineral finishing coat containing aggregates of 1.5 mm, requiring the addition of 3.4 to 4.4 litres of clean water per 20 kg bag. Applied at a coverage of $2.7 \text{ kg}\cdot\text{m}^{-2}$ to give a thickness of 1.5 mm. Available in a range of colours

Brick slip finish and pointing mortar

- weberwall brick — flexible mineral brick slips, typically supplied in standard size of dimensions 65 by 215 by 5 mm with a nominal weight of $6 \text{ kg}\cdot\text{m}^{-2}$ and are formed of a sheet comprising several brick-slips prepressed on glass fibre mesh-reinforcement. Available as straight brick-slips and corner brick-slips and in a range of colours
- weberwall brick pointing mortar — a polymer-modified, dry powder, cement based mortar for use with weberwall brick.

Dash aggregate finish

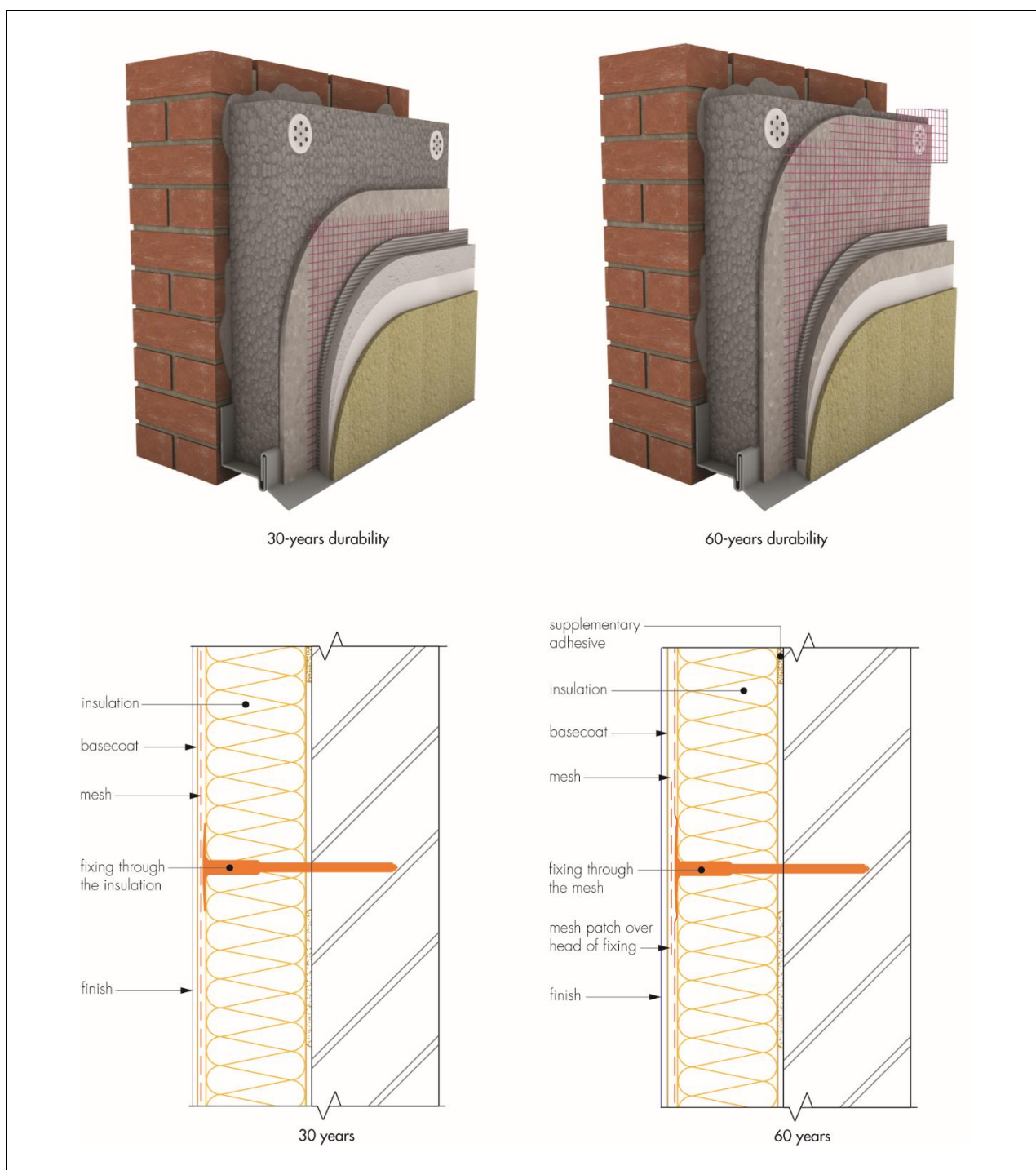
- weber Dry Dash Aggregate — sized up to 6 mm and available in a range of colours, applied direct to weberend PTC. Applied at a coverage of 10 to $15 \text{ kg}\cdot\text{m}^{-2}$.

1.8 Ancillary materials also used with the system, but outside the scope of this Certificate, are:

- a range of aluminium, PVC-U or stainless steel profiles⁽¹⁾, comprising:
 - base profile
 - edge profile
 - corner profile with optional PVC-U nosing
 - render stop profile
 - movement joint
 - expansion joint
- profile connectors and fixings
- fungicidal wash
- silicone sealant in accordance with BS EN ISO 11600 : 2003
- expansion foam — polyurethane foam used for filling gaps between insulation boards
- fire barriers.

(1) For the 60-year durability system, these profiles must be made of stainless steel (see section 13.2).

Figure 1 The Webertherm XM External Wall Insulation System



2 Manufacture

2.1 The system components are manufactured by the Certificate holder or bought in from suppliers, to an agreed specification.

2.2 As part of the assessment and ongoing surveillance of product quality, the BBA has:

- agreed with the manufacturer the quality control procedures and product testing to be undertaken
- assessed and agreed the quality control operated over batches of incoming materials
- monitored the production process and verified that it is in accordance with the documented process
- evaluated the process for management of nonconformities
- checked that equipment has been properly tested and calibrated

- undertaken to carry out the above measures on a regular basis through a surveillance process, to verify that the specifications and quality control operated by the manufacturer are being maintained.

2.3 The management system of Saint-Gobain Construction Products UK Limited t/a Saint-Gobain Weber has been assessed and registered as meeting the requirements of BS EN ISO 9001 : 2015 by BSI (Certificates FM 641234 and FM 01209).

3 Delivery and site handling

3.1 The system components are delivered to site in the packaging and quantities listed in Table 2. Each package carries the product identification and batch number.

| <i>Table 2 Component supply details</i> | |
|--|---|
| Component | Quantity and packaging |
| Insulation | Shrink-wrapped in polyethylene (on pallets) |
| weberend LAC adhesive and basecoat | 20 kg bags |
| weberend LAC Rapid adhesive and basecoat | 20 kg bags |
| weberwall brick external adhesive | 20 kg bags |
| weber mesh | 1 m wide by 50 m lengths |
| weberend PTC | 25 kg bags |
| weber PR310 | 10 litre containers |
| weber dry-dash aggregate | 25 kg bags |
| weberplast TF | 15 kg plastic pails |
| webersil TF | 15 kg plastic pails |
| webermineral TF | 20 kg bags |
| weberwall brick slips | boxed by manufacturer |
| weberwall brick pointing mortar | 25 kg bags |
| mechanical fixings | boxed by manufacturer, 100 per box |

3.2 The insulation must be stored on a firm, clean, level base, off the ground and under cover until required for use. Care must be taken when handling to avoid damage.

3.3 The insulation must be protected from prolonged exposure to sunlight, either by storing opened packs under cover or re-covering with opaque polythene sheeting. Care must be taken to avoid contact with solvents or materials containing volatile organic components. The boards must not be exposed to open flame or other ignition sources. Boards that become damaged, soiled or wet should be discarded.

3.4 The powder and paste components must be stored in dry conditions between 5 and 30°C, off the ground and protected from moisture. Contaminated materials should be discarded.

3.5 The primer and finishes should be stored in a safe area, under cover, and protected from excessive heat and frost at all times.

3.6 Bagged aggregate should be stored in a dry location.

Assessment and Technical Investigations

The following is a summary of the assessment and technical investigations carried out on the Webertherm XM External Wall Insulation System.

4 General

4.1 The Webertherm XM External Wall Insulation System, when installed in accordance with this Certificate, is satisfactory for use in reducing the thermal transmittance (U value) of external masonry or concrete walls of new or existing buildings. It is essential that the detailing techniques specified in this Certificate are carried out to a high standard if the ingress of water into the insulation is to be avoided and the full thermal benefit obtained from treatment with the system (eg the insulation must be protected by an overhang, and window sills should be designed and installed so as to direct water away from the building).

4.2 For improved thermal/carbon-emissions performance of the structure, the designer should consider additional/alternative fabric and/or services measures.

4.3 The system is for application to the outside of external walls of masonry, normal weight concrete, lightweight concrete, autoclaved concrete and no-fines concrete construction, on new or existing domestic and non-domestic buildings (with or without existing render) with height restrictions (see section 8). Prior to the installation of the system, wall surfaces should comply with section 14.

4.4 New walls subject to national Building Regulations should be constructed in accordance with the relevant recommendations of:

- BS EN 1992-1-1 : 2004 and its UK National Annex
- BS EN 1996-1-1 : 2005 and its UK National Annex
- BS EN 1996-2 : 2006 and its UK National Annex
- BS 8000-0 : 2014
- BS 8000-2.2 : 1990
- BS 8000-3 : 2001.

4.5 New walls not subject to regulatory requirements should also be built in accordance with the Standards identified in section 4.4.

4.6 Movement joints should be incorporated into the system in line with existing movement joints in the building structure and in accordance with the Certificate holder's recommendations for the specific installation.

4.7 The system will improve the weather resistance of a wall and provide a decorative finish. However, for existing buildings, it should only be installed where there are no signs of dampness on the inner surface of the wall other than those caused solely by condensation.

4.8 The effect of the system on the acoustic performance of a construction is outside the scope of this Certificate.

4.9 The fixing of sanitary pipework, plumbing, rainwater goods, satellite dishes, clothes lines, hanging baskets and similar items to the system is outside the scope of this Certificate (see section 4.10).

4.10 External pipework and ducts should be removed before installation, and alterations made to underground drainage to accommodate repositioning of the pipework to the finished face of the system. The Certificate holder may advise on suitable fixing methods, but these are outside the scope of this Certificate.

4.11 The designer should select a construction appropriate to the local wind-driven rain index, paying due regard to the design detailing, workmanship and materials to be used.

4.12 It is essential that the system is installed and maintained in accordance with the conditions set out in this Certificate.

4.13 The Webertherm XM External Wall Insulation System can achieve a service life of 60 years. The difference between a 30- and 60-year durability system is covered in sections 1.2 to 1.6, with the detailed installation procedure covered in section 16.

4.14 For the 60-year durability system, the insulation board adhesive must be used and the mechanical fixings must be applied through the reinforcing mesh. Additionally, the following components must be constructed from stainless steel grade 1.4301 or 1.4401 to BS EN 10088-2 : 2014:

- base profile and render stop end including the fixings. In addition, any other profile component which would remain exposed after the application of the finishing coat
- corner profile (if exposed after application of the system)
- pin or screw for mechanical fixings.

5 Practicability of installation

The system should only be installed by specialist contractors who have successfully undergone training and registration by the Certificate holder (see section 15).

Note: The BBA operates a UKAS-accredited Approved Installer Scheme for external wall insulation (non-mandatory); details of approved installer companies are included on the BBA's website (www.bbacerts.co.uk).

6 Thermal performance



6.1 Calculations of thermal transmittance (U value) should be carried out in accordance with BS EN ISO 6946 : 2017 and BRE Report BR 443 : 2006, using the declared thermal conductivity (λ_D) values of the insulations given in Table 3 of this Certificate.

Table 3 Declared thermal conductivity (λ_D) values and available thicknesses

| Insulation types | Insulation board thickness range (mm) | Thermal conductivity ($\text{W}\cdot\text{m}^{-1}\cdot\text{K}^{-1}$) |
|------------------------------|---------------------------------------|---|
| webertherm EPS 70 grey (032) | 30 to 200 | 0.032 |
| webertherm PHS | 30 to 40 | 0.021 |
| | 50 to 120 | 0.020 |



6.2 The U value of a completed wall will depend on the selected insulation type and thickness, the fixing method and type and number of fixings, and the insulating value of the substrate masonry and its internal finish. Calculated U values for sample constructions in accordance with the national Building Regulations are given in Tables 4 and 5 of this Certificate, and are based on the thermal conductivity values given in Table 3.

Table 4 Insulation thickness required to achieve design U values⁽¹⁾⁽²⁾⁽³⁾ using galvanized steel fixings (30-year durability)

| U value ⁽⁴⁾ (W·m ⁻² ·K ⁻¹) | Thickness of Insulation (mm) | | | |
|---|---|-------------------|---|-------------------|
| | 215 mm brickwork, $\lambda = 0.56 \text{ W·m}^{-1}\text{·K}^{-1}$ | | 200 mm dense blockwork, $\lambda = 1.75 \text{ W·m}^{-1}\text{·K}^{-1}$ | |
| | webertherm EPS 032 | webertherm PHS | webertherm EPS 032 | webertherm PHS |
| 0.18 | 190 | 120 | 200 | — ⁽⁵⁾ |
| 0.19 | 180 | 110 | 190 | 120 |
| 0.25 | 130 | 80 | 130 | 90 |
| 0.26 | 120 | 80 | 130 | 80 |
| 0.28 | 110 | 70 | 120 | 80 |
| 0.30 | 100 | 70 | 110 | 70 |
| 0.35 | 80 | 50 | 90 | 60 |

- (1) Wall construction inclusive of 13 mm plaster ($\lambda = 0.57 \text{ W·m}^{-1}\text{·K}^{-1}$), brickwork (protected) with 17.1% mortar or dense blockwork with 6.7% mortar ($\lambda = 0.88 \text{ W·m}^{-1}\text{·K}^{-1}$) and an external render thickness of 5 mm ($\lambda = 1 \text{ W·m}^{-1}\text{·K}^{-1}$). A 5 mm thick adhesive layer ($\lambda = 1 \text{ W·m}^{-1}\text{·K}^{-1}$) covering 50% of the area is also included, together with a board emissivity of 0.9 and an external render thickness of 7.5 mm ($\lambda = 1 \text{ W·m}^{-1}\text{·K}^{-1}$).
- (2) Calculations based on a mechanical system that included 7 galvanized steel fixings per square metre with a point thermal transmittance (X_p) of 0.004 W·K^{-1} per pin. Use of other types of fixings should be calculated in accordance with BS EN ISO 6946 : 2017.
- (3) Based upon incremental insulation thickness of 10 mm.
- (4) When applying the maximum available insulation thickness, these walls can achieve U values from 0.17 to $0.21 \text{ W·m}^{-2}\text{·K}^{-1}$ depending on the insulation and wall type.
- (5) See section 4.2.

Table 5 Insulation thickness required to achieve U values⁽¹⁾⁽²⁾⁽³⁾ using stainless steel fixings (60-year durability)

| U value ⁽⁴⁾ (W·m ⁻² ·K ⁻¹) | Thickness of Insulation (mm) | | | |
|---|---|-------------------|---|-------------------|
| | 215 mm brickwork, $\lambda = 0.56 \text{ W·m}^{-1}\text{·K}^{-1}$ | | 200 mm dense blockwork, $\lambda = 1.75 \text{ W·m}^{-1}\text{·K}^{-1}$ | |
| | webertherm EPS 032 | webertherm PHS | webertherm EPS 032 | webertherm PHS |
| 0.18 | 170 | 110 | 180 | 110 |
| 0.19 | 160 | 100 | 170 | 110 |
| 0.25 | 120 | 70 | 120 | 80 |
| 0.26 | 110 | 70 | 120 | 80 |
| 0.28 | 100 | 70 | 110 | 70 |
| 0.30 | 90 | 60 | 100 | 70 |
| 0.35 | 80 | 50 | 80 | 50 |

- (1) Wall construction inclusive of 13 mm plaster ($\lambda = 0.57 \text{ W·m}^{-1}\text{·K}^{-1}$), brickwork (protected) with 17.1% mortar or dense blockwork with 6.7% mortar ($\lambda = 0.88 \text{ W·m}^{-1}\text{·K}^{-1}$). The declared thermal conductivity of insulation values (λ_D) is as shown in Table 3. A 5 mm thick adhesive layer ($\lambda = 1 \text{ W·m}^{-1}\text{·K}^{-1}$) covering 50% of the area is also included, together with a board emissivity of 0.9 and an external render thickness of 7.5 mm ($\lambda = 1 \text{ W·m}^{-1}\text{·K}^{-1}$).
- (2) Calculations based on a mechanical system that included 7 stainless steel fixings per square metre with a point thermal transmittance (X_p) of 0.002 W·K^{-1} per steel pin. Use of other types of fixings should be calculated in accordance with BS EN ISO 6946 : 2017.
- (3) Based on incremental insulation thickness of 10 mm.
- (4) When applying the maximum available insulation thickness, these walls can achieve U values from 0.15 to $0.19 \text{ W·m}^{-2}\text{·K}^{-1}$ depending on the insulation and wall type.

6.3 Care must be taken in the overall design and construction of junctions with other elements and openings to minimise thermal bridges and air infiltration. Detailed guidance can be found in the documents supporting the national Building Regulations.

7 Strength and stability

General



7.1 The Certificate holder is ultimately responsible for the design of the system and it is the responsibility of the company installing the system to accurately follow the installation instructions (see also section 5). The Certificate holder must also verify that a suitably experienced and qualified individual (with adequate professional indemnity) establishes that:

- the wind loads on the different zones of the building's elevation for the specific geographical location have been calculated correctly (see section 7.3)
- the system can adequately resist and safely transfer the calculated loads, accounting for all possible failure modes, to the substrate wall and supporting structure (see sections 7.3 to 7.7 and 7.15).

7.2 The substrate and supporting structure must be capable of transferring all additional loading due to the installation of the system to the ground in a satisfactory manner. The adequacy of the substrate and supporting structure must be verified by the person or party responsible for the global stability of the building to which the system is applied. Any defects should be made good prior to the system being installed.

7.3 The wind loads on the walls should be calculated, taking into account all relevant factors such as location and topography, in accordance with BS EN 1991-1-4 : 2005 and its UK National Annex. All of the factors affecting wind load on each elevation and specific zones of the building must be considered. In accordance with BS EN 1990 : 2002 and its UK National Annex, a partial factor of 1.5 must be applied to the calculated characteristic wind pressure values to establish the design wind load to be resisted by the system.

7.4 Installations correctly designed in accordance with this Certificate will safely accommodate the applied loads due to the self-weight of the system, wind and impact.

7.5 Dry fix installations (ie with no supplementary adhesive) correctly designed in accordance with this Certificate will safely accommodate the applied loads due to the self-weight of the system, wind and impact when using EPS insulation with a maximum thickness of 160 mm, any render system and the EJOT H1 eco fixing only. Installations with minimum 50% supplementary adhesive can safely accommodate such loads for all material combinations covered by this Certificate.

7.6 Positive wind load is transferred to the substrate wall directly via compression through the render and insulation system.

7.7 Negative wind load transfer to the substrate wall depends on the application of mechanical fixings and respective primary resistance mechanisms:

Primary resistance mechanisms of external wall insulation system mechanically fixed with supplementary adhesive through insulation and for dry fix systems⁽¹⁾⁽²⁾

- the bond between the insulation and render system (see section 7.8)
- the pull-out resistance of the fixing from the substrate wall (see section 7.9)
- the pull-through resistance of the fixing (see section 7.10).

(1) For the mechanically fixed system with supplementary adhesive fixed through insulation, the contribution of the adhesive is not considered when calculating resistance to wind load.

(2) Further guidance is available from BBA Guidance Note 1, available on the BBA website (www.bbacerts.co.uk).

7.8 The characteristic bond resistance between the insulation and render interface derived from test results was $80 \text{ kN}\cdot\text{m}^{-2}$ for EPS, and $29 \text{ kN}\cdot\text{m}^{-2}$ for PHS insulations. The design resistance of the bond between the insulation and render (N_{RD1}) should be taken as the characteristic bond resistance divided by a partial factor of 9.

7.9 Typical characteristic pull-out resistances for the fixings taken from the corresponding European Technical Assessment (ETA) are given in Table 6; the values are dependent on the fixing type and must be selected to suit the specific loads and substrate concerned. In situations where suitable data does not exist⁽¹⁾, the characteristic pull-out resistance must be established from site-specific pull-out tests conducted on the substrate of the building to ascertain the minimum resistance to pull-out failure of the fixings, and determined in accordance with the guidance given in EOTA TR051 : 2016 (minimum test characteristic value = $0.6 \times$ mean of 5 lowest test results). To obtain the design pull-out resistance of the fixings (N_{RD2}), this characteristic pull-out resistance should then be divided by the partial factor given in Table 6.

(1) To qualify as suitable data, the age and condition of the substrate must be equivalent to that used to establish the values in the ETA.

Table 6 Fixings — typical characteristic pull-out resistances

| Fixing type ⁽¹⁾ | ETA number | Substrate | Drill diameter (mm) | Effective anchorage depth (mm) | Characteristic pull-out resistance ⁽²⁾ (kN) | Partial factor |
|-----------------------------|------------|--------------------------------|---------------------|--------------------------------|--|----------------|
| Fischer Termoz CS 8 | 14/0372 | Concrete C12/15 Clay brickwork | 8 | 35 ⁽³⁾ | 1.5 1.2 | 2 |
| EJOT NT U | 05/0009 | Concrete C12/15 Clay brickwork | 8 | 25 | 1.2 1.5 | 2 |
| EJOT H1 eco | 11/0192 | Concrete C12/15 Clay brickwork | 8 | 25 | 0.9 | 2 |
| EJOT STR U 2G EJOT STR U | 04/0023 | Concrete C12/15 Clay brickwork | 8 | 25 ⁽³⁾ | 1.5 | 2 |

(1) The minimum values for plate stiffness of fixings is 0.6 kN-mm⁻² and anchor plate load resistance of 1.4 kN relate to resistance values achieved with the EJOT H1 eco fixing for the relevant pull-through test, dynamic wind uplift test and the displacement test. The minimum anchor plate stiffness of 0.6 kN-mm⁻² and anchor plate load resistance of 2.08 kN relate to resistance values achieved with the EJOT STR U fixing for the relevant pull-through tests (see Table 7).

(2) Values are determined in accordance with EAD 330196-00-0604 : 2016 and are dependent on the substrate. The use categories are defined in the corresponding ETA.

(3) The fixing ETA references the effective anchorage depth for other substrates.

7.10 The characteristic pull-through resistance of the fixings was determined from tests using a 60 mm diameter fixing plate and minimum insulation thickness specified in Table 7. The design resistance per fixing (N_{RD3}) is obtained by applying an appropriate partial factor as shown in Table 7.

Table 7 Design pull-through resistances

| Factor (unit) | EPS insulation 1200 x 600 mm | | PHS insulation 1200 x 600 mm | | PHS insulation 1200 x 600 mm | |
|---|---------------------------------|-------|---------------------------------|--|---------------------------------|--|
| | Pull-through | | Pull-through | | Pull-through | |
| Tensile resistance of the insulation (kPa) | ≥ 100 | | ≥ 80 | | ≥ 80 | |
| Fixing types ⁽¹⁾ | EJOT STR U | | EJOT STR U | | EJOT H1 eco | |
| Fixing plate diameter (mm) | 60 | | 60 | | 60 | |
| Insulation thickness (mm) | 80 | | 30 | | 60 | |
| Characteristic pull through resistance ⁽²⁾ per fixing (kN) | At panel | 0.459 | 0.48 | | 0.8 | |
| Partial factor ⁽³⁾ | 2.5 | | 2.5 | | 2.5 | |
| Design pull-through resistance per fixing (kN) | 0.184 | | 0.192 | | 0.32 | |
| Design pull-through resistance per board (kN) [based on the minimum number of fixings] ⁽⁴⁾ | 0.92 | | 0.965 | | 1.6 | |
| Design pull-through resistance per board (kN) [based on maximum number of fixings] ⁽⁵⁾ | 1.472 | | 1.54 | | 2.56 | |

(1) See Table 6 for typical characteristic pull-out resistance of the fixings.

(2) Characteristic pull-through resistance of insulation over the head of the fixing, in accordance with BS EN 1990 : 2002, Annex D7.2 and its UK National Annex.

(3) The partial factor is based on the assumption that all insulation boards are quality controlled and tested to establish tensile strength perpendicular to the face of the board.

(4) The minimum design pull-through resistance per board is based on a minimum of 5 fixings per board (1200 x 600 mm), which equates to approximately 7 fixings per m². The design resistance for the minimum number of fixings is based on the fixing pattern provided in Figure 7 and minimum insulation thickness specified in this Table. The fixing pattern and interaction of the fixings should be considered when calculating the design resistance per board.

(5) The maximum design pull-through resistance per board is based on a maximum of 8 fixings per board (1200 x 600 mm), which equates to approximately 11 fixings per m². The design resistance for the maximum number of fixings is only applicable to the minimum insulation thickness tested and as specified in this Table. The fixing pattern, insulation thickness and interaction of the fixings should be considered when calculating the design resistance per board.

7.11 The number and spacing of the fixings should be determined by the Certificate holder. The number of fixings must not be less than the minimum specified for the system, and the fixings should be symmetrically positioned and evenly distributed about the centre of the board both vertically and horizontally, except at openings and building corners.

7.12 The data obtained from sections 7.8 to 7.10 must be assessed against the design wind load and the following expression must be satisfied:

For safe design:

$$R_d \geq W_e$$

$$R_{d,b.ins/rend} = A_r * N_{RD1}$$

$$R_{d,pull-out} = n * N_{RD2}$$

$$R_{d,pull-through} = (N_{RD3panel} * n_{panel}) + (N_{RD3joint} * n_{joint}) / A_{board}$$

where:

| | |
|----------------------|--|
| R_d | is the design ultimate resistance ($\text{kN}\cdot\text{m}^{-2}$) taken as the minimum of $R_{d,b.ins/rend}$, $R_{d,pull-out}$ and $R_{d,pull-through}$ |
| W_e | is the maximum design wind load ($\text{kN}\cdot\text{m}^{-2}$) |
| $R_{d,b.ins/rend}$ | is the design bond resistance between the insulation and render ($\text{kN}\cdot\text{m}^{-2}$) |
| $R_{d,pull-out}$ | is the design pull-out resistance of the insulation fixings per metre square ($\text{kN}\cdot\text{m}^{-2}$) |
| $R_{d,pull-through}$ | is the design pull-through resistance of the insulation fixings per metre square ($\text{kN}\cdot\text{m}^{-2}$) |
| A_r | is the reinforced basecoat bond area (based on % area covered) |
| N_{RD1} | is the design adhesive bond resistance between the insulation and render, based on test ($\text{kN}\cdot\text{m}^{-2}$) |
| n | is the number of anchor fixings per m^2 |
| N_{RD2} | is the design pull-out resistance per fixing based on test (kN) |
| $N_{RD3panel}$ | is the design pull-through resistance per anchor not placed at the panel joint, based on test (kN) |
| $N_{RD3joint}$ | is the design pull-through resistance per anchor placed at the panel joint, based on test (kN) |
| n_{panel} | is the number of internal anchors in a panel |
| n_{joint} | is the number of joint anchors in a panel |
| A_{board} | is the area of the board (m^2). |

7.13 The insulation system is mechanically fixed to the substrate wall with 5 fixings per board or approximately 7 fixings per metre square (1200 by 600 mm), as per the fixing pattern shown in Figure 7, and in conjunction with a minimum 50% coverage of supplementary adhesive (see section 16). Additional fixings may be required, depending on the results of the calculations detailed above for the specific site:

Primary resistance mechanisms of EWIS mechanically fixed through mesh/insulation, including dry fix systems⁽¹⁾⁽²⁾

- the cohesion resistance of the rendering system
- the pull-out resistance of the fixing from the substrate wall (see section 7.9)
- the resistance of the anchor plate to breakdown or detachment
- the resistance of mesh fabric to tearing around the anchor plate.

(1) For the mechanically fixed system with supplementary adhesive fixed through the mesh/insulation, the resistance of the system to negative wind load is obtained from the Dynamic Wind Uplift (DWU) test.

(2) Further guidance is available from BBA Guidance Note 1, available on the BBA website (www.bbacerts.co.uk).

7.14 The DWU test was carried out on the Webertherm XM External Wall Insulation System, mechanically fixed onto a masonry substrate. Phenolic insulation boards of 60 mm⁽¹⁾ thickness were initially fixed with two EJOT H1 eco fixings through each insulation board and then a further 4 EJOT H1 eco fixings per m^2 were applied through the reinforced basecoat/insulation providing an overall fixing frequency of 7 fixings per m^2 before the render finish was applied. The maximum characteristic negative wind load resistance that can be sustained by the Webertherm XM External Wall Insulation System as determined from the DWU test is $5.445 \text{ kN}\cdot\text{m}^{-2}$. The maximum design wind load resistance (R_{dTest}) is derived by dividing the maximum characteristic wind load resistance by a partial safety factor of 1.5 and equals $3.63 \text{ kN}\cdot\text{m}^{-2(2)(3)(4)(5)(6)}$.

(1) The DWU maximum design wind load resistance only applies to system with phenolic insulation thicknesses of 60 to 120mm. The pull-through resistance from Table 7 must be used for the 60-year durability system which uses less than 60 mm thick insulation.

- (2) The maximum design wind load that can be resisted by the system corresponds to the maximum allowed spacing, centres and layout of fixings. This fixing configuration with the appropriate fixings will also adequately transfer the system's self-weight, wind and impact loads to a suitable substrate wall.
- (3) Minimum coverage area of supplementary adhesive is 50%.
- (4) The partial factor for the DWU test is based on the mode of failure obtained in the test.
- (5) The design resistance is determined by dividing the characteristic resistance value obtained from a DWU test by a partial safety factor of 1.5.
- (6) Alternative fixings may be used provided it can be demonstrated that they have equal or higher plate diameter (minimum 60 mm), plate stiffness ($\geq 0.6 \text{ kN}\cdot\text{mm}^{-2}$) and anchor plate load resistance ($\geq 1.4 \text{ kN}$) characteristics.

7.15 The data derived from sections 7.8 and 7.14 must be assessed against the design wind load, and the following expressions must be satisfied:

For safe design:

$$R_{d\text{Test}} \geq W_e \text{ and } n_{RD2} \geq W_e$$

where:

$R_{d\text{Test}}$ is the design negative wind load resistance of the system based on test ($\text{kN}\cdot\text{m}^{-2}$)

W_e is the maximum design wind load ($\text{kN}\cdot\text{m}^{-2}$)

n_{RD2} is the design pull-out resistance of the system is based on characteristic values from site tests and the number of fixings per unit area must be \geq as tested in Static Foam Block test ($\text{kN}\cdot\text{m}^{-2}$).

7.16 The insulation system is mechanically fixed through mesh/insulation to the substrate wall with a minimum of 7 fixings per square metre, as per the fixing pattern shown in Figure 8 (see section 16). The design wind load resistance is only applicable to the system tested and as described in 7.14. Additional fixings may be required, depending on the design and installation conditions. However, any resulting additional wind load resistance cannot be quantified by the results of the test and as such enhancements are outside the scope of the Certificate.

Impact resistance

7.17 Hard body impact tests were carried out in accordance with ETAG 004 : 2013. The system is suitable for use in the Use Categories up and including those specified in Table 8 of this Certificate.

Table 8 System impact resistance

| Render systems: Basecoat + finishing coats indicated below: | Use Category ⁽¹⁾ |
|---|-----------------------------|
| weberend LAC + weberend PTC + weber Dry Dash Aggregate | |
| weberend LAC + weber PR310 + webersil TF | |
| weberend LAC + weber PR310 + weberplast TF | |
| weberend LAC + weber PR310 + webermineral TF | |
| weberend LAC + weberend PTC + weber PR310 + weberplast TF | |
| weberend LAC + weberend PTC + weber PR310 + webersil TF | |
| weberend LAC + weberend PTC + weber PR310 + webermineral TF | II |
| weberend LAC Rapid + weberend PTC + weber Dry Dash aggregate | |
| weberend LAC Rapid + webersil TF | |
| weberend LAC Rapid + weberplast TF | |
| weberend LAC Rapid + webermineral TF | |
| weberend LAC Rapid + weberend PTC + weber PR310 + weberplast TF | |
| weberend LAC Rapid + weberend PTC + weber PR310 + webersil TF | |
| weberend LAC Rapid + weberend PTC + weber PR310 + webermineral TF | |
| weberwall brick external adhesive + weberwall brick + weberwall brick pointing mortar | |

(1) The Use Categories are defined in ETAG 004 : 2013 as:

- Category I — a zone readily accessible at ground level to the public and vulnerable to hard body impacts but not subjected to abnormally rough use
- Category II — a zone liable to impacts from thrown or kicked objects, but in public locations where the height of the system will limit the size of the impact; or at lower levels where access to the building is primarily to those with some incentive to exercise care
- Category III — a zone not likely to be damaged by normal impacts caused by people or by thrown or kicked objects.

8 Behaviour in relation to fire



8.1 The reaction to fire classifications⁽¹⁾ of the system in accordance with BS EN 13501-1: 2018 are given in Table 9 of this Certificate.

(1) Warringtonfire Testing and Certification Ltd. Report numbers 420280, 420281, 420283, 420284, 423691, 428354, 428393, 423688, 423692, 423702, 428043, 428045, 428355, 428406, 428410 and 428419

Table 9 System fire classifications

| Rendering system comprising: | Render colour | Classification |
|---|---------------|----------------|
| webermineral TF webersil TF weberplast TF | Any | B-s2, d0 |
| weberend PTC + webermineral TF weberend PTC + webersil TF weberend PTC + weberplast TF weberwall brick weberend PTC (Dry dash finish) | Any | B-s1, d0 |



8.2 The classification applies to the full range of thicknesses, finishes and colour combinations covered by this Certificate.

8.3 The insulation materials in isolation are not classified as 'non-combustible' or 'of limited combustibility'.



8.4 In England, Wales and Northern Ireland, the system is not classified as 'non-combustible' or 'of limited combustibility' and may be used on buildings at any proximity to a boundary. The system is restricted for use up to 18 m in height.



8.5 In Scotland, the system is not classified as 'non-combustible' and may be used on buildings more than 1 m from a boundary and, on houses, 1 m or less from a boundary. With minor exceptions, the system should be included in calculations of unprotected area, except on houses where the external wall behind has the appropriate fire resistance.

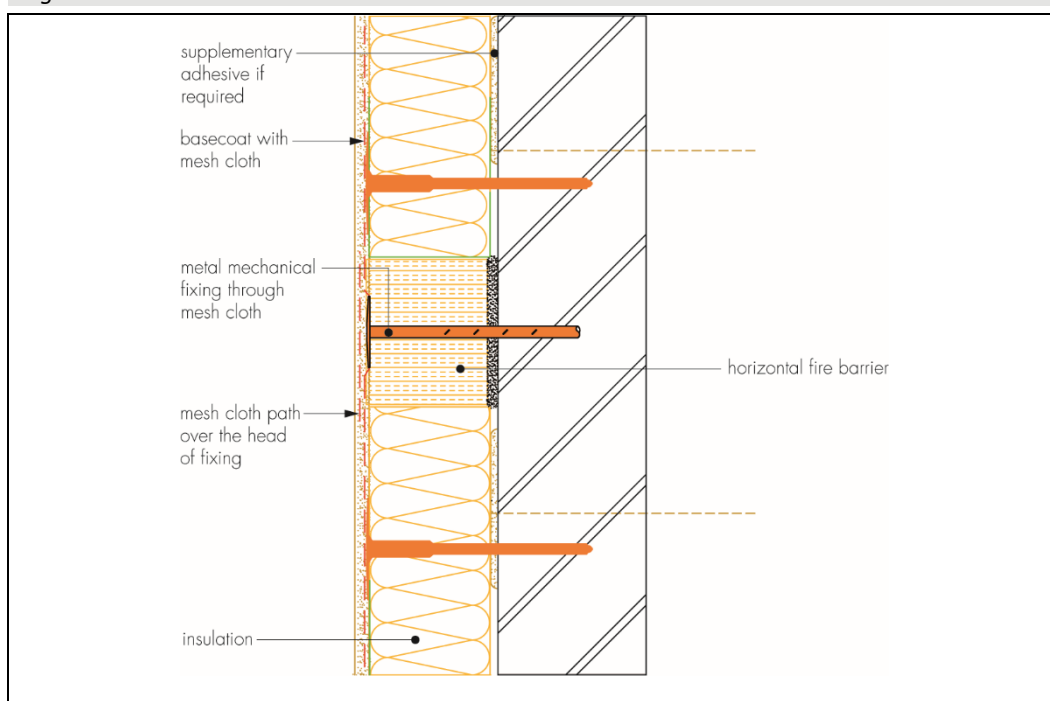
8.6 In Scotland, the system should not be used on any building with a storey more than 11 m above the ground, or on any entertainment or assembly building with a total storey area more than 500 m², or on any hospital or residential care building with a total storey area more than 200 m².

8.7 For application to second storey walls and above, it is recommended that the designer includes at least one stainless steel fixing per square metre as advised in BRE Report BR 135 : 2013.

8.8 NHBC Standards require in all cases that a minimum of one non-combustible fixing through the reinforcement mesh, per square metre or per insulation board, whichever provides the greater number, should be provided, in addition to the other fixings.

8.9 Designers should refer to the relevant national Building Regulations and guidance for detailed conditions of use, particularly in respect of requirements for substrate fire performance, cavity barriers, service penetrations and combustibility limitations for other materials and components used in the overall wall construction.

Figure 2 Fire barrier details



9 Proximity of flues and appliances

Where the system is installed in close proximity to certain flue pipes, the relevant provisions of the national Building Regulations should be satisfied.

10 Water resistance



10.1 The system will provide a degree of protection against water ingress. However, care should be taken to ensure that substrate walls are adequately watertight prior to application of the system. The system must only be installed where there are no signs of dampness on the inner surface of the substrate other than those caused solely by condensation.

10.2 Designers and installers should take particular care in detailing around openings, penetrations and movement joints to minimise the risk of rain ingress.

10.3 The guidance given in BRE Report BR 262 : 2002 should be followed in connection with the watertightness of solid wall constructions. The designer should select a construction appropriate to the local wind-driven rain index, paying due regard to the design detailing, workmanship and materials to be used.

10.4 At the top of walls, the system should be protected by a coping, adequate overhang or other detail designed for use with this type of system (see section 16).

11 Risk of condensation

11.1 Designers must ensure that an appropriate condensation risk analysis has been carried out for all parts of the construction, including openings and penetrations at junctions between the insulation system and windows, to minimise the risk of condensation. The recommendations of BS 5250 : 2011 should be followed.

Surface condensation



11.2 Walls will adequately limit the risk of surface condensation when the thermal transmittance (U value) does not exceed $0.7 \text{ W} \cdot \text{m}^{-2} \cdot \text{K}^{-1}$ at any point and the junctions with other elements and openings comply with section 6.3.



11.3 Walls will adequately limit the risk of surface condensation when the thermal transmittance (U value) does not exceed $1.2 \text{ W}\cdot\text{m}^{-2}\cdot\text{K}^{-1}$ at any point. Guidance may be obtained from BS 5250 : 2011 Section 4 and Annex G, and BRE Report BR 262 : 2002.

Interstitial condensation



11.4 Walls incorporating the system will adequately limit the risk of interstitial condensation when they are designed and constructed in accordance with BS 5250 : 2011 Section 4 and Annexes D and G.

11.5 The water vapour resistance (μ) factor (for the insulation boards) and equivalent air layer thickness (s_d) (for the render systems) are shown in Table 10.

Table 10 Water vapour resistance factor and equivalent air layer thickness

| | (s _d) (m) | (μ) |
|--|-----------------------|-------------------------|
| EPS 70 insulation thicknesses: 80 to 200mm | | 20 to 40 ⁽¹⁾ |
| Phenolic insulation thicknesses: 30 to 120 mm | | 50 |
| Rendering system : weberend LAC (6 mm thick) + render system (specific particle size), as indicated below: | | |
| weberend PTC + weberend dry dash | 0.33 | — |
| weberend PTC (8 mm thick) + weber PR310 + weberplast TF (particle size 1.5 mm) | 0.80 | — |
| weberend PTC (8 mm thick) + weber PR310 + webersil TF (particle size 1.5 mm) | 0.78 | — |
| weberend PTC (8 mm thick) + weber PR310 + webermineral TF (particle size 1.5 mm) | 0.52 | — |
| weber PR310 + weberplast TF (particle size 1.5 mm) | 0.69 | — |
| weber PR310 + webersil TF (particle size 1.5 mm) | 0.67 | — |
| weber PR310 + webermineral TF (particle size 1.5 mm) | 0.41 | — |
| Rendering system : weberend LAC Rapid (6 mm thick) + rendering system (specific particle size), as indicated below | | |
| weberend PTC + weberend dry dash | 0.36 | — |
| weberend PTC (8 mm thick) + weber PR310 + weberplast TF (particle size 1.5 mm) | 0.83 | — |
| weberend PTC (8 mm thick) + weber PR310 + webersil TF (particle size 1.5 mm) | 0.81 | — |
| weberend PTC (8 mm thick) + weber PR310 + webermineral TF (particle size 1.5 mm) | 0.55 | — |
| weberplast TF (particle size 1.5 mm) | 0.47 | — |
| webersil TF (particle size 1.5 mm) | 0.46 | — |
| webermineral TF (particle size 1.5 mm) | 0.44 | — |
| Rendering system : weberend LAC Rapid (3 mm thick) + rendering system, as indicated below | | |
| weberwall brick external adhesive (3 mm) + weberwall brick + weberwall brick pointing mortar | 0.42 | — |

(1) It is recommended that the lower figure is used when assessing the interstitial condensation risk.

12 Maintenance and repair



12.1 An initial inspection should be made within 12 months and regularly thereafter to include:

- visual inspection of the render for signs of damage. Cracks in the render exceeding 0.2 mm must be repaired
- examination of the sealant around openings and service entry points
- visual inspection of architectural details designed to shed water to confirm that they are performing properly
- visual inspection to ensure that water is not leaking from external downpipes or gutters; such leakage could penetrate the rendering
- necessary repairs effected immediately and the sealant joints at window and door frames replaced at regular intervals
- maintenance schedules, which should include the replacement and resealing of joints (for example, between the insulation system and window and door frame).

12.2 For a 60-year durability, a detailed maintenance plan must be prepared and provided to the building manager/owner on completion. As a minimum, this should include an inspection for evidence of defects twelve months after the application and subsequently every five years. This plan should include full details of the required inspection regime and a record of these inspections should be retained.

12.3 Damaged areas must be repaired using the appropriate components and procedures detailed in the Certificate holder's installation instructions and in accordance with BS EN 13914-1 : 2016.

13 Durability



13.1 The system will remain effective for at least 30 years, provided any damage to the surface finish is repaired immediately and regular maintenance is undertaken, as described in section 12.

13.2 The system's service life can be extended to 60 years provided a planned inspection and maintenance programme is introduced in accordance with section 12. An extended 60 years' service life requires the use of insulation board adhesive, stainless steel base and corner profiles, stainless steel fixings or centre pin Grades 1.4301 or 1.4401 and plastic anchor sleeve material such as polyamide (PA6 and PA6.6), polyethylene (PE) or polypropylene (PP) and the following of an appropriate repair and maintenance schedule as covered by the Certificate holder's Repair and Maintenance Manual. In order to achieve this, and depending on the building's location, degree of exposure and detailing, it may be necessary to repair or replace isolated areas. Any damage to the surface finish must be repaired within a time period agreed in the Certificate holder's Maintenance Manual.

13.3 Any render containing cement may be subject to lime bloom. The occurrence of this may be reduced by avoiding application in adverse weather conditions. The effect is transient and less noticeable on lighter colours.

13.4 The finishes may become discoloured with time, the rate depending on the initial colour, the degree of exposure and atmospheric pollution, as well as the design and detailing of the wall. In common with traditional renders, discoloration by algae and lichens may occur in wet areas. The appearance may be restored by a suitable power wash or, if required, by over coating, provided the coating does not adversely affect the water vapour transmission or fire characteristics of the system. The advice of the Certificate holder should be sought as to the suitability of a particular product.

Installation

14 Site survey and preliminary work

14.1 A pre-installation survey of the property must be carried out to determine suitability for treatment and the need for any necessary repairs to the building structure before application of the system. A specification is prepared for each elevation of the building indicating:

- the position of beads
- detailing around windows and doors and at eaves
- damp-proof course (dpc) level
- exact position of expansion joints, if required
- areas where flexible sealants must be used
- any alterations to external plumbing
- the position of fire barriers.

14.2 The survey should include tests conducted on the walls of the building by the Certificate holder or their approved installers (see section 15) to determine the pull-out resistance of the specified mechanical fixings for the appropriate substrate. An assessment and recommendation is made on the type and number of fixings required to withstand the building's expected wind loading based on calculations using the test data and pull-out resistance (see section 7). The advice of the Certificate holder should be sought to ensure the proposed bonding pattern (insulation board adhesive) is sufficient.

14.3 All modifications, such as alterations to external plumbing and necessary repairs to the building structure, must be completed before installation of the system commences.

14.4 Surfaces should be sound, clean, and free from loose material. The flatness of surfaces must be checked; this may be achieved using a straight-edge tool spanning the storey height. Any excessive irregularities, ie greater than 10 mm in 1 m, must be made good prior to installation, to ensure that the insulation boards are installed with a smooth, in-plane finished surface.

14.5 Where surfaces are covered with an existing rendering, it is essential that the bond between the background and the render is adequate. All loose areas should be hacked off and reinstated.

14.6 On existing buildings, purpose-made sills must be fitted to extend beyond the finished face of the system. New buildings should incorporate suitably deep sills.

14.7 In new buildings, internal wet work (eg, screeding or plastering) should be completed and allowed to dry prior to the application of the system.

15 Approved installers

Application of the system, within the context of this Certificate, must be carried out by installers approved, recommended or recognised by the Certificate holder. Such an installer is a company:

- employing operatives who have been trained and approved by the Certificate holder to install the system
- which has undertaken to comply with the Certificate holder's application procedure, containing the requirement for each application team to include at least one member-operative trained by the Certificate holder
- subject to at least one inspection per annum by the Certificate holder to ensure suitable site practices are being employed. This may include unannounced site inspections.

16 Procedure

General

16.1 Installation of the system should be carried out in accordance with the Certificate holder's current installation instructions and this Certificate.

16.2 Weather conditions should be monitored to ensure correct application and curing conditions. Application of coating materials must not be carried out at temperatures below 5°C or above 30°C, or if exposure to frost is likely, and the coating must be protected from rapid drying. Installation should not take place during rainfall or if rain is anticipated. In addition, cementitious-based renders must not be applied if the temperature will fall below 0°C within 24 hours of completion.

16.3 The planarity of the substrate must be checked, and any protrusions exceeding 10 mm removed.

16.4 Where required, a fungicidal wash is applied to the entire surface of the external wall by brush or spray and left for a minimum of 48 hours before removing dead growth with a stiff bristle or wire brush or alternatively by power washing.

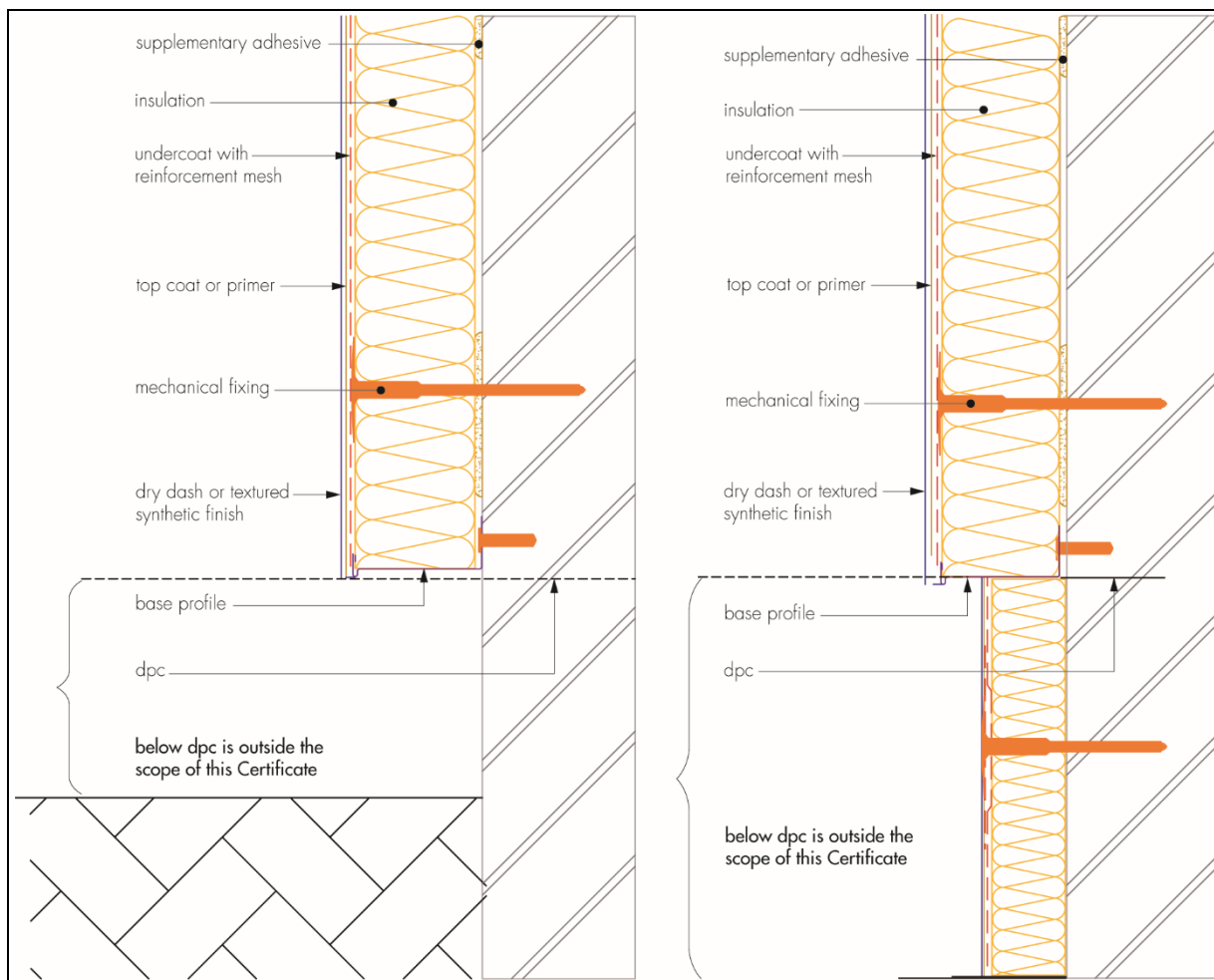
16.5 All rendering should be in accordance with the relevant recommendations of BS EN 13914-1 : 2016.

16.6 Before installation takes place, the building designer must confirm where items such as rainwater goods, satellite dishes, clothes lines and hanging baskets will be placed. The fixing points for these items must be specifically designated and built into the system as the insulation is installed. This is outside the scope of this Certificate.

Positioning and securing insulation boards

16.7 The base profile is secured to the external wall above the dpc using mechanical fixings at maximum 700 mm centres. Base profile connectors are installed at all profile joints. Extension profiles are fixed at the front lip of the base rail or stop end profile as appropriate. Profiles and expansion joints are fitted as specified (see Figure 3). For 60-year durability applications, the starter track must be constructed from stainless steel.

Figure 3 Typical section at base profile

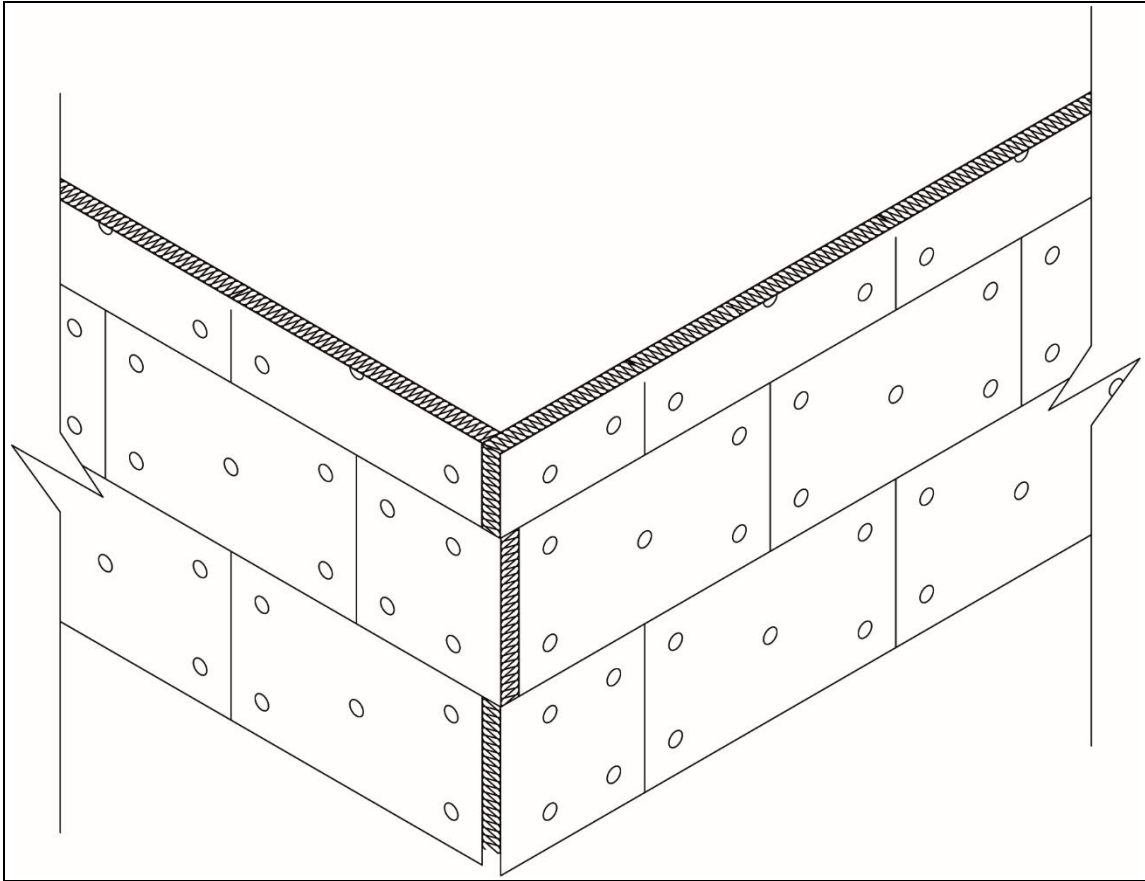


16.8 The insulation boards should be bonded to the wall using supplementary adhesive when required (adhesive is mandatory with phenolic insulation and for the 60-year durability system). The adhesive is prepared with the required amount of water (20 kg of weberend LAC or weberend LAC Rapid to 5 litres of potable water), and mixed with a paddle mixer until the desired consistency is achieved. After allowing the adhesive to rest for 5 minutes, it is stirred again. The adhesive is applied to the insulation in four vertical strips, 100 mm wide and 25 to 30 mm thick. The adhesive should cover a minimum 50% of the board and care must be taken to ensure that any incidental vertical cavities resulting from the staggered insulation board layout are closed at each row with the supplementary adhesive.

16.9 The first run of insulation boards is positioned on the base profile with adhesive applied and pressed firmly against the wall, butted tightly together and aligned to achieve a level finish.

16.10 Subsequent rows of boards are positioned so that the vertical board joints are staggered and overlapped at the building corners and so that the board joints do not occur within 250 mm of the corners of openings (see Figure 4) and any incidental vertical cavities are closed at each row with the supplementary adhesive. Joints between boards greater than 2 mm should be filled with slivers of insulation board or expansion foam with the appropriate reaction to fire classification. Gaps greater than 10 mm should be closed by repositioning or, where appropriate, by cutting boards to fit. Any high spots or irregularities are removed by lightly planing with a rasp. As phenolic insulation cannot be planed, adhesive is applied to the back of the boards to allow edges to be levelled during application. Alignment should be checked as work proceeds.

Figure 4 Board layout on the wall and at corners of a building



16.11 To fit around details such as doors and windows, the boards may be cut with a sharp knife or a fine-tooth saw. If required, purpose-made window sills, designed to prevent water ingress and incorporate drips to shed water clear of the system, are fitted but their performance is outside the scope of this Certificate.

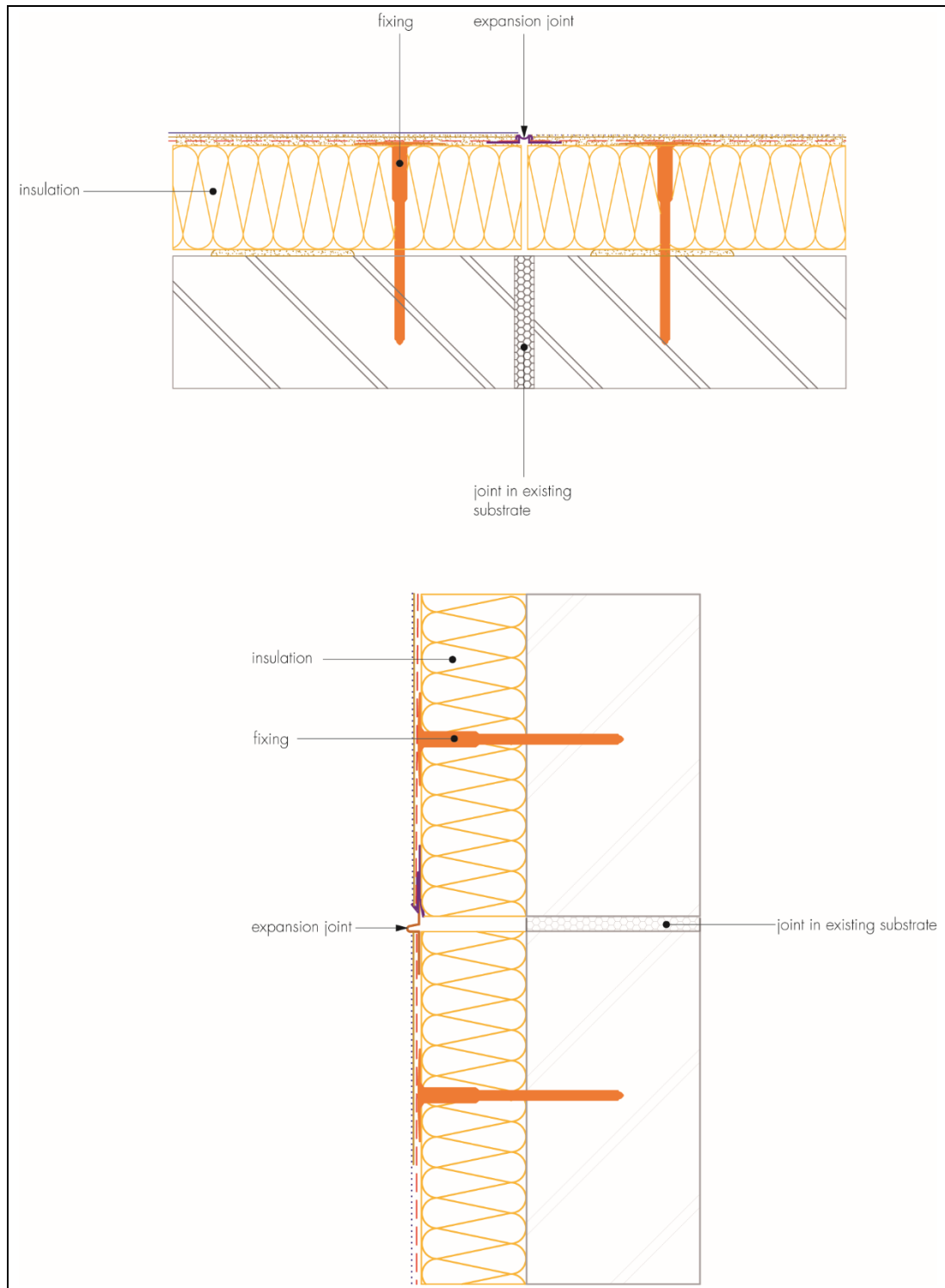
16.12 Installation continues until the whole wall is completely covered including, where appropriate, the building soffits. Building corners, door and window heads and jambs are formed using mesh angle profiles bonded to the insulation. Where appropriate, application-specific profiles are installed to allow rainwater to drain, in accordance with the manufacturer's instructions.

16.13 Periodic checks should be carried out as work proceeds. Allowance should be made where either existing render is on the wall or dubbing out render has been used to align the boards, as the effective embedment will be reduced. Window and door reveals should be insulated to minimise the effects of cold bridging.

Movement joints

16.14 Generally, movement joints in the substrate must be continued through the system by cutting through the insulation boards to coincide with the building's movement joint. The weber expansion joint profile is fully bedded in mortar on the insulation board surface (see Figure 5). For systems incorporating weberend PTC top coat, unbroken panels of render should be restricted to areas between 45 and 50 m², with an aspect ratio no greater than 4:1. Systems incorporating only weberend LAC or weberend LAC Rapid and a synthetic finish do not have area limitations.

Figure 5 Example vertical and horizontal movement joints

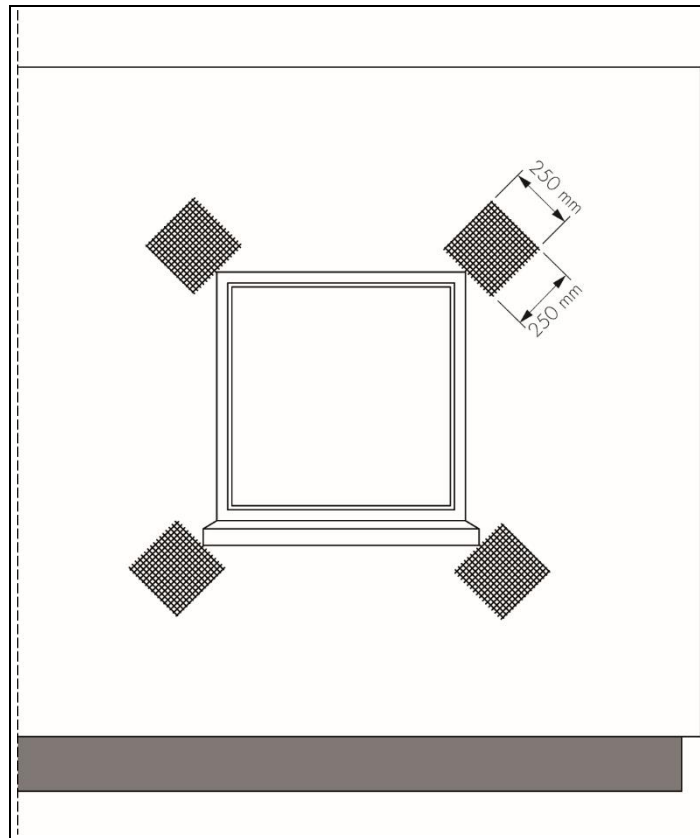


Application of reinforcing mesh

16.15 The basecoats are prepared (20 kg of weberend LAC, weberend LAC Rapid or weberwall brick external adhesive to 5 litres of potable water) as described in section 1.7.

16.16 To provide the necessary reinforcement, stress patches of reinforcing mesh (approximate size 250 by 250 mm) are applied with basecoat, diagonally over the insulation boards at the corners of openings so that they extend equally either side of the corner (see Figure 6). Angle beads and stop beads are positioned in accordance with the Certificate holder's installation instructions.

Figure 6 Additional reinforcement at openings

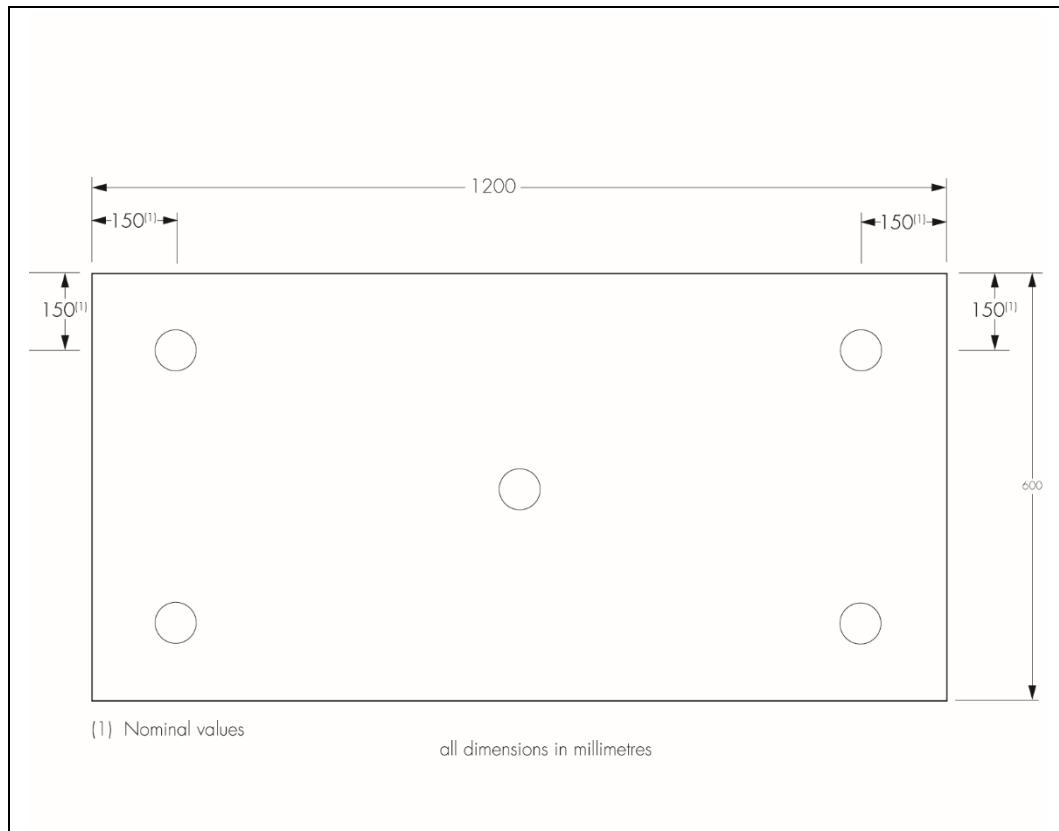


16.17 Installation procedures specific to the 30- and 60-year durability systems are described in sections 16.18 to 16.27.

Application of 30-year durability system — mechanical fixings through the insulation boards

16.18 Details of mechanical fixings (including their layout) are specified in the project-specific design requirements based on pull-out test results and wind-loading data. Holes are drilled through the insulation board into the substrate wall and mechanical fixings (minimum of 7 per square metre) are inserted and tapped or screwed firmly into place, following the fixing pattern shown in Figure 7. If required, extra fixings can be applied at the edge zones to satisfy the wind load conditions. Installation of the fixings must commence whilst the supplementary adhesive (if required) is wet, unless using a dry fix system. Care must be taken to ensure that the fixings are not overdriven.

Figure 7 Typical fixing pattern – 30-years' durability



16.19 The basecoat is applied in two passes. The first layer of basecoat is applied progressively by trowel or spray machine to the surface of the dry insulation to achieve an approximate thickness of 3 mm.

16.20 Reinforcing mesh is applied and immediately embedded into the basecoat using the trowel, and overlapped at all mesh joints by at least 100 mm. For systems other than the weberwall brick system a further layer of basecoat is applied to give an overall minimum thickness of 6 mm, and the surface ruled level. For synthetic finish applications, the basecoat must be finished with a sponge float as the basecoat starts to 'take up', working in a figure-of-eight motion. Where a topcoat (weberend PTC) is to be applied, the surface of the basecoat should be comb scratched. The basecoat must be allowed to dry/cure (minimum 24 hours for weberend LAC Rapid basecoat and a minimum of 3 days for weberend LAC basecoat) before the application of the primer/finishing coat (weberend LAC Rapid does not require a primer).

16.21 For the weberwall brick system, a further 3 mm thick layer of weberwall brick external adhesive is applied over the wet first layer of basecoat to give an overall minimum thickness of 6 mm using a 10 mm square notched trowel to comb through the adhesive to prepare the wet adhesive for application of weberwall brick.

16.22 It is important to make sure that the reinforcing mesh is free of wrinkles and completely covered, and that the required minimum thickness of basecoat is achieved.

16.23 A 30-year durability may also be achieved with a system fixed through the reinforced basecoat, provided that the installation procedure for 60-year durability in sections 16.24 to 16.28 is followed, but the use of adhesive is optional and there is no requirement to use stainless steel components.

Application of 60- year durability system — mechanical fixings through the reinforcing mesh

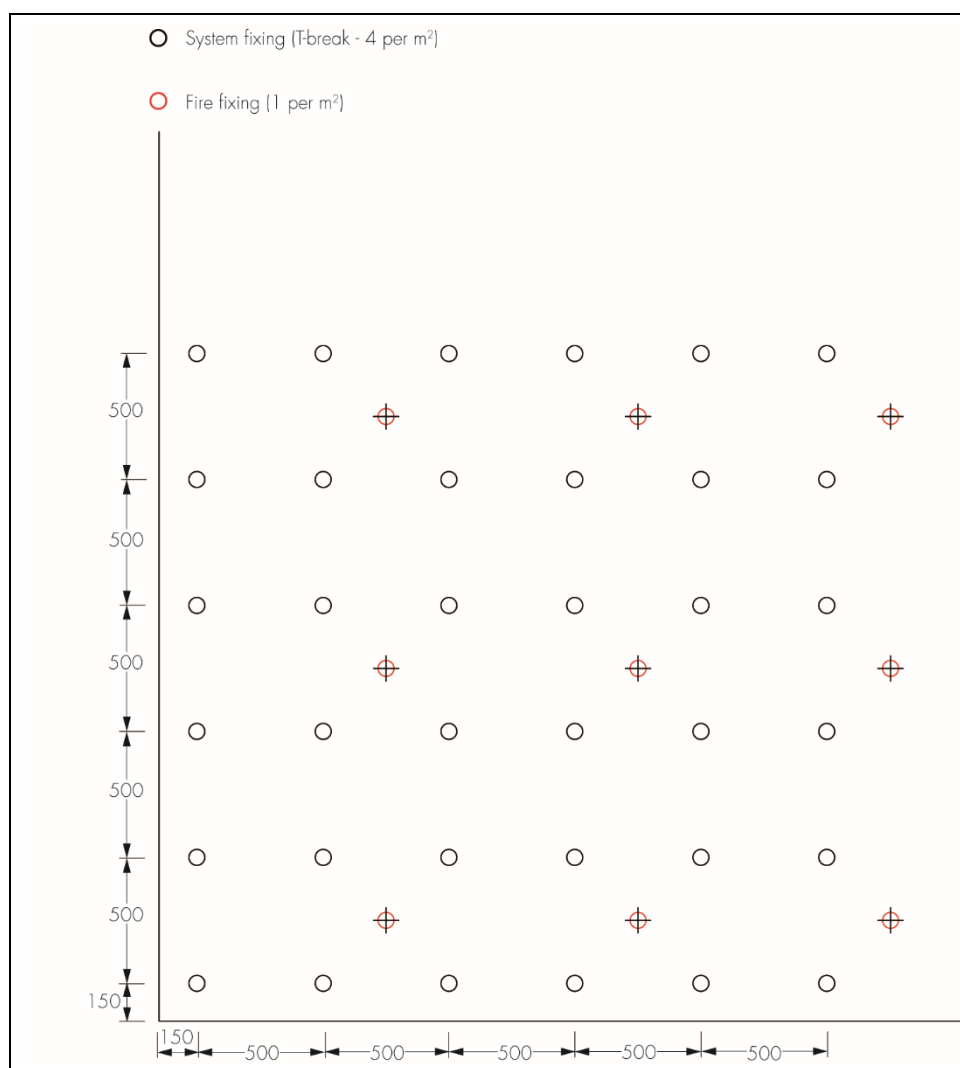
16.24 While the supplementary adhesive, if required, is still wet, two mechanical fixings are applied though each insulation board to secure them during installation of the system. The basecoat is applied no earlier than 24 hours after the application of adhesive. The first layer of basecoat is applied progressively to the surface of the insulation to a thickness of approximately 3 mm.

16.25 Reinforcing mesh is applied and immediately embedded into the basecoat using the trowel, and overlapped at all mesh joints by not less than 100 mm.

16.26 It is important to make sure that the reinforcing mesh is free of wrinkles and completely covered, and that the required minimum thickness of basecoat is achieved.

16.27 While the basecoat is still wet, holes are drilled through the reinforcing mesh and insulation boards into the substrate wall to the required depth at the specified frequency and pattern, but not less than four fixings per square metre (see Figure 8). The mechanical fixings are inserted and tapped or screwed firmly into place, securing the mesh and insulation boards to the substrate wall providing an overall minimum fixing frequency of 7 fixings per m². The fixings are slightly overdriven into the substrate wall in order to allow the fixing plate to partially penetrate through onto the face of the insulation boards.

Figure 8 60-years' durability fixing pattern



16.28 While the basecoat is still wet, 200 by 200 mm stress patches of reinforcing mesh are applied over the head of the fixings and fully embedded with the basecoat. For systems other than the weberwall brick system a further layer of basecoat is then applied to maintain an approximate thickness of 6 mm when measured from the top of the fixing head. For synthetic finish applications, the basecoat must be finished with a sponge float as the basecoat starts to 'take up', working in a figure-of-eight motion. Where a topcoat (weberend PTC) is to be applied, the surface of the basecoat should be comb scratched. The basecoat must be allowed to dry/cure (minimum 24 hours for weberend LAC Rapid basecoat and a minimum of 3 days for weberend LAC basecoat) before the application of the primer/finishing coat (weberend LAC Rapid does not require a primer). For the weberwall brick system a 3 mm thick layer of weberwall brick external adhesive is applied over the wet first layer of basecoat to give an overall minimum thickness of 6 mm using a 10 mm square notched trowel to comb through the adhesive to prepare the wet adhesive for application of weberwall brick.

Rendering and finishing

16.29 When applicable, the primer coat (weber PR310) is applied by brush, roller or spray and allowed to dry prior to the application of the render finish (see Tables 1A and 1B).

16.30 Prior to applying the finishes, the relevant seals are positioned and installed at all openings (eg windows and doors), overhanging eaves, gas and electric meter boxes, wall vents or where the render abuts any other building material or surface. Unless a proprietary sealing bead has been installed prior to application of the basecoat render.

16.31 To prevent the finishes from drying too rapidly, they should not be applied in direct sunlight. The finished render surface should be protected from rain and frost until the material is dry and hard (approximately 24 hours in favourable conditions; in winter, this may take at least 48 hours). Continuous surfaces must be completed without a break.

Render finishes

weberend PTC

16.32 When the weberplast TF, webersil TF or webermineral TF finish is applied over the weberend PTC topcoat, the basecoat is comb scratched. The weberend PTC (topcoat) is prepared and mixed to a smooth, workable consistency then trowel-applied onto the basecoat to a thickness of approximately 6 to 8 mm. The top coat must be allowed to dry/cure (a minimum of 3 days) before the application of the primer/finishing coat.

weberplast TF and webersil TF

16.33 Where used, weberplast TF and webersil TF must each be mixed thoroughly before application. The chosen finish is applied with a steel trowel to a uniform thickness, and immediately worked with a thin plastic or wooden float to produce the desired texture.

webermineral TF

16.34 The webermineral TF is prepared and mixed to a smooth, workable consistency then trowel-applied onto the basecoat to a thickness of approximately 1.5 mm.

Dry-dash aggregate finish

16.35 Where a dry-dash finish is required, the basecoat is comb scratched. The weberend PTC (topcoat) is prepared and mixed to a smooth, workable consistency then trowel-applied onto the basecoat to a thickness of approximately 6 to 8 mm.

16.36 While the render is still soft, the dry-dash finish is applied with a dashing trowel. Narrow widths of weberend PTC are used around window and door openings and in reveals, and may be smooth-float-finished and painted. On completion, the surface should be checked to ensure an even coverage has been achieved.

weberwall brick slips with weberwall brick pointing mortar

16.37 The weberwall brick is immediately pressed into the wet adhesive, ensuring the mesh is fully immersed in adhesive. Weberwall brick pointing mortar is then applied in joints once the adhesive has set in accordance with the Certificate holder's instructions. Excess mortar is removed with a dry brush.

16.38 Care should be taken in the detailing of the system around features such as openings, projections and at eaves (see Figures 9 to 12) to ensure adequate protection against water ingress and to limit the risk of water penetrating the system.

16.39 At the top of walls, the system must be protected by a coping, adequate overhang or adequately sealed, purpose-made flashing.

Figure 9 Typical detail – eaves

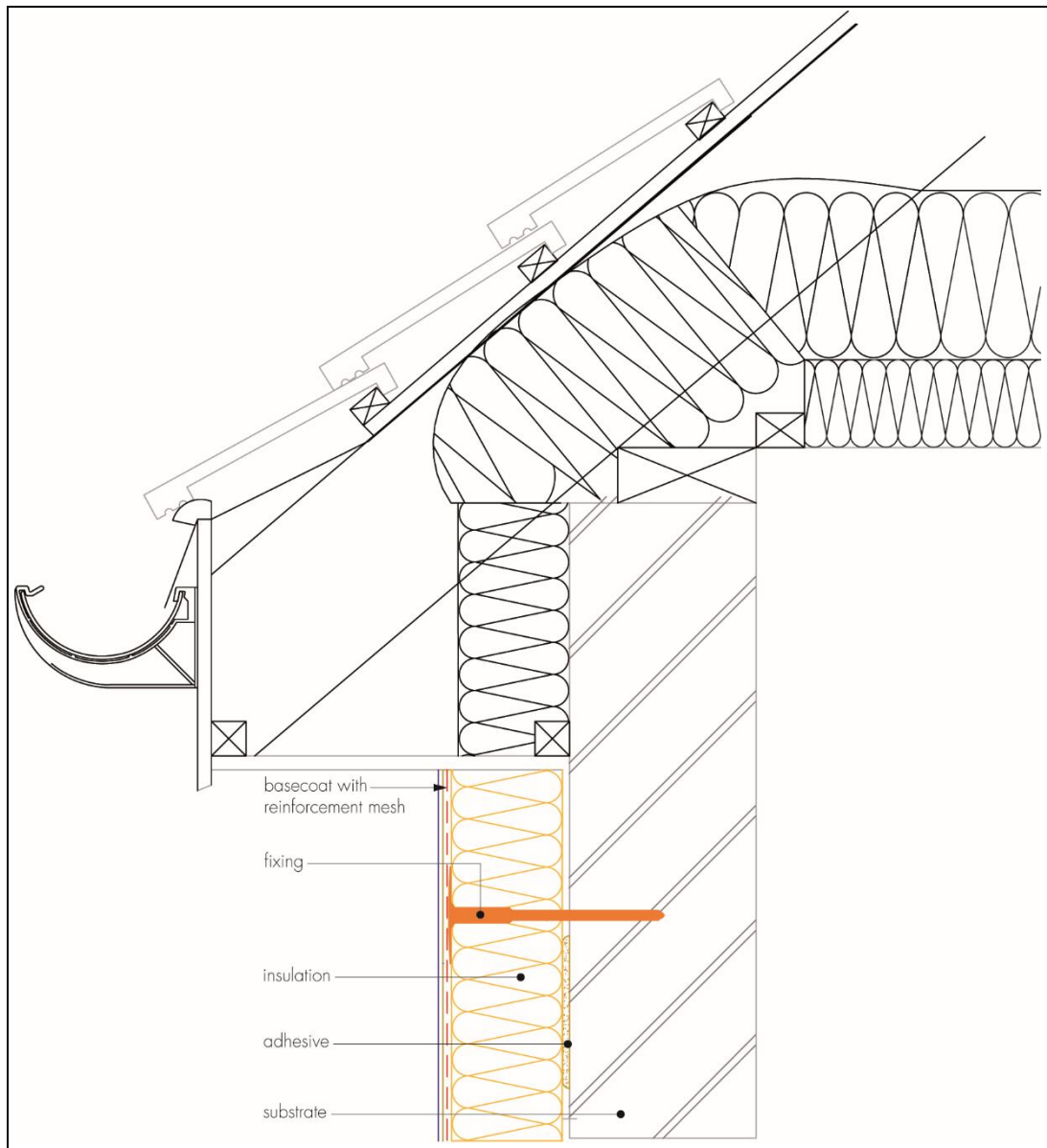


Figure 10 Insulated window reveal details

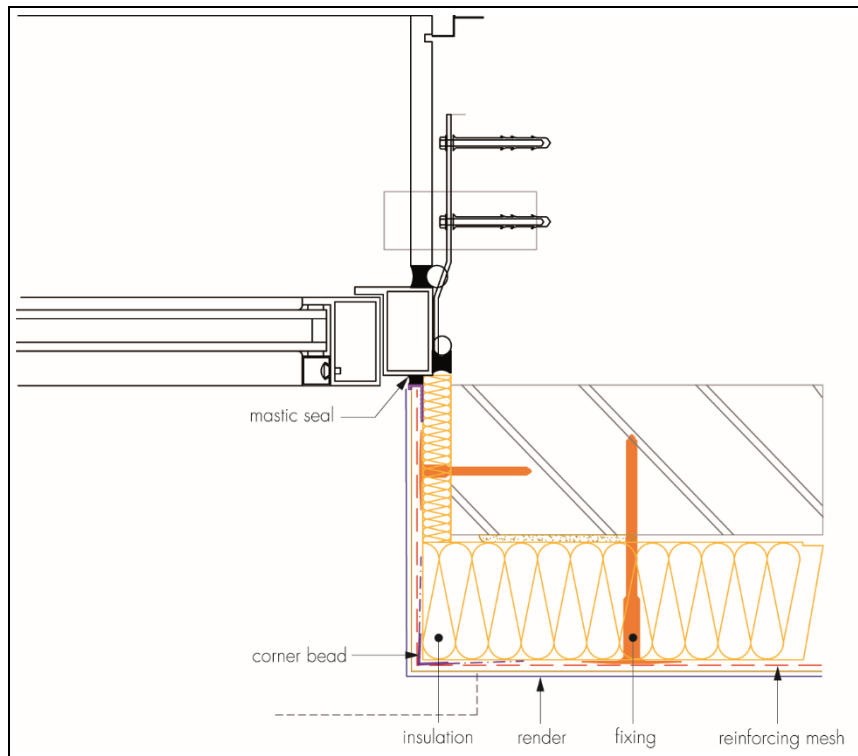


Figure 11 Typical window head detail

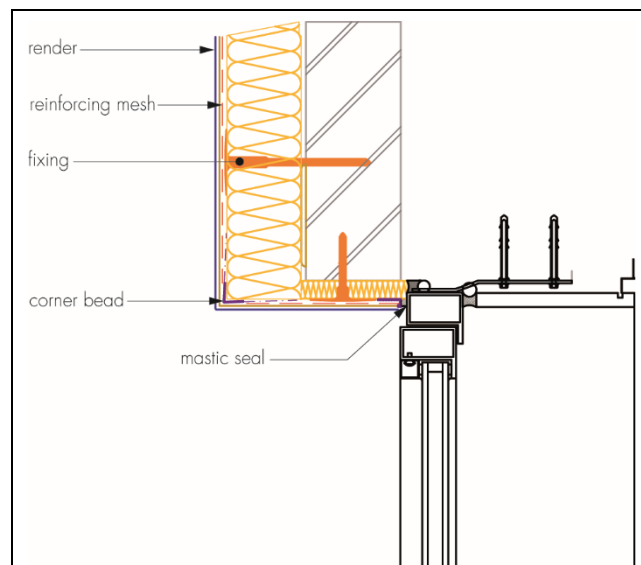
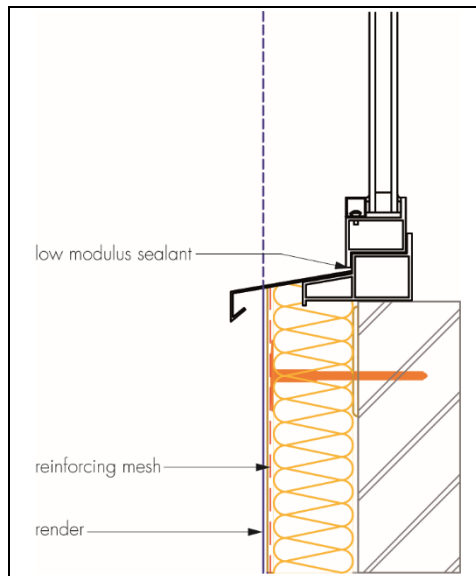


Figure 12 Window sill details



Technical Investigations

17 Tests

17.1 Results of tests were assessed to determine:

- reaction to fire classification in accordance with BS EN 13501-1 : 2018
- hygrothermal performance (heat/spray cycling)
- render/insulation bond strength
- resistance to hard body impact
- water vapour permeability
- water absorption
- pull-through resistance of fixings.

17.2 An examination was made of data relating to:

- durability
- adequacy of the fixing system
- the risk of interstitial condensation
- thermal conductivity and example U values
- system wind load resistance.

18 Investigations

18.1 The practicability of installation and the effectiveness of detailing techniques were assessed.

18.2 The manufacturing process was evaluated, including the methods adopted for quality control, and details were obtained of the quality and composition of the materials used.

Bibliography

- BRE Report BR 135 : 2013 *Fire performance of external thermal insulation for walls of multistorey buildings*
- BRE Report BR 262 : 2002 *Thermal insulation : avoiding risk*
- BRE Report BR 443 : 2006 *Conventions for U-value calculations*
- BS 5250 : 2011 + A1 : 2016 *Code of practice for control of condensation in buildings*
- BS 8000-0 : 2014 *Workmanship on construction sites — Introduction and general principles*
- BS 8000-2.2 : 1990 *Workmanship on building sites — Code of practice for concrete work — Sitework with in situ and precast concrete*
- BS 8000-3 : 2001 *Workmanship on building sites — Code of practice for masonry*
- BS EN 1990 : 2002 + A1 : 2005 *Eurocode — Basis of structural design*
- NA to BS EN 1990 : 2002 + A1 : 2005 UK National Annex to *Eurocode — Basis of structural design*
- BS EN 1991-1-4 : 2005 + A1 : 2010 *Eurocode 1 — Actions on structures — General actions — Wind actions*
- NA to BS EN 1991-1-4 : 2005 + A1 : 2010 UK National Annex to *Eurocode 1 — Actions on structures — General actions — Wind actions*
- BS EN 1992-1-1 : 2004 + A1 : 2014 *Eurocode 2 — Design of concrete structures — General rules and rules for buildings*
- NA + A2 : 14 to BS EN 1992-1-1 : 2004 + A1 : 2014 UK National Annex to *Eurocode 2 — Design of concrete structures — General rules and rules for buildings*
- BS EN 1996-1-1 : 2005 + A1 : 2012 *Eurocode 6 — Design of masonry structures — General rules for reinforced and unreinforced masonry structures*
- NA to BS EN 1996-1-1 : 2005 + A1 : 2012 UK National Annex to *Eurocode 6 — Design of masonry structures — General rules for reinforced and unreinforced masonry structures*
- BS EN 1996-2 : 2006 *Eurocode 6 — Design of masonry structures — Design considerations, selection of materials and execution of masonry*
- NA to BS EN 1996-2 : 2006 UK National Annex to *Eurocode 6 — Design of masonry structures — Design considerations, selection of materials and execution of masonry*
- BS EN 10088-2 : 2014 *Stainless steel — Technical delivery conditions for sheet/plate and strip of corrosion resisting steels for general purposes*
- BS EN 13163 : 2012 + A2 : 2016 *Thermal insulation products for buildings — Factory made products of expanded polystyrene (EPS) — Specification*
- BS EN 13166 : 2012 + A2 : 2016 *Thermal insulation products for buildings — Factory made phenolic foam (PHS) products — Specification*
- BS EN 13501-1 : 2018 *Fire classification of construction products and building elements — Classification using test data from reaction to fire tests*
- BS EN 13914-1 : 2016 *Design, preparation and application of external rendering and internal plastering — External rendering*
- BS EN ISO 6946 : 2017 *Building components and building elements — Thermal resistance and thermal transmittance — Calculation method*
- BS EN ISO 9001 : 2015 *Quality management systems — Requirements*
- BS EN ISO 11600 : 2003 + A1 : 2011 *Building construction — Jointing products — Classification and requirements for sealants*
- EAD 330196-00-0604 : 2016 *Plastic anchors made of virgin or non-virgin material for fixing of external thermal insulation composite systems with rendering*
- EOTA TR051 : 2016 *Recommendations for job-site tests of plastic anchors and screws*
- ETAG 004 : 2013 *Guideline for European Technical Approval of Plastic Anchors for fixing of External Thermal Composite Systems with Rendering*

19 Conditions

19.1 This Certificate:

- relates only to the product/system that is named and described on the front page
- is issued only to the company, firm, organisation or person named on the front page – no other company, firm, organisation or person may hold or claim that this Certificate has been issued to them
- is valid only within the UK
- has to be read, considered and used as a whole document – it may be misleading and will be incomplete to be selective
- is copyright of the BBA
- is subject to English Law.

19.2 Publications, documents, specifications, legislation, regulations, standards and the like referenced in this Certificate are those that were current and/or deemed relevant by the BBA at the date of issue or reissue of this Certificate.

19.3 This Certificate will remain valid for an unlimited period provided that the product/system and its manufacture and/or fabrication, including all related and relevant parts and processes thereof:

- are maintained at or above the levels which have been assessed and found to be satisfactory by the BBA
- continue to be checked as and when deemed appropriate by the BBA under arrangements that it will determine
- are reviewed by the BBA as and when it considers appropriate.

19.4 The BBA has used due skill, care and diligence in preparing this Certificate, but no warranty is provided.

19.5 In issuing this Certificate the BBA is not responsible and is excluded from any liability to any company, firm, organisation or person, for any matters arising directly or indirectly from:

- the presence or absence of any patent, intellectual property or similar rights subsisting in the product/system or any other product/system
- the right of the Certificate holder to manufacture, supply, install, maintain or market the product/system
- actual installations of the product/system, including their nature, design, methods, performance, workmanship and maintenance
- any works and constructions in which the product/system is installed, including their nature, design, methods, performance, workmanship and maintenance
- any loss or damage, including personal injury, howsoever caused by the product/system, including its manufacture, supply, installation, use, maintenance and removal
- any claims by the manufacturer relating to CE marking.

19.6 Any information relating to the manufacture, supply, installation, use, maintenance and removal of this product/system which is contained or referred to in this Certificate is the minimum required to be met when the product/system is manufactured, supplied, installed, used, maintained and removed. It does not purport in any way to restate the requirements of the Health and Safety at Work etc. Act 1974, or of any other statutory, common law or other duty which may exist at the date of issue or reissue of this Certificate; nor is conformity with such information to be taken as satisfying the requirements of the 1974 Act or of any statutory, common law or other duty of care.